



**SPICER®**

*Off-Highway Products*

## Service Parts List

---

Transmission  
3018FHR24321-112  
4265397

TPL-1674  
October 2013

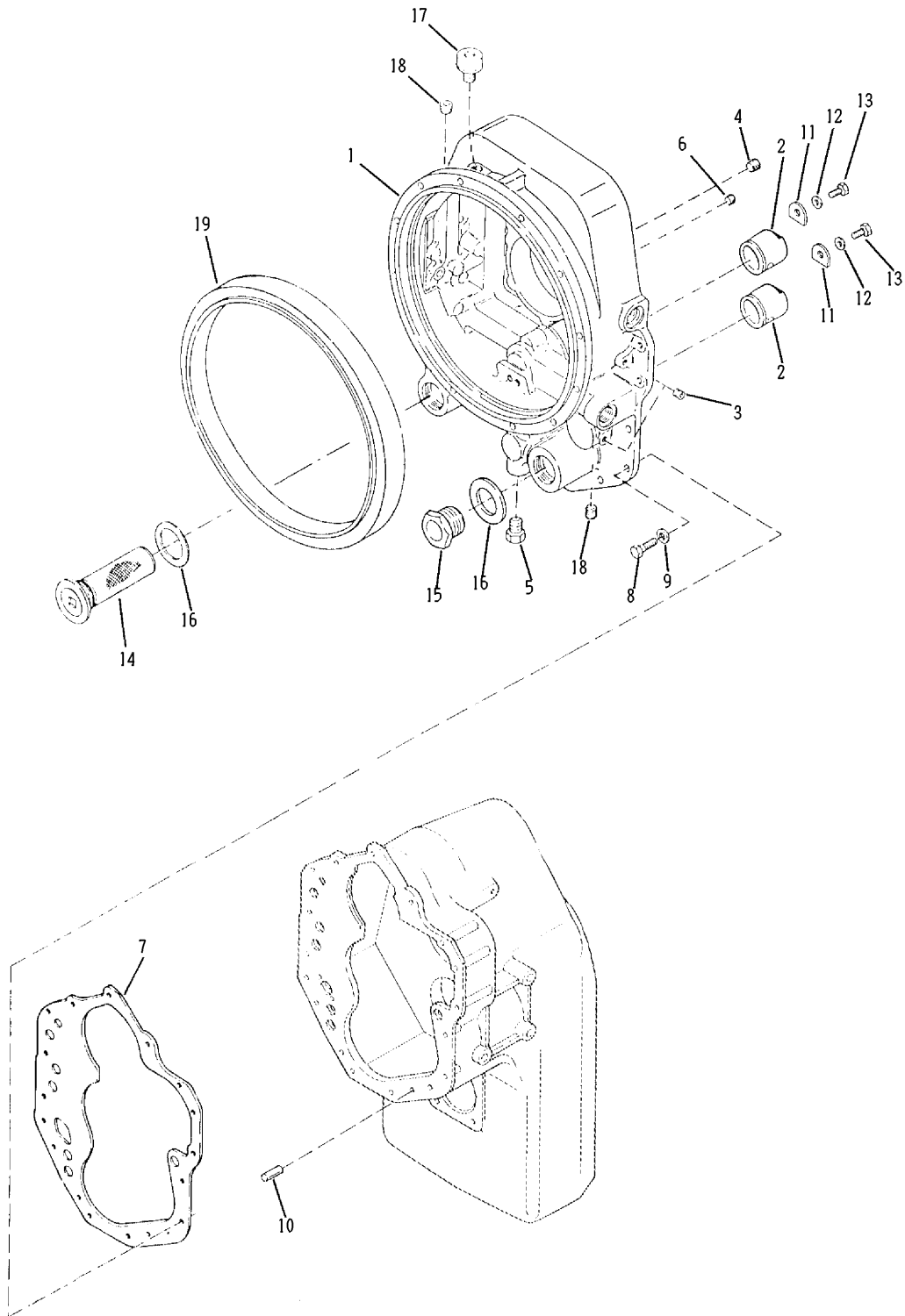
Date : 31-JAN-13  
Revised : A  
MODEL : 4265397

3018FHR24321-112  
ASSY-24000 TRANSMISSION FOR PAUS

<u>Item</u>	<u>Qty</u>	<u>Part Number</u>	<u>%</u>	<u>Description</u>	
1	2	4200051	E	FLANGE-OUTPUT GWB 387/40 flanges not shown - front and rear flange is the same partnumber 4200051	
	4	4210485		INTERFACE CABLE: DEUTSCH-AMP	N.I.
	1	4217546	C	GAUGE-CLUTCH PRESSURE	N.I.
	1	234033	C	GAUGE-TEMPERATURE	N.I.

N.S.S. - Not Sold Separately  
N.I. - Not Illustrated  
% - Part Stock Recommendation

# 24000 CONVERTER HOUSING GROUP



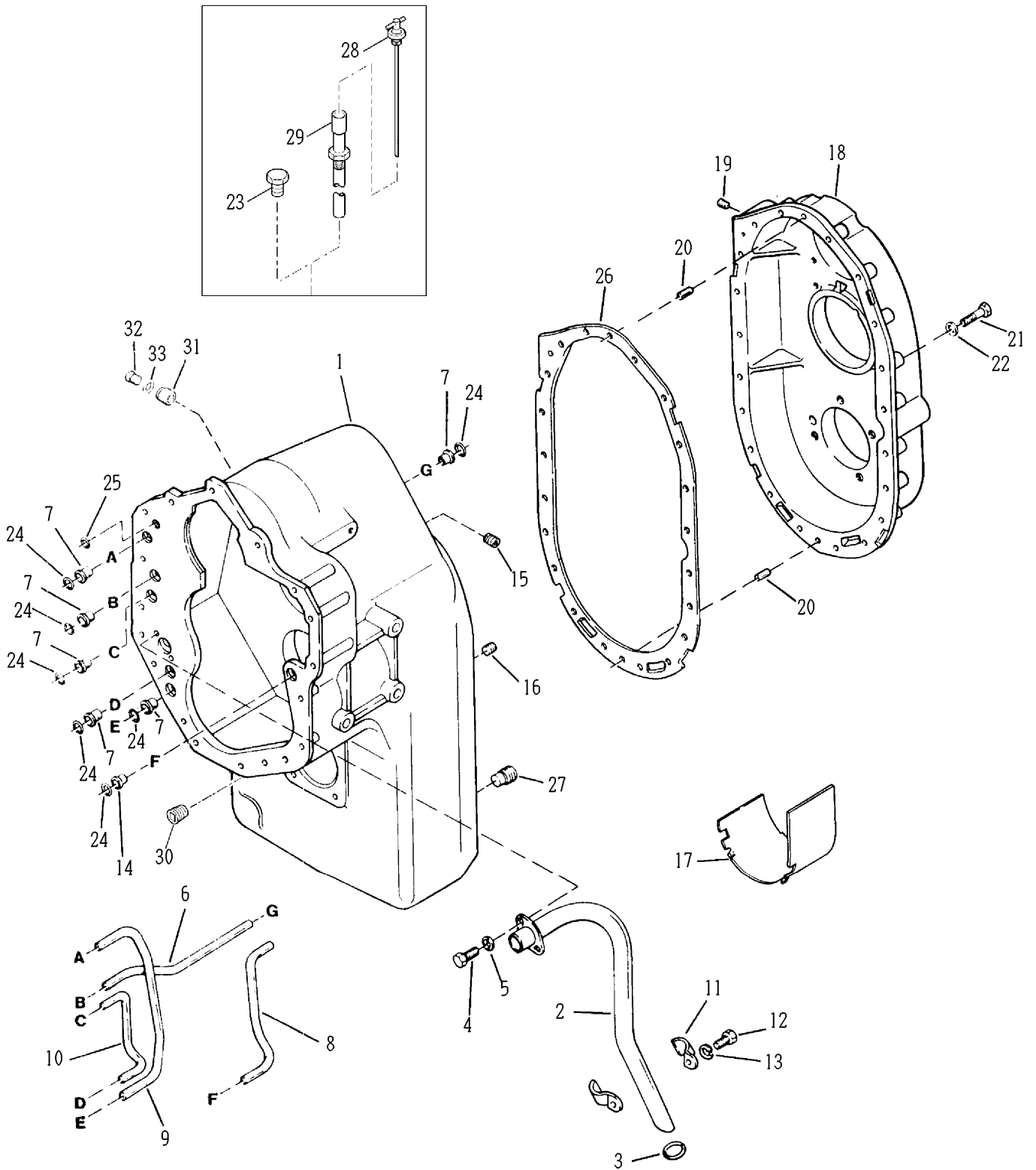
Date : 31-JAN-13  
 Revised : D  
 MODEL : 4500245

24000  
 GROUP-CONVERTER HOUSING

<u>Item</u>	<u>Qty</u>	<u>Part Number</u>	<u>%</u>	<u>Description</u>	
1	1	4204040	E	ASSY-CONVERTER HOUSING, TUBE AND PLUG	
2	2	248612	C	SLEEVE-CONVERTER HOUSING	
3	1	239243		PLUG-PIPE	
4	1	11F8		PLUG-PIPE	TEMP PICKUP
5	1	24K6		PLUG	
6	2	239244		PLUG-PIPE	
7	1	241279	B	GASKET-CONV HSG TO TRANS CASE	
8	17	17C720		SCREW-CONV HSG TO TRANS CASE	
9	17	4E7		LOCKWASHER-CONV HSG TO TRANS CASE SCREW	
10	1	214295	C	PIN-CONV HSG TO TRANS CASE DOWEL	
11	2	230851		CLIP-SLEEVE	
12	2	1C510		SCREW-SLEEVE CLIP	
13	2	4E5	E	LOCKWASHER-SLEEVE CLIP SCREW	
14	1	231390	D	ASSEMBLY-SCREEN	
15	1	219370		PLUG-CASE ASSEMBLY HOLE	
16	2	219373	B	GASKET-SCREEN ASSEMBLY	
17	1	238535	C	BREATHER-AIR	
18	2	47K5		PLUG-LUBE PRESSURE & CLUTCH PRESSURE	
19				Not Used On This Model	
	2	239245		PLUG	N.I.
	1	4201732		BUSHING-SPEED SENSOR	N.I.
	AR	248167	B	SHIM-WASHER	N.I.
	1	1KM18		PLUG-SENSOR PORT	N.I.
	1	60K30020	B	"O" RING-SPEED SENSOR PORT	N.I.

N.S.S. - Not Sold Separately  
 N.I. - Not Illustrated  
 % - Part Stock Recommendation

# 24000 TRANSMISSION CASE AND REAR COVER GROUP



Date : 31-JAN-13  
 Revised : C  
 MODEL : 4500356

24000  
 GROUP-TRANSMISSION CASE COVER

<u>Item</u>	<u>Qty</u>	<u>Part Number</u>	<u>%</u>	<u>Description</u>
1	1	4203275	E	ASSY-TRANSMISSION CASE-INCL.ITEMS 2 THRU 14
2	1	4218064		ASSY-SUCTION TUBE -PART OF ITEM 1
3	1	60K40104	B	O RING - PART OF ITEM 1
4	2	1C510		CAPSCREW - PART OF ITEM 1
5	2	4E5	E	LOCKWASHER - PART OF ITEM 1
6	1	242639		TUBE-LOW SPEED CLUTCH PRESSURE-PART OF ITEM 1
7	4	222067	E	SLEEVE-PRESS & LUBR.TUBE - PART OF ITEM 1
8	1	245163		TUBE LUBE - PART OF ITEM 1
9	1	241319	D	TUBE-3RD CLUTCH - PART OF ITEM 1
10				Not Used On This Model
11	2	4218065		CLIP-SUCTION TUBE -PART OF ITEM 1
12	1	1C616		CAPSCREW - PART OF ITEM 1
	1	8D7		NUT - PART OF ITEM 1 N.I.
13	1	4E6		LOCKWASHER - PART OF ITEM 1
14	1	221871		TUBE SLEEVE - PART OF ITEM 1
15	1	16F4		PLUG-PIPE
16	1	16F6		PLUG-PIPE
17	1	248613	D	BAFFLE-OIL
18	1	244384	E	ASSEMBLY-REAR COVER & PLUG-INCL.ITEM 19
19	1	239244		PLUG - PART OF ITEM 18
20	2	214295	C	PIN-TRANSMISSION CASE TO REAR COVER DOWEL
21	18	17C724		SCREW-REAR COVER TO CASE
21A	2	17C732		SCREW-REAR COVER TO CASE
22	20	4E7		LOCKWASHER-REAR COVER TO CASE
23				Not Used On This Model

N.S.S. - Not Sold Separately  
 N.I. - Not Illustrated  
 % - Part Stock Recommendation

Date : 31-JAN-13  
Revised : C  
MODEL : 4500356

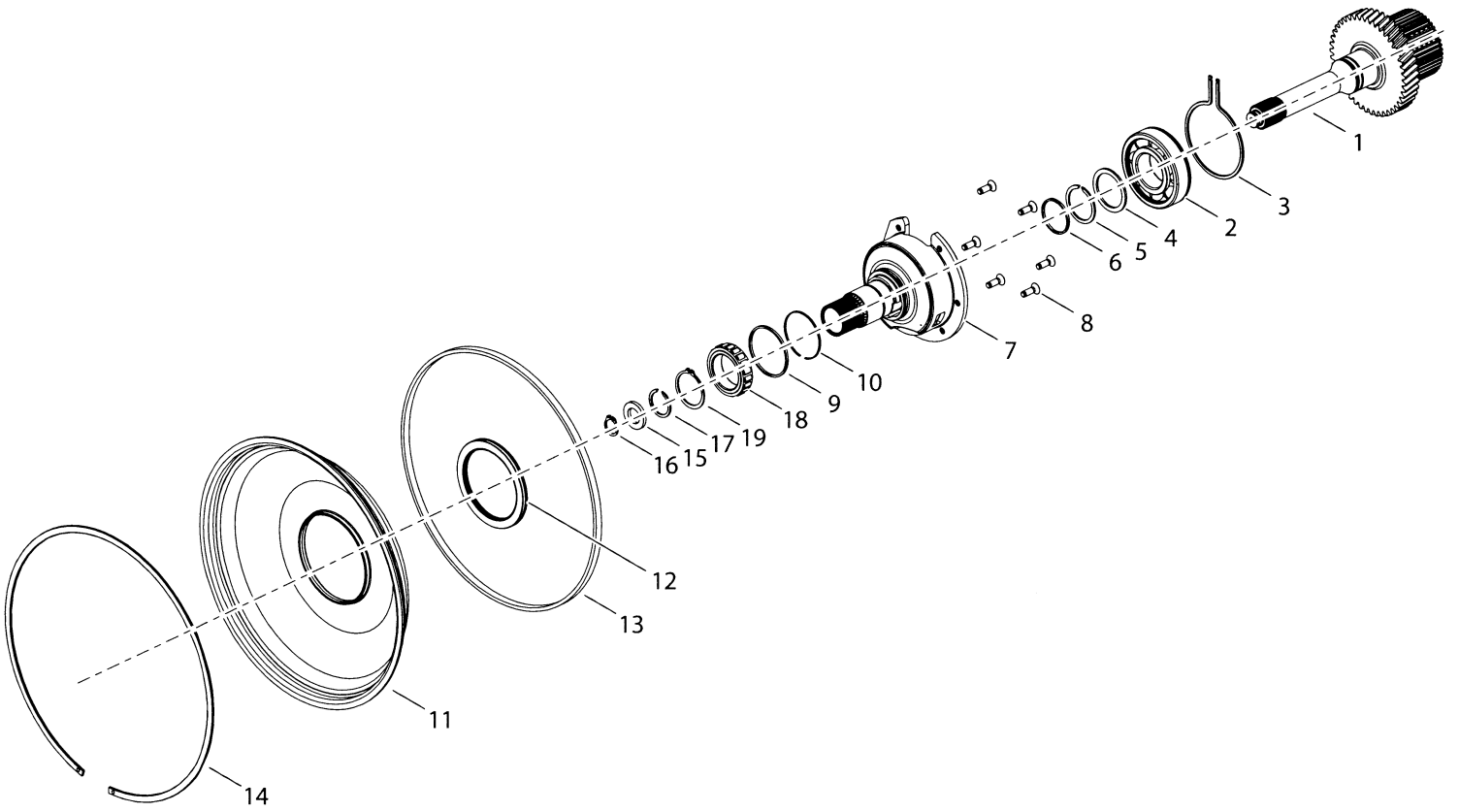
24000  
GROUP-TRANSMISSION CASE COVER

<u>Item</u>	<u>Qty</u>	<u>Part Number</u>	<u>%</u>	<u>Description</u>
24	5	60K40026	B	"O" RING-CLUTCH PRESSURE TUBE
25	1	60K30018	B	"O" RING-CLUTCH PRESSURE
26	1	236646	B	GASKET-REAR COVER TO TRANSMISSION CASE
27	2	215757		PLUG-MAGNETIC DRAIN
28	1	242603	C	DIPSTICK
29	1	236669	D	ASSEMBLY-DIPSTICK TUBE
30	1	11F16		PLUG-DRAIN BACK HOLE
31	1	248166	E	BUSHING-SPEED SENSOR
31A		248167	B	SHIM-WASHER
32	1	1KM18		PLUG-SPEED SENSOR PORT
33	1	60K30020	B	"O"RING-SPEED SENSOR PORT

N.S.S. - Not Sold Separately  
N.I. - Not Illustrated  
% - Part Stock Recommendation

# 24000

## GROUP-TURBINE SHAFT





Date : 31-JAN-13  
Revised :  
MODEL : 4506226

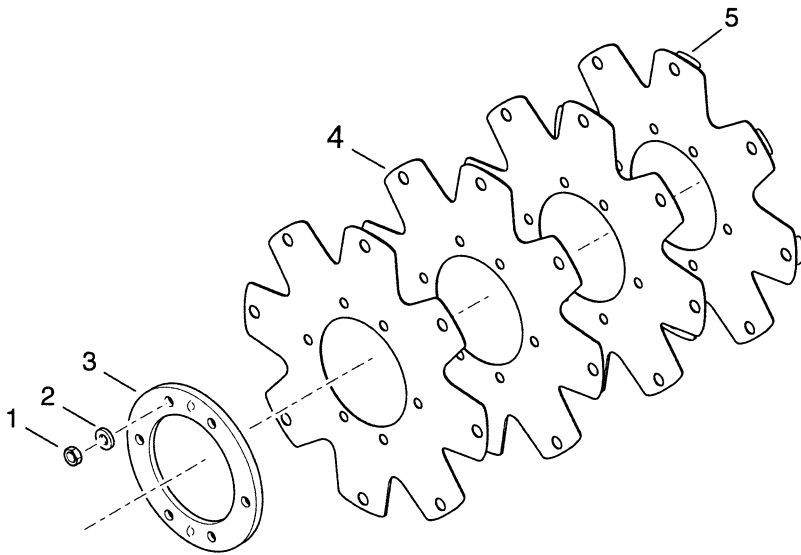
24000  
GROUP-TURBINE SHAFT, STATOR SUPPORT

<u>Item</u>	<u>Qty</u>	<u>Part Number</u>	<u>%</u>	<u>Description</u>
1	1	4215821	E	ASSY-TURBINE SHAFT HUB
2	1	4205105	C	BEARING-BALL
3	1	234229	C	SNAP RING EXTERNAL-SPECIAL
4	1	234230	D	WASHER-BEARING SUPPORT
5	1	231776	C	BEARING RETAINING RING
6	1	223085	C	PISTON RING
7	1	4214540	E	SUPPORT-STATOR
8	6	241308		SCREW-STATOR SUPPORT
9	1	4218642	B	RING-PISTON
10				Not Used On This Model
11	1	242831	E	ASSY-OIL BAFFLE - INCLUDING ITEM 12
12	1	4204710	B	SEAL-OIL - PART OF ITEM 11
13	1	241237	B	RING-OIL BAFFLE SEAL
14	1	245787	D	RING-OIL BAFFLE RETAINING
15	1	4214941	D	SPACER-TURBINE
16	1	6JM22	D	RING-SNAP
17	1	234908	C	RING-SNAP
18	1	242997	C	BEARING-IMPELLER HUB
19	1	5JM50	C	RING-SNAP

N.S.S. - Not Sold Separately  
N.I. - Not Illustrated  
% - Part Stock Recommendation

# TE10/24000

## DRIVE PLATE GROUP



Date : 31-JAN-13  
Revised :  
MODEL : 4506771

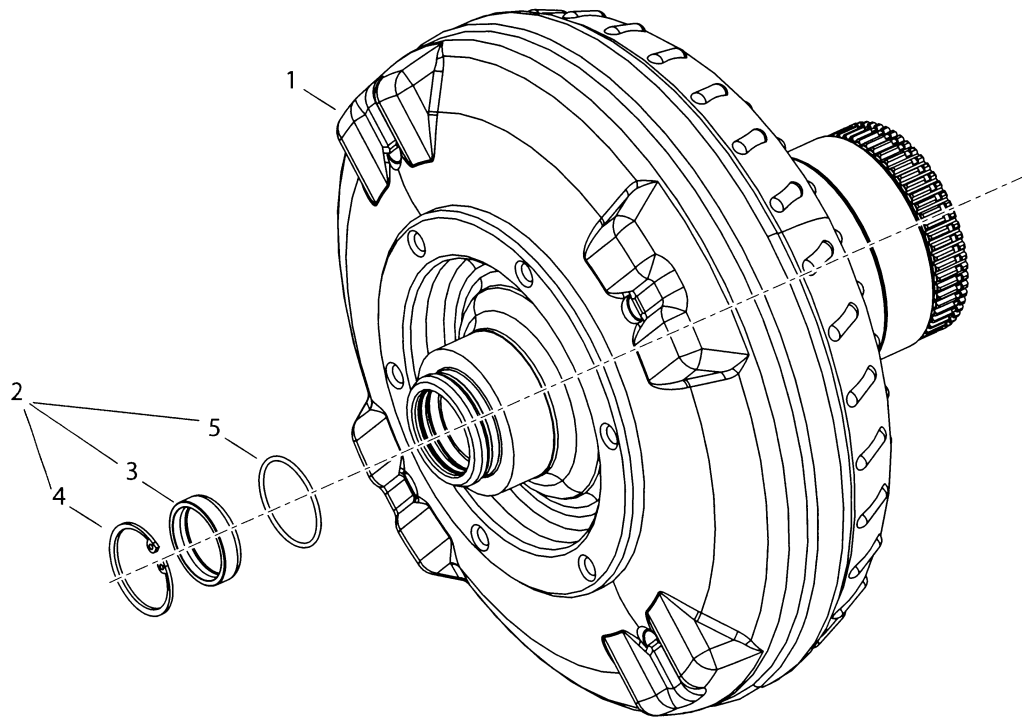
24000  
GROUP-DRIVE PLATE

<u>Item</u>	<u>Qty</u>	<u>Part Number</u>	<u>%</u>	<u>Description</u>
1	6	2C610 Not as illustrated	E	CAPSCREW
2	6	4E6		LOCKWASHER
3	1	246615	B	RING-BACKING
4	5	N.S.S.		PLATE-DRIVE - INCLUDING IN ITEM 5
5	1	8100391	E	KIT-DRIVE PLATE - INCL.ITEMS 1 THRU 4

N.S.S. - Not Sold Separately  
N.I. - Not Illustrated  
% - Part Stock Recommendation

# 24000

## GROUP-TORQUE CONVERTER



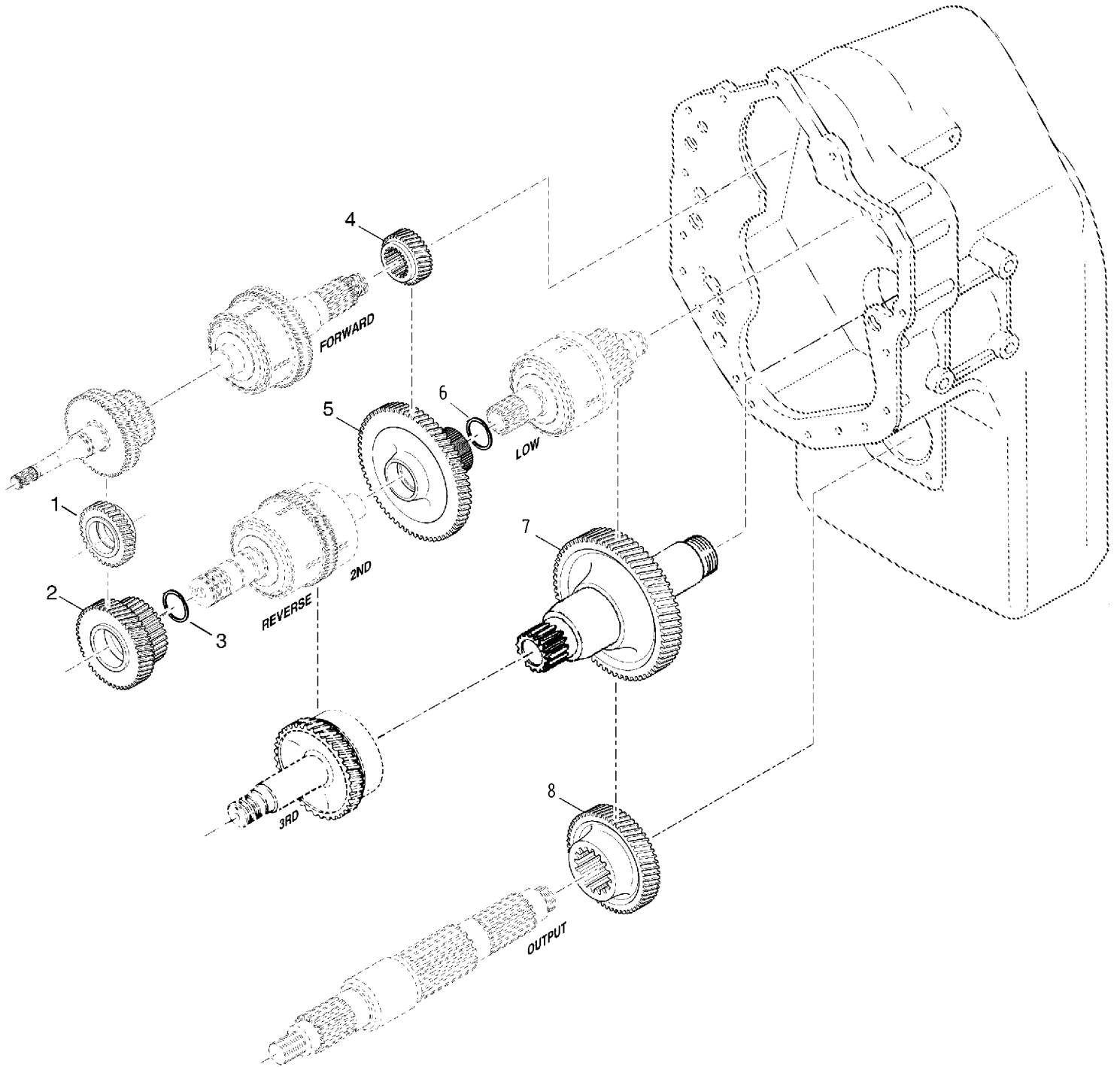
Date : 31-JAN-13  
Revised :  
MODEL : 4506306

24000  
GROUP-TORQUE CONVERTER ASSY

<u>Item</u>	<u>Qty</u>	<u>Part Number</u>	<u>%</u>	<u>Description</u>
1	1	4216002	E	TORQUE CONVERTER 3018F
2	1	4215348		KIT-TORQUE CONVERTER PLUG Including items 3 thru 5
3	1	4214943		PLUG-TORQUE CONVERTER - PART OF ITEM 2
4	1	4215353	D	SNAP RING - PART OF ITEM 2
5	1	4215354	B	O RING - PART OF ITEM 2

N.S.S. - Not Sold Separately  
N.I. - Not Illustrated  
% - Part Stock Recommendation

# 24000 GROUP - GEAR



Date : 31-JAN-13  
Revised : D  
MODEL : 265523

24000  
GROUP-GEAR

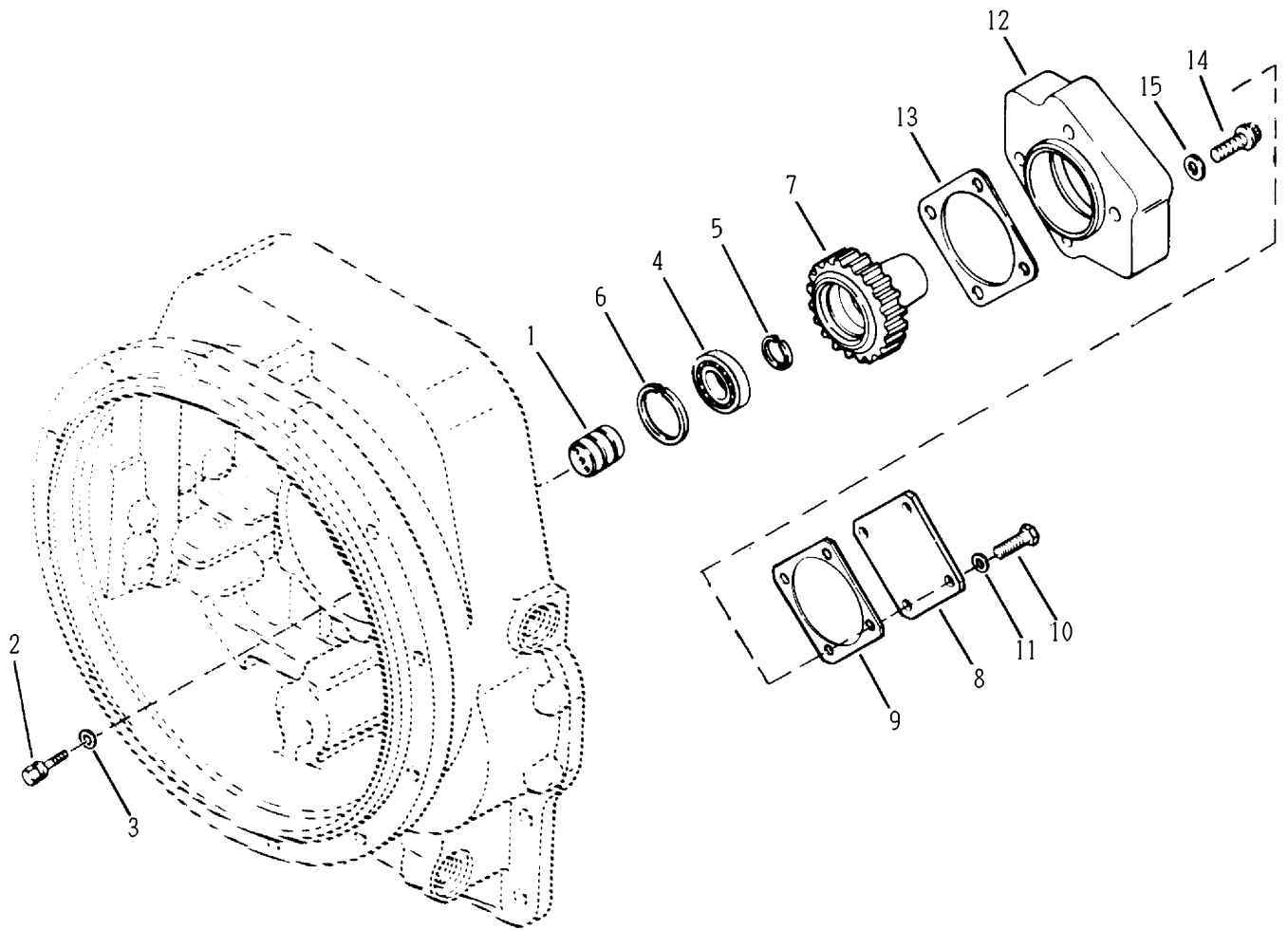
<u>Item</u>	<u>Qty</u>	<u>Part Number</u>	<u>%</u>	<u>Description</u>	
1	1	247704	D	GEAR-REVERSE IDLER	32T
2	1	4207993	C	GEAR-REVERSE CLUTCH	43T
3				Not Used On This Model	
4	1	242649	D	GEAR-FORWARD SHAFT	29T
5	1	4208017	C	GEAR-LOW CLUTCH	63T
6				Not Used On This Model	
7	1	244450	C	SHAFT-IDLER	51T
8	1	243875	C	GEAR-OUTPUT SHAFT	41T

N.S.S. - Not Sold Separately  
N.I. - Not Illustrated  
% - Part Stock Recommendation

# 24000

## AUXILIARY PUMP DRIVE GROUP

### WITH ADAPTOR





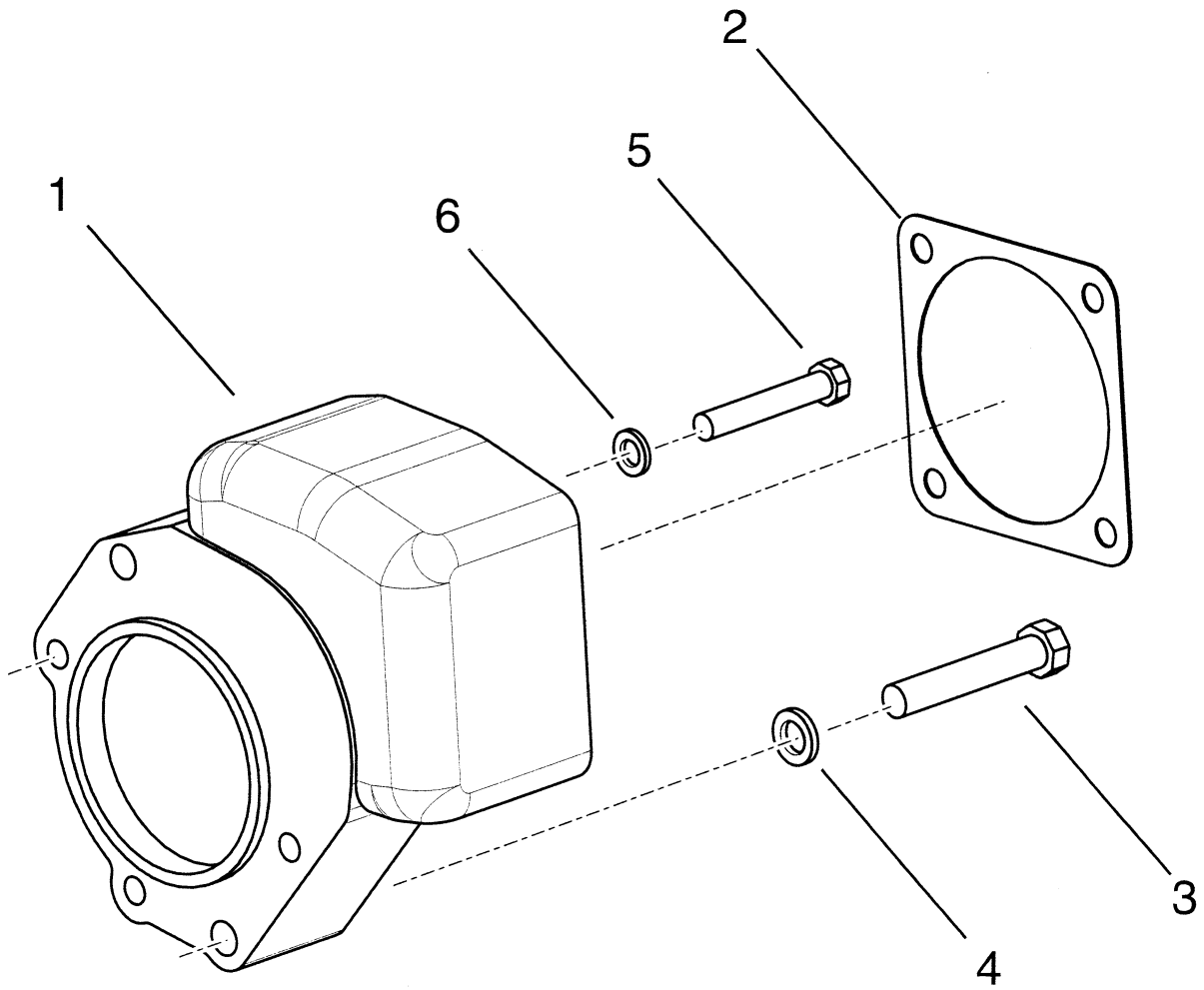
Date : 31-JAN-13  
Revised : A  
MODEL : 4500631

18000  
GROUP-PUMP DRIVE

<u>Item</u>	<u>Qty</u>	<u>Part Number</u>	<u>%</u>	<u>Description</u>
1	1	234327	D	SUPPORT-PUMP DRIVE BEARING
2	2	1C620		SCREW-BEARING SUPPORT
3	2	4E6		LOCKWASHER-BEARING SUPPORT
4	1	238222	C	BEARING-PUMP DRIVE GEAR 207M
5	1	234908	C	RING-DRIVE GEAR BEARING LOCATING
6	1	223878	C	RING-DRIVE GEAR BEARING RETAINING
7	1	243853		GEAR-PUMP DRIVE 36T-10P 14T-12/24P
8				Not Used On This Model
9				Not Used On This Model
10				Not Used On This Model
11				Not Used On This Model
12	1	243852		ADAPTOR-"B" TO "C" MOUNTING
13	1	243915	B	GASKET-ADAPTOR TO CONVERTER
14	4	73G824		SCREW
15	4	22E8		LOCKWASHER-ADAPTOR TO CONVERTER SCREW

N.S.S. - Not Sold Separately  
N.I. - Not Illustrated  
% - Part Stock Recommendation

# T20000 GROUP OFFSET PUMP DRIVE



Date : 31-JAN-13  
Revised : B  
MODEL : 4224615

18000  
GROUP-OFFSET PUMP DRIVE ASSY.

<u>Item</u>	<u>Qty</u>	<u>Part Number</u>	<u>%</u>	<u>Description</u>	
1	1	247116		ASSEMBLY-PUMP DRIVE	
2	1	245699	B	GASKET	
3	2	1C1056		SCREW-PUMP ADAPTOR HOUSING MOUNTING	
4	2	4E10		LOCKWASHER-PUMP ADAPTOR HOUSING SCREW	
5	3	1C848		SCREW-PUMP ADAPTOR HOUSING MOUNTING	
6	3	4E8		LOCKWASHER-PUMP ADAPTOR HSG SCREW	
	1	4202423		FITTING	N.I.
	1	4202424		LUBE-TUBE	N.I.
	1	89F3		FITTING	N.I.
	1	19F1		REDUCING-BUSHING	N.I.

N.S.S. - Not Sold Separately  
N.I. - Not Illustrated  
% - Part Stock Recommendation



Date : 31-JAN-13  
Revised :  
MODEL : 247116

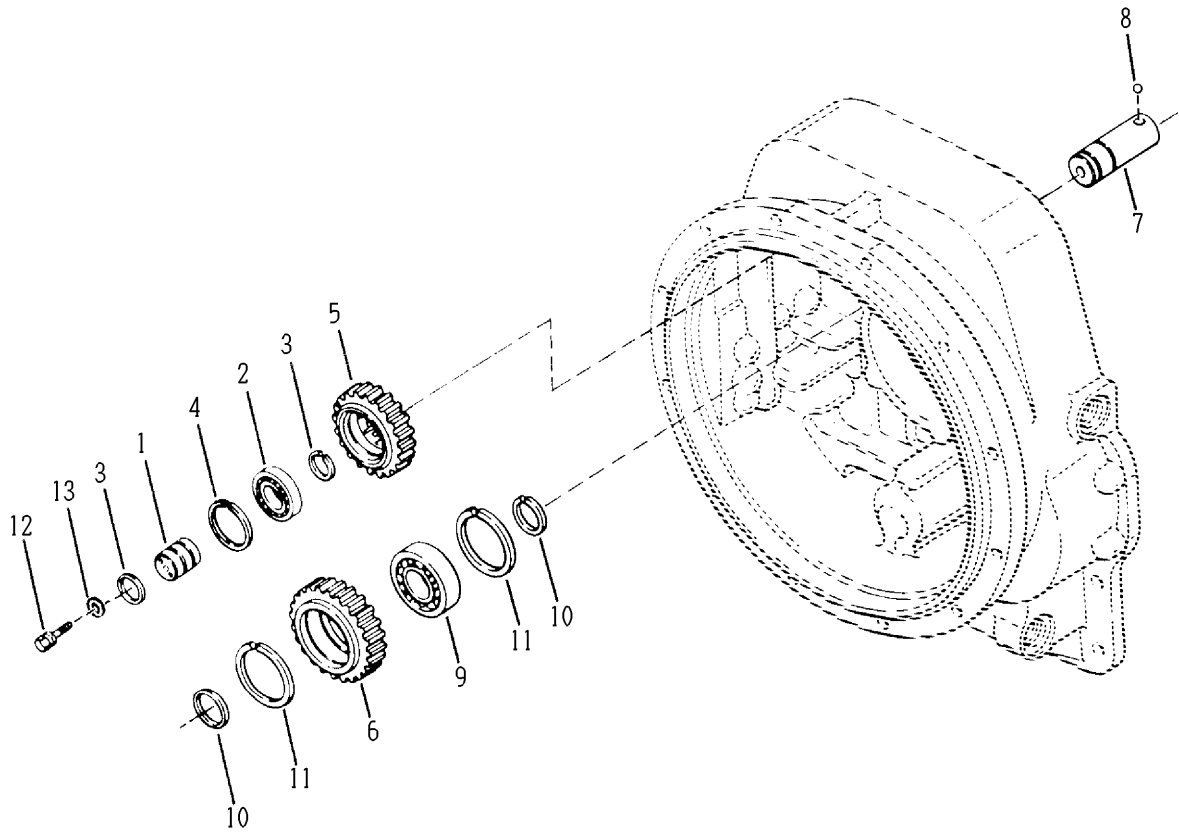
C5000/18000  
ASSY-PUMP DRIVE

<u>Item</u>	<u>Qty</u>	<u>Part Number</u>	<u>%</u>	<u>Description</u>
1	1	4212260	E	PUMP ADAPTOR HOUSING
2	2	233227	D	GEAR-PUMP DRIVE 34T
3	2	233228	E	SUPPORT-PUMP DRIVE BEARING
4	2	658019	C	BEARING-PUMP DRIVE
5	2	223881	C	RING-BEARING RETAINING
6	1	233719	E	BAFFLE-OIL
7	4	2C616		SCREW-BEARING SUPPORT
8	4	248787	C	WASHER-BRG SUPPORT SCREW
9	1	233229		SHAFT-PUMP DRIVE
10	1	224039	E	SNAP RING
11	1	40K4		PLUG-PIPE

N.S.S. - Not Sold Separately  
N.I. - Not Illustrated  
% - Part Stock Recommendation

24000

# CHARGING PUMP DRIVE GROUP



GRP-24-81 rev. 220402

Date : 31-JAN-13  
Revised :  
MODEL : 4501674

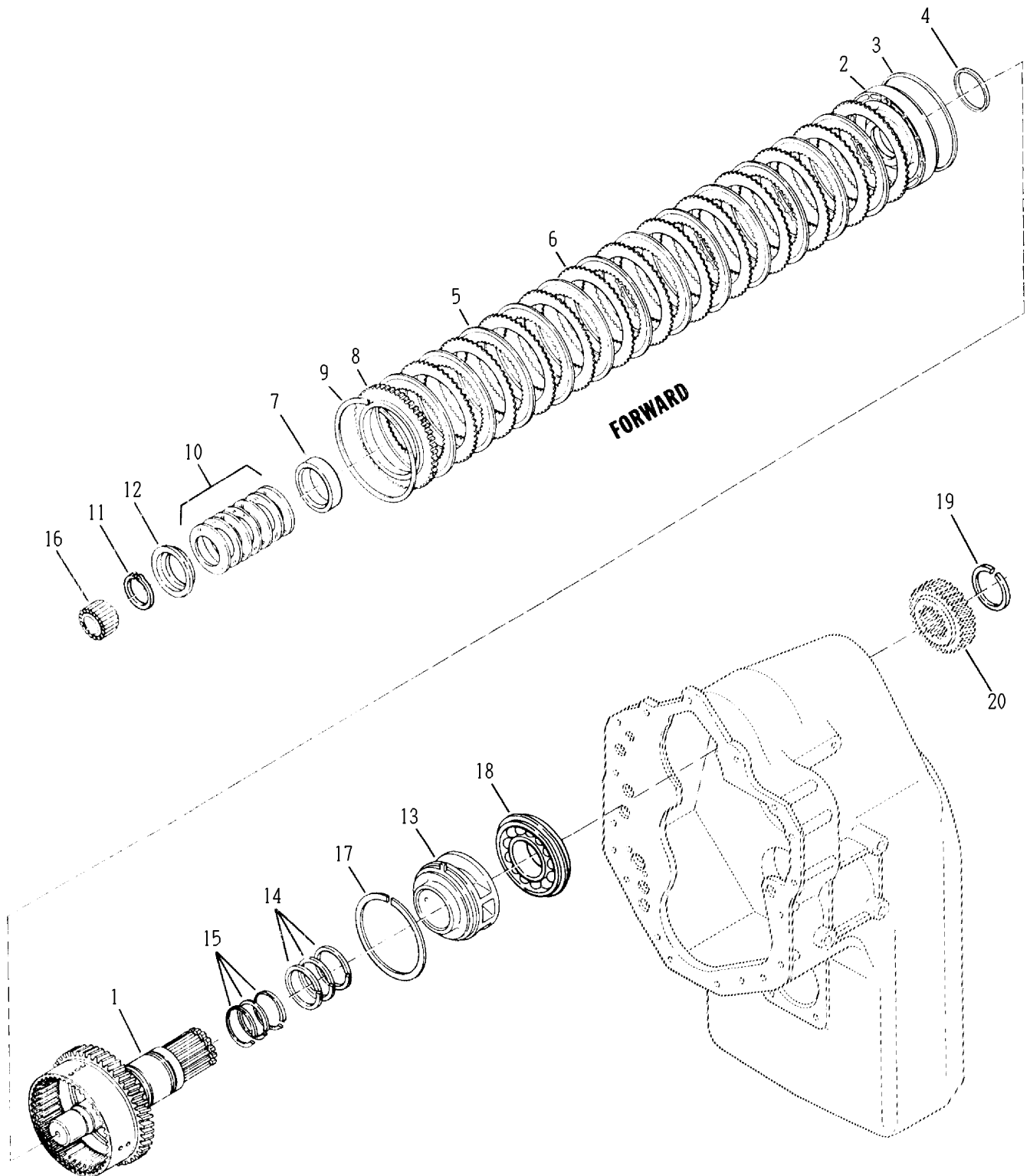
18/24000  
GROUP-CHARGING PUMP DRIVE PARTS

<u>Item</u>	<u>Qty</u>	<u>Part Number</u>	<u>%</u>	<u>Description</u>	
1	1	234327	D	SUPPORT-PUMP DRIVE BEARING	
2	1	238222	C	BEARING-PUMP DRIVE GEAR	207-M
3	1	234908	C	RING-DRIVE GEAR BEARING LOCATING	
4	1	223878	C	RING-DRIVE GEAR BEARING RET	
5	1	249147	D	GEAR-PUMP DRIVE	36T-10P
6	1	238211	D	GEAR-PUMP DRIVE IDLER	40T-10P
7	1	238215	D	SHAFT-IDLER GEAR STUB	
8	1	10J8		BALL-IDLER SHAFT LOCK	
9	1	238223	C	BEARING-IDLER GEAR STUB SHAFT	307M
10	2	234908	C	RING-IDLER GEAR BEARING LOCATING	
11	2	223964	C	RING-IDLER GEAR BEARING RET	
12	2	1C620		SCREW-BEARING SUPPORT	
13	2	4E6		LOCKWASHER-BEARING SUPPORT	
	1	4205967		SPACER-PUMP DRIVE	N.I.

N.S.S. - Not Sold Separately  
N.I. - Not Illustrated  
% - Part Stock Recommendation

# 24000

## FORWARD SHAFT GROUP





Date : 01-OCT-13  
Revised : G  
MODEL : 265803

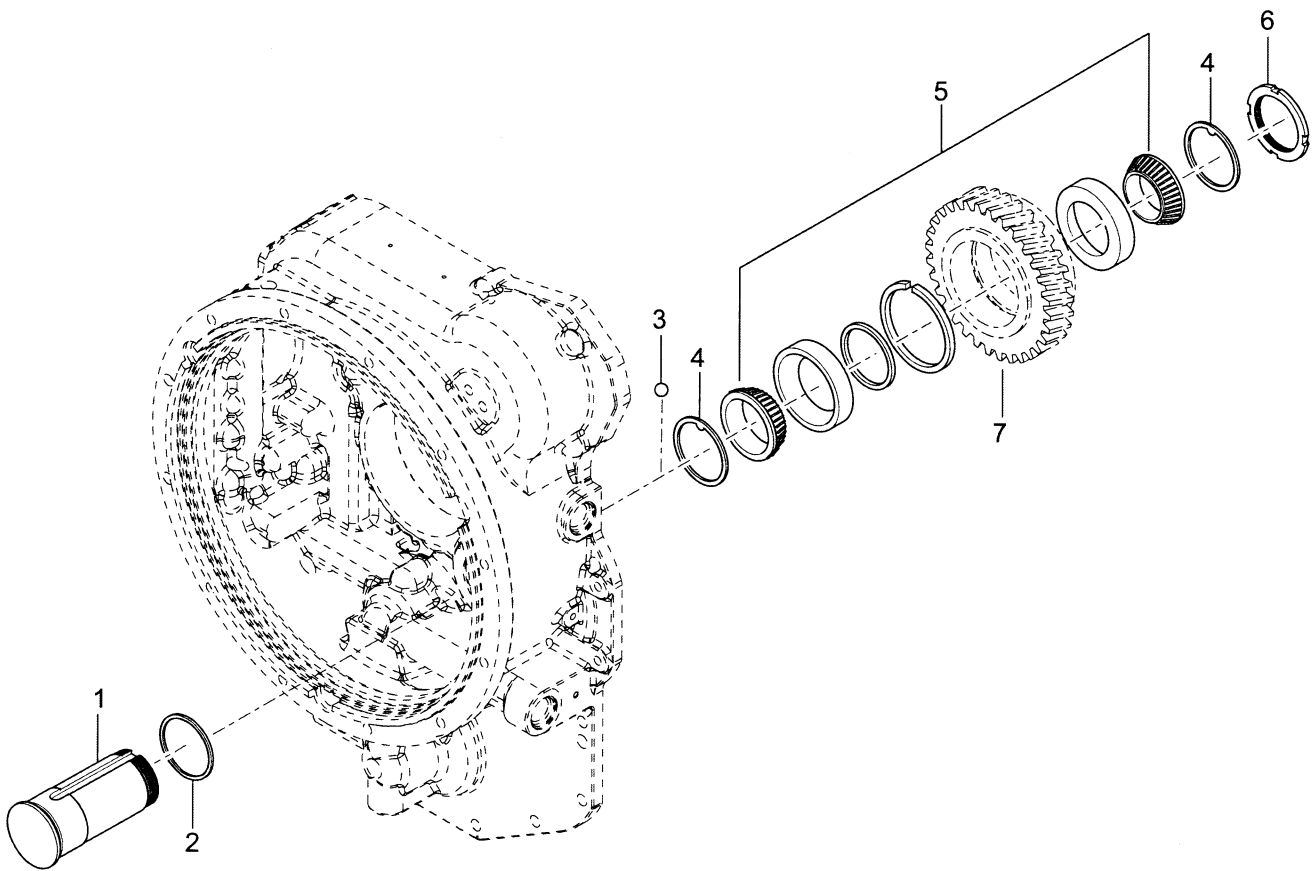
24000  
GROUP-FORWARD SHAFT

<u>Item</u>	<u>Qty</u>	<u>Part Number</u>	<u>%</u>	<u>Description</u>
1	1	242673	E	ASSY-FORWARD SHAFT, DRUM & PLUG
2	1	4204050	D	ASSY-CLUTCH PISTON AND SEALS-INCL.ITEMS 3 & 4
3	1	237032	B	SEAL-CLUTCH PISTON - OUTER - PART OF ITEM 2
4	1	234113	B	SEAL-CLUTCH PISTON - INNER - PART OF ITEM 2
5	12	237016	C	DISC-CLUTCH INNER
6	12	234109	C	DISC-CLUTCH OUTER
7	1	237442		SPACER-PISTON RETURN SPRING
8	1	242650	E	PLATE-CLUTCH DISC BACKING
9	1	234111	C	SNAP RING-BACKING PLATE
10	1	247657		ASSY-DISC SPRING - INCL. 7 WASHERS
11	1	234350	D	RING-RETAINING
12	1	241313		RETAINER-SPRING
13	1	241037	B	SLEEVE-PISTON RING
14	3	4207676	B	RING-PISTON
15				Not Used On This Model
16	1	235763	C	BEARING-FORWARD SHAFT PILOT
17	1	235764	D	RING-PISTON RING SLEEVE RETAINING
18	1	241819	D	BEARING-FORWARD SHAFT REAR
19	1	238034	D	RING-GEAR RETAINING
20				FORWARD SHAFT GEAR - SEE GEAR GROUP

N.S.S. - Not Sold Separately  
N.I. - Not Illustrated  
% - Part Stock Recommendation

# TE10/24000

## REVERSE IDLER GROUP



Date : 31-JAN-13  
Revised :  
MODEL : 265225

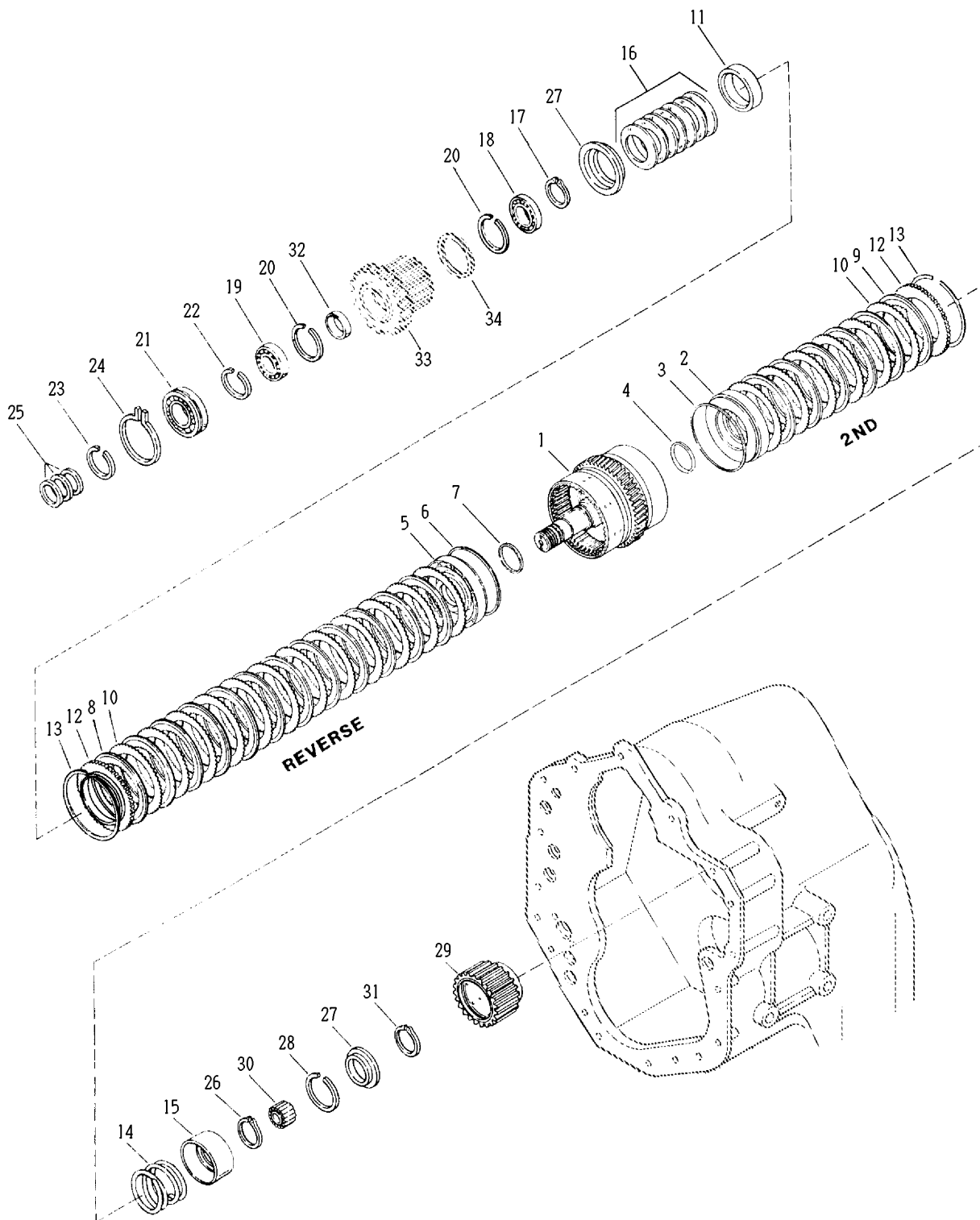
24000  
GROUP-REVERSE IDLER

<u>Item</u>	<u>Qty</u>	<u>Part Number</u>	<u>%</u>	<u>Description</u>
1	1	242872	D	SHAFT-REVERSE IDLER
2	1	76K223	B	"O" RING-IDLER SHAFT
3	1	10J10		BALL
4	2	238911		WASHER TANGED
5	1	247664	C	ASSY-BEARING
6	1	201700		NUT-BEARING RETAINING PLATE
7				GEAR-REVERSE IDLER - SEE GEAR GROUP

N.S.S. - Not Sold Separately  
N.I. - Not Illustrated  
% - Part Stock Recommendation

24000

REVERSE & 2ND SHAFT GROUP - 3 SPEED



Date : 31-JAN-13  
Revised : N  
MODEL : 265804

24000  
GROUP-REVERSE 2ND SHAFT

<u>Item</u>	<u>Qty</u>	<u>Part Number</u>	<u>%</u>	<u>Description</u>
1	1	246220	E	ASSY-REVERSE & 2ND SHAFT, DRUM & PLUG
2	1	4207175	B	ASSY-CL PISTON,BALL SEAT&SEALS-INCL.ITEMS 3&4
3	1	237032	B	SEAL-CLUTCH PISTON - OUTER - PART OF ITEM 2
4	1	234113	B	SEAL-CLUTCH PISTON - INNER - PART OF ITEM 2
5	1	4204050	D	ASSY-CLUTCH PISTON & SEALS-INCL.ITEMS 6 & 7
6	1	237032	B	SEAL-CLUTCH PISTON - OUTER - PART OF ITEM 5
7	1	234113	B	SEAL-CLUTCH PISTON - INNER - PART OF ITEM 5
8	12	237016	C	DISC-CLUTCH INNER
9	6	237016	C	DISC-CLUTCH INNER
10	18	234109	C	DISC-CLUTCH OUTER
11	1	237442		SPACER-PISTON RETURN
12	2	242650	E	PLATE-CLUTCH DISC BACKING
13	2	234111	C	SNAP RING-BACKING PLATE
14	1	235960	D	SPRING-PISTON RETURN 2ND CLUTCH
15	1	235959	E	RETAINER-SPRING 2ND CLUTCH
16	1	247657		ASSEMBLY-DISC SPRING - INCLUDING 7 WASHERS
17	1	234350	D	SNAP RING-SPRING RETAINER 2ND CLUTCH
18	1	230829	C	BEARING-CLUTCH DRIVEN GEAR
19	1	233389	C	BEARING-CLUTCH DRIVEN GEAR
20	2	234141	D	SNAP RING-CLUTCH GEAR BEARING
21	1	241606	C	BRG-REVERSE & 2ND SHAFT FRONT
22	1	247949	D	SNAP RING-FRONT BEARING REAR
23	1	246238	C	SNAP RING-FRONT BRG FRONT
24	1	230889	D	SNAP RING-FRONT BEARING
25	3	4208098	B	PISTON-RING

N.S.S. - Not Sold Separately  
N.I. - Not Illustrated  
% - Part Stock Recommendation

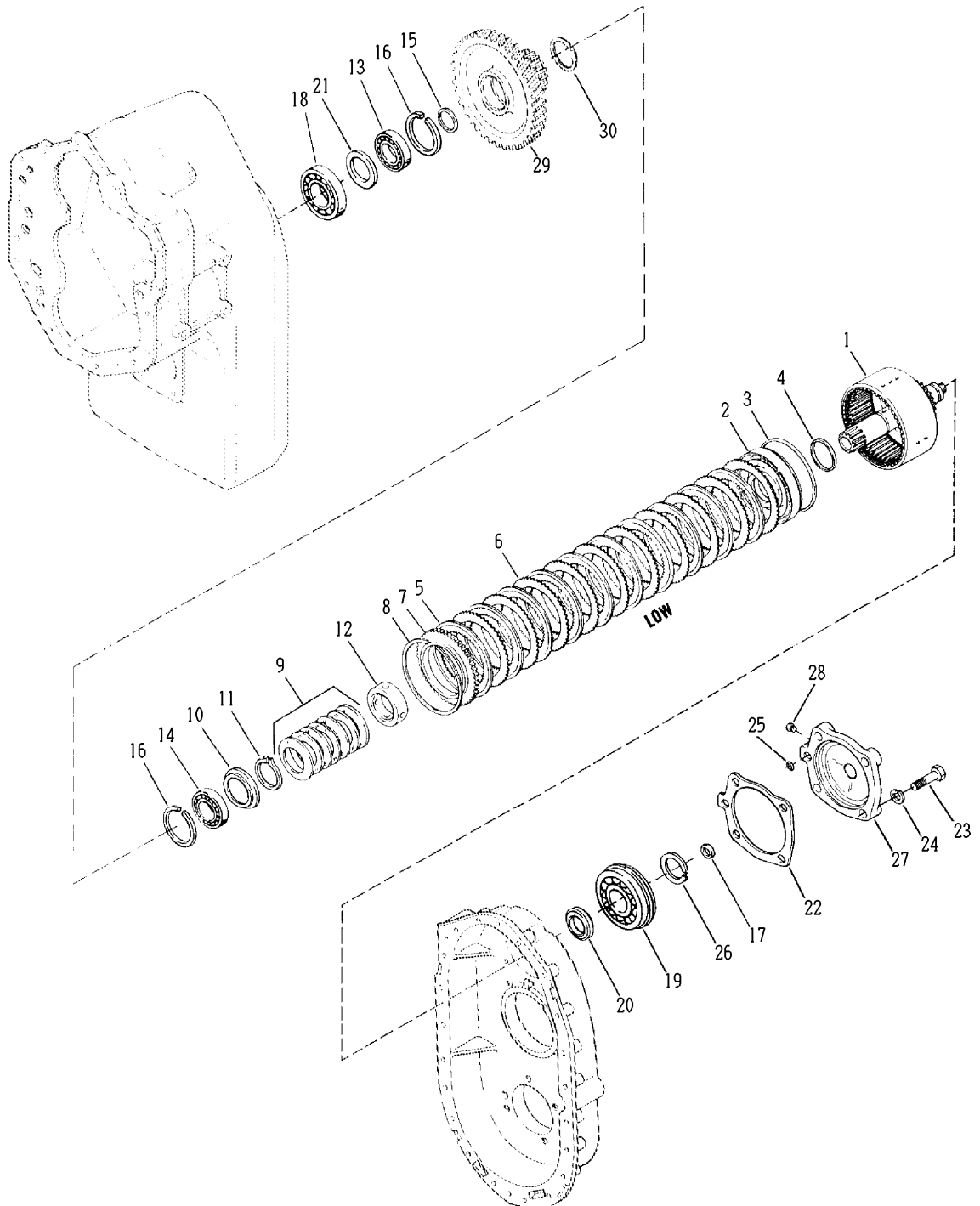
Date : 31-JAN-13  
Revised : N  
MODEL : 265804

24000  
GROUP-REVERSE 2ND SHAFT

<u>Item</u>	<u>Qty</u>	<u>Part Number</u>	<u>%</u>	<u>Description</u>
26	1	234350	D	SNAP RING-SPRING RETAINER
27	2	241313		RETAINER
28	1	241603	C	SNAP RING-RETAINER
29	1	4203200	D	HUB-2ND CLUTCH
30	1	233065	C	BEARING-REV. & 2ND SHAFT REAR
31	1	234350	D	SNAP RING-2ND CLUTCH DISC HUB
32	1	234304	D	SPACER-CLUTCH DRIVEN GEAR BEARING
33				REV CLUTCH GEAR & HUB ASSY - SEE GEAR GROUP
34				RETAINING RING - SEE GEAR GROUP

N.S.S. - Not Sold Separately  
N.I. - Not Illustrated  
% - Part Stock Recommendation

**24000**  
**LOW SHAFT GROUP**



Date : 31-JAN-13  
Revised : G  
MODEL : 265524

24000  
GROUP-LOW SPEED SHAFT

<u>Item</u>	<u>Qty</u>	<u>Part Number</u>	<u>%</u>	<u>Description</u>
1	1	243870	E	ASSY-LOW CLUTCH SHAFT DRUM & BLEED VALVE
2	1	4204050	D	ASSY-CLUTCH PISTON & SEALS-INCL.ITEMS 3 & 4
3	1	237032	B	SEAL-CLUTCH PISTON - OUTER - PART OF ITEM 2
4	1	234113	B	SEAL-CLUTCH PISTON - INNER - PART OF ITEM 2
5	10	234336	C	DISC-CLUTCH INNER
6	10	234109	C	DISC-CLUTCH OUTER
7	1	242650	E	PLATE-CLUTCH DISC BACKING
8	1	234111	C	RING-BACKING PLATE RETAINING
9	1	247659	D	ASSY-DISC SPRING - INCLUDING 7 WASHERS
10	1	248095		RETAINER-SPRING
11	1	234350	D	SNAP RING-SPRING RETAINER
12	1	242658		SPACER-PISTON RETURN SPRING
13	1	241818	C	BEARING-LOW SPEED GEAR
14	1	230885	C	BEARING-LOW SPEED GEAR
15	1	241259	D	SPACER-LOW SPEED GEAR BEARING
16	2	223881	C	RING-LOW SPEED GEAR BEARING LOCATING
17	1	250215	B	RING-LOW SHAFT PISTON
18	1	4205105	C	BEARING-BALL
19	1	4212867	C	BEARING-BALL
20	1	242690		SPACER-LOW SPEED CLUTCH SHAFT REAR BRG
21	1	234145	D	SPACER-FRONT BEARING
22	1	242685	B	GASKET-REAR BEARING CAP
23	4	1C720		SCREW-REAR BEARING CAP
24	4	4E7		LOCKWASHER-REAR BEARING CAP SCREW
25	1	60K30012	B	"O" RING-REAR BEARING CAP

N.S.S. - Not Sold Separately  
N.I. - Not Illustrated  
% - Part Stock Recommendation



Date : 31-JAN-13  
Revised : G  
MODEL : 265524

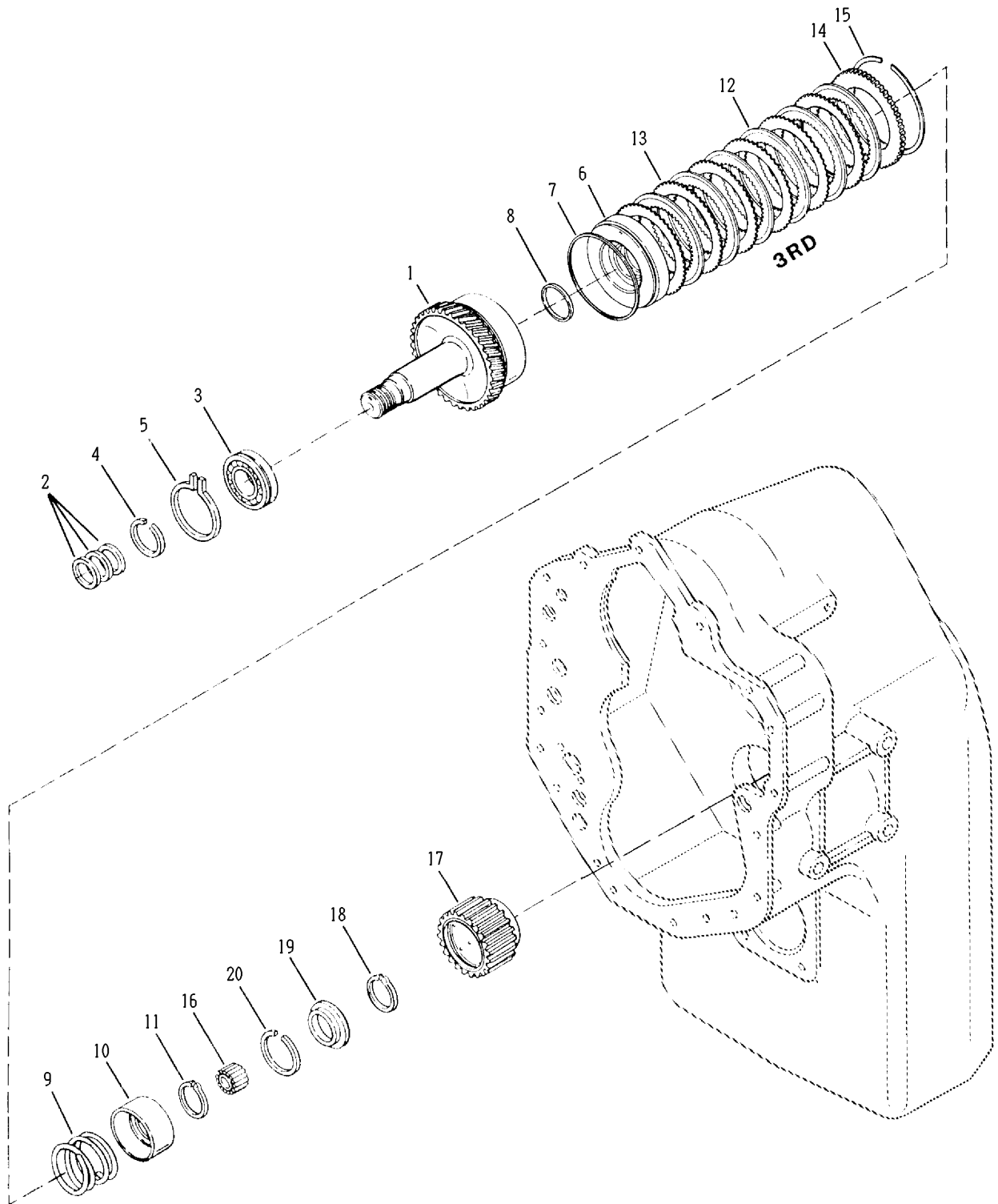
24000  
GROUP-LOW SPEED SHAFT

<u>Item</u>	<u>Qty</u>	<u>Part Number</u>	<u>%</u>	<u>Description</u>
26	1	232081	D	RING-REAR BEARING RETAINING
27	1	242686	E	ASSY-REAR BEARING CAP & PLUG-INCL.ITEM 28
28	1	24K2		PLUG - PART OF ITEM 29
29				ASSY-LOW GEAR HUB & RING - SEE GEAR GROUP
30				RETAINING RING - SEE GEAR GROUP

N.S.S. - Not Sold Separately  
N.I. - Not Illustrated  
% - Part Stock Recommendation

24000

3RD SHAFT CLUTCH GROUP



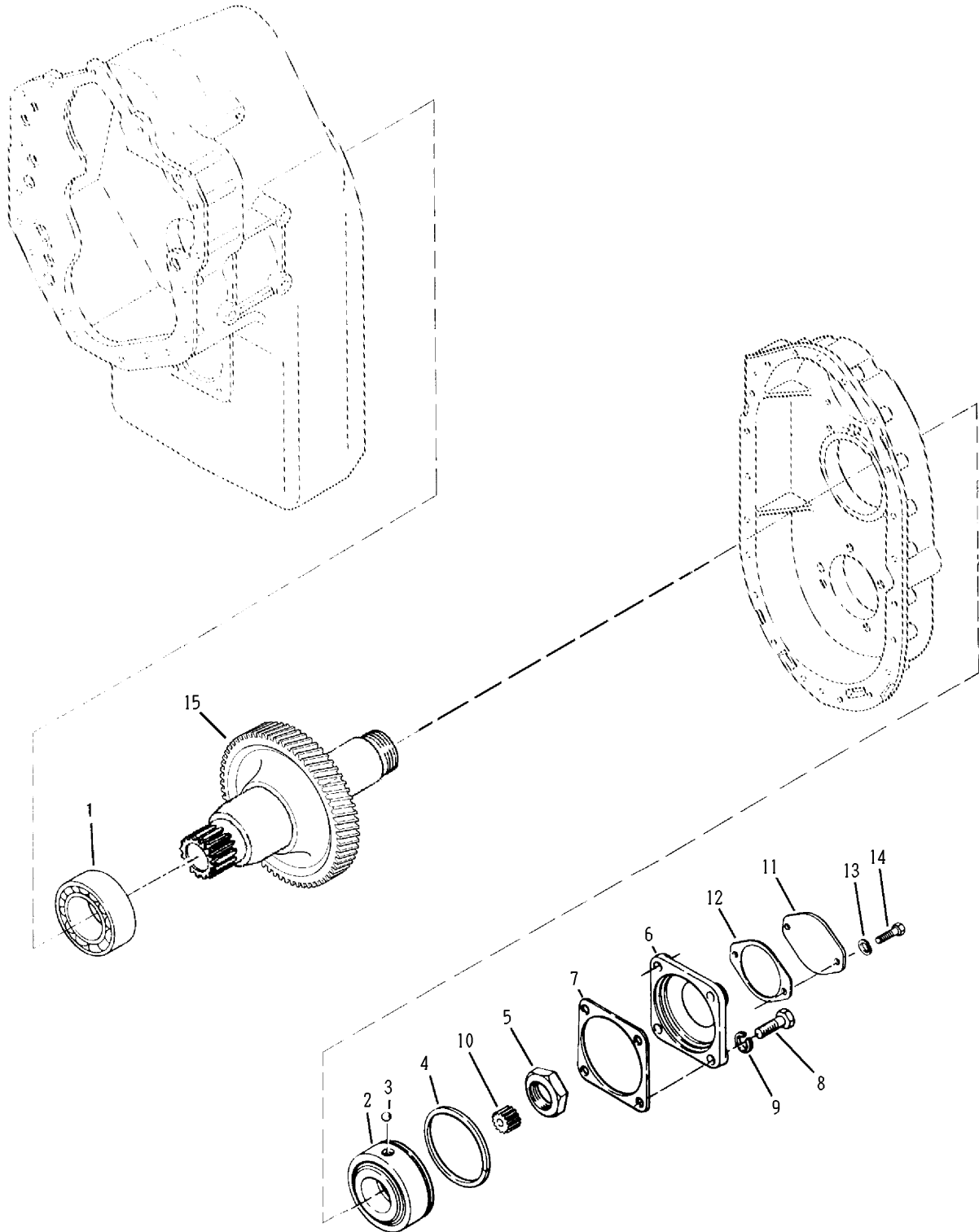
Date : 31-JAN-13  
Revised : M  
MODEL : 265228

24000  
GROUP-3RD SHAFT CLUTCH

<u>Item</u>	<u>Qty</u>	<u>Part Number</u>	<u>%</u>	<u>Description</u>
1	1	246242	E	ASSY-3RD SHAFT, DRUM & PLUG
2	2	4208098	B	PISTON-RING
3	1	241606	C	BEARING-3RD CLUTCH SHAFT FRONT
4	1	246238	C	SNAP RING-FRONT BRG NEXT TO PISTON RING GROOV
5	1	230889	D	SNAP RING-3RD CLUTCH SHAFT FRT BRG
6	1	4207175	B	ASSY-CL PISTON,BALL,SEAT&SEALS-INCL.ITEMS 7&8
7	1	237032	B	SEAL-CLUTCH PISTON - OUTER - PART OF ITEM 6
8	1	234113	B	SEAL-CLUTCH PISTON - INNER - PART OF ITEM 6
9	1	235960	D	SPRING-PISTON RETURN
10	1	235959	E	RETAINER-SPRING
11	1	234350	D	SNAP RING-SPRING RETAINER
12	6	237016	C	DISC-CLUTCH INNER
13	6	234109	C	DISC-CLUTCH OUTER
14	1	242650	E	PLATE-CLUTCH DISC BACKING
15	1	234111	C	SNAP RING-BACKING PLATE
16	1	233065	C	BEARING-3RD CLUTCH SHAFT PILOT
17	1	4203200	D	HUB-3RD CLUTCH
18	1	234350	D	SNAP RING-3RD CLUTCH DISCH HUB
19	1	241313		RETAINER
20	1	241603	C	SNAP RING-RETAINER

N.S.S. - Not Sold Separately  
N.I. - Not Illustrated  
% - Part Stock Recommendation

24000  
IDLER SHAFT GROUP



Date : 31-JAN-13  
Revised : E  
MODEL : 265229

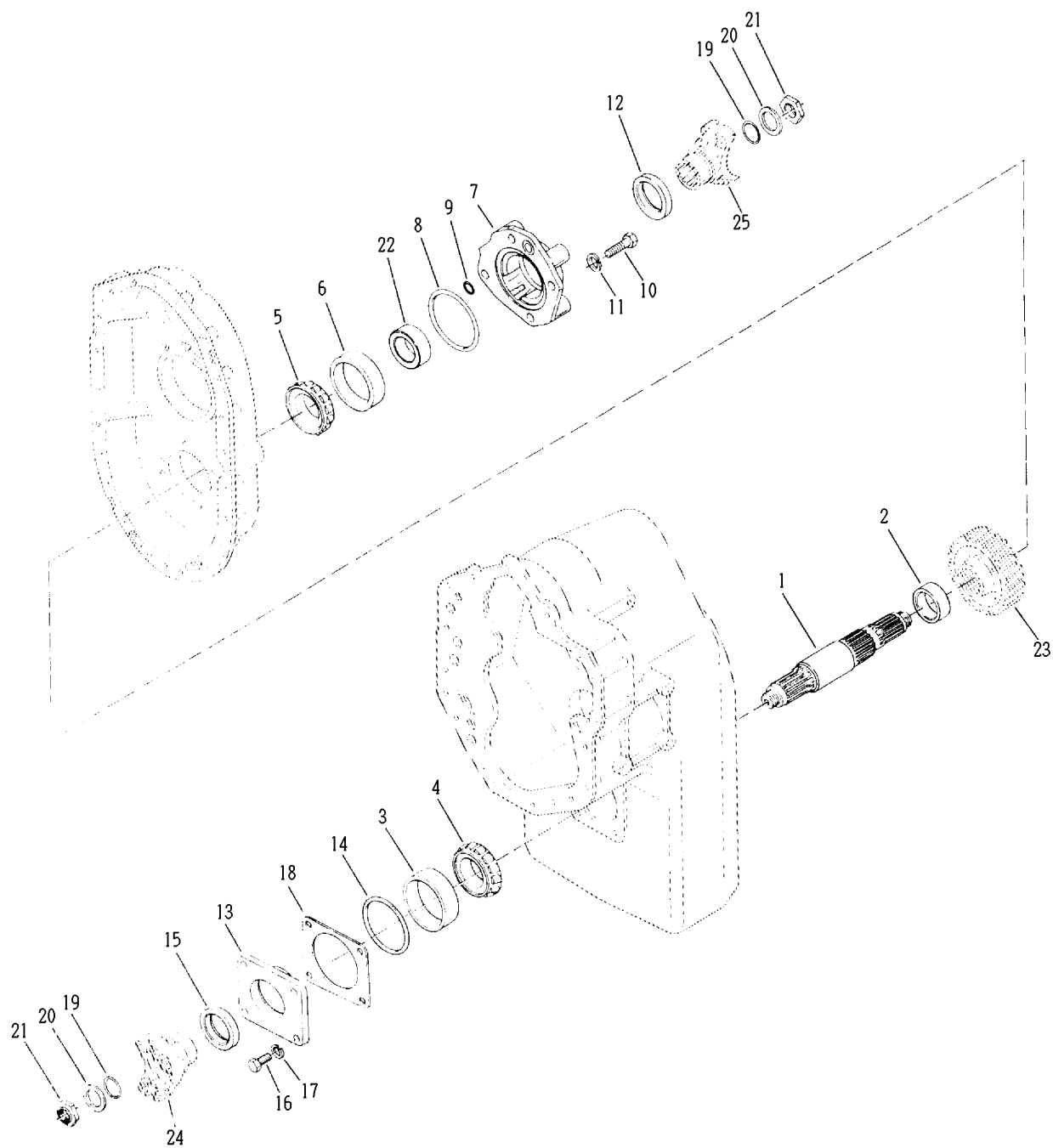
24000PS  
GROUP-IDLER SHAFT

<u>Item</u>	<u>Qty</u>	<u>Part Number</u>	<u>%</u>	<u>Description</u>
1	1	229862	C	BEARING
2	1	231646	C	BEARING (ROLLER)
3	1	10J15		BALL
4	1	230952	C	SNAP RING
5	1	215634	C	NUT-IDLER SHAFT
6	1	231412	E	CAP-IDLER SHAFT REAR BEARING
7	1	230918	B	GASKET-IDLER SHAFT REAR BEARING CAP
8	4	17C924		CAPSCREW
9	4	4E9H		LOCKWASHER
10				Not Used On This Model
11				Not Used On This Model
12				Not Used On This Model
13				Not Used On This Model
14				Not Used On This Model
15				GEAR-IDLER SHAFT - SEE GEAR GROUP

N.S.S. - Not Sold Separately  
N.I. - Not Illustrated  
% - Part Stock Recommendation

# 24000

## OUTPUT SHAFT GROUP



Date : 31-JAN-13  
Revised : E  
MODEL : 266607

24000PS  
GROUP-OUTPUT SHAFT

<u>Item</u>	<u>Qty</u>	<u>Part Number</u>	<u>%</u>	<u>Description</u>
1	1	243565	E	SHAFT-OUTPUT
2	1	235910	D	SPACER-OUTPUT SHAFT GEAR
3	1	243258	C	CUP-BEARING
4	1	247351	C	CONE-BEARING
5	1	247351	C	CONE-BEARING
6	1	243259	C	CUP-BEARING
7	1	244952	E	REAR BEARING CAP
8	1	60K40412	B	"O"-RING
9	1	60K30026	B	"O" RING
10	4	1C928		CAPSCREW
11	4	6E9		LOCKWASHER-BEARING CAP SCREW
12	1	230954	B	OIL SEAL
13	1	231818	E	CAP-FRONT BEARING
14	1	60K40400	B	"O" RING
15	1	4209656	B	OIL SEAL WITH GREASE PRELUBE
16	4	1C920		SCREW
17	4	4E9		LOCKWASHER
18A	AR	231848	D	SHIM DISCONNECT BEARING CAP (.004)
18B	AR	231849	D	SHIM DISCONNECT BEARING CAP (.007)
18C	AR	231850	D	SHIM DISCONNECT BEARING CAP (.010)
18D	AR	231851	D	SHIM DISCONNECT BEARING CAP (.020)
19	2	60K60116	B	"O"-RING
20	2	222179		WASHER-FLANGE
21	2	222960	C	NUT-FLANGE
22	1	244953	D	SPEEDMETER SENSOR GEAR

N.S.S. - Not Sold Separately  
N.I. - Not Illustrated  
% - Part Stock Recommendation

Date : 31-JAN-13  
Revised : E  
MODEL : 266607

24000PS  
GROUP-OUTPUT SHAFT

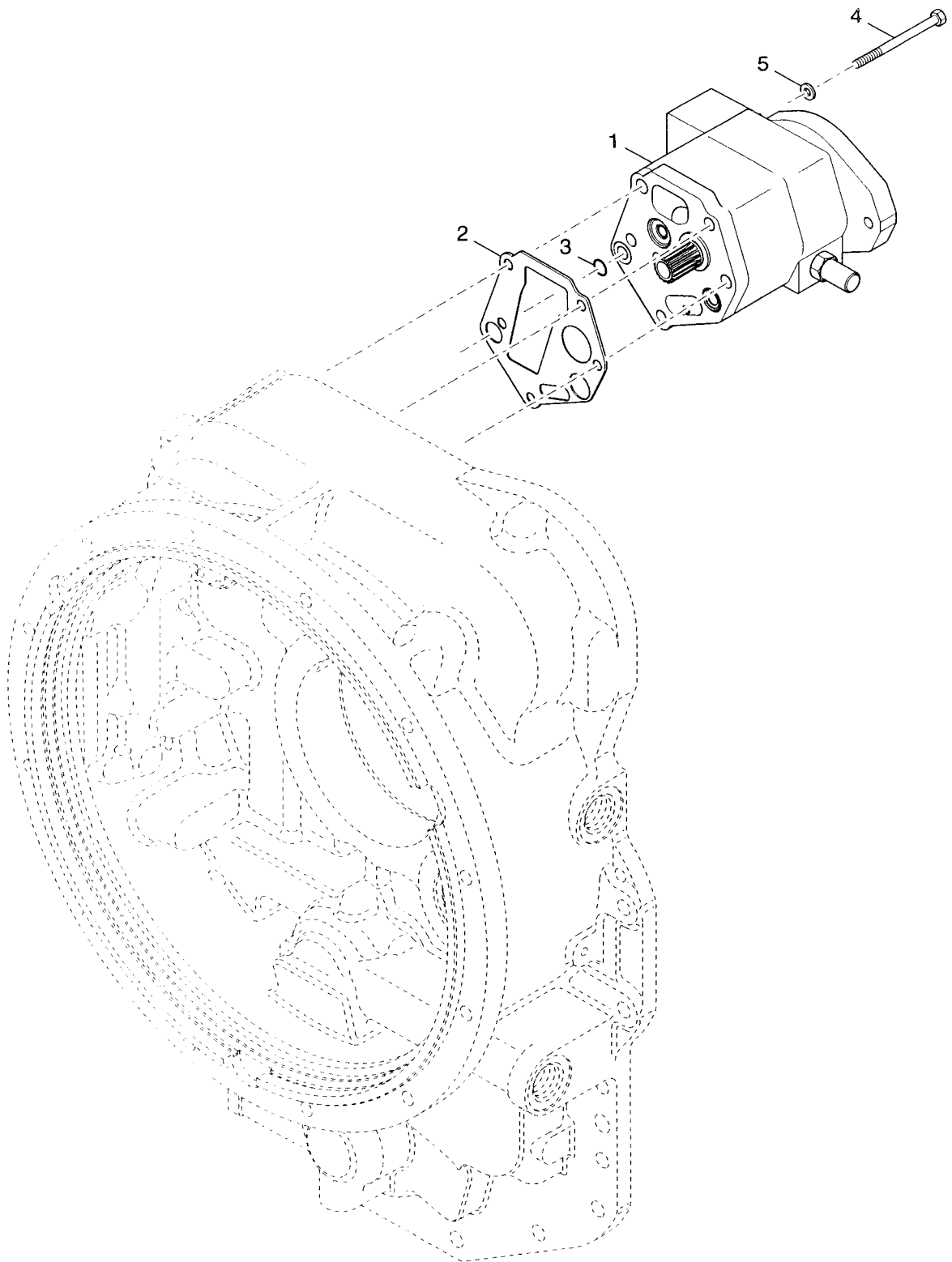
<u>Item</u>	<u>Qty</u>	<u>Part Number</u>	<u>%</u>	<u>Description</u>	
23				GEAR-OUTPUT - SEE GEAR GROUP	
24				FLANGE-OUTPUT FRONT - SEE FRONT PAGE	
25				FLANGE-OUTPUT REAR - SEE FRONT PAGE	
	1	1KM18		PLUG-SPEED SENSOR	N.I.
	1	60K30020	B	"O" RING-SPEED SENSOR	N.I.

N.S.S. - Not Sold Separately  
N.I. - Not Illustrated  
% - Part Stock Recommendation



# T20000

## CHARGING PUMP GROUP



Date : 31-JAN-13  
Revised :  
MODEL : 4503991

24000

GROUP-THRU DRIVE PUMP ASSEMBLY-SHORTER VERSION

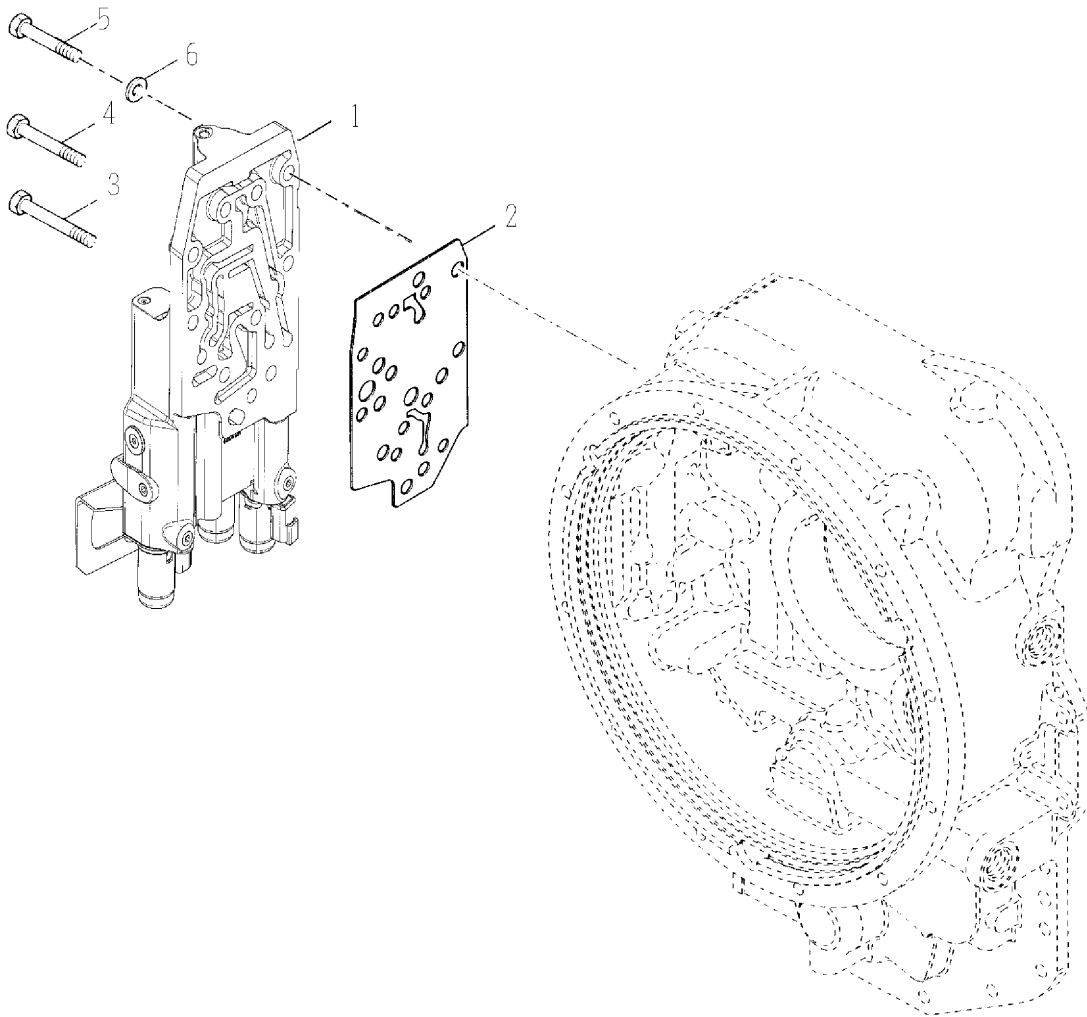
<u>Item</u>	<u>Qty</u>	<u>Part Number</u>	<u>%</u>	<u>Description</u>
1	1	4210730	E	ASSY-CHARGING PUMP
2	1	235283	B	GASKET-PUMP ASSEMBLY TO CONVERT HOUSING
3	1	60K30018	B	O RING
4	3	4E7		LOCKWASHER-PUMP MOUNTING SCREW
5	5	73G794		SCREW PUMP MOUNTING 5.75"LONG

N.S.S. - Not Sold Separately  
N.I. - Not Illustrated  
% - Part Stock Recommendation

# T20000

GROUP-VALVE 3 SPD

W/O INCHING, W/O DECLUTCH AND W/O MODULATION



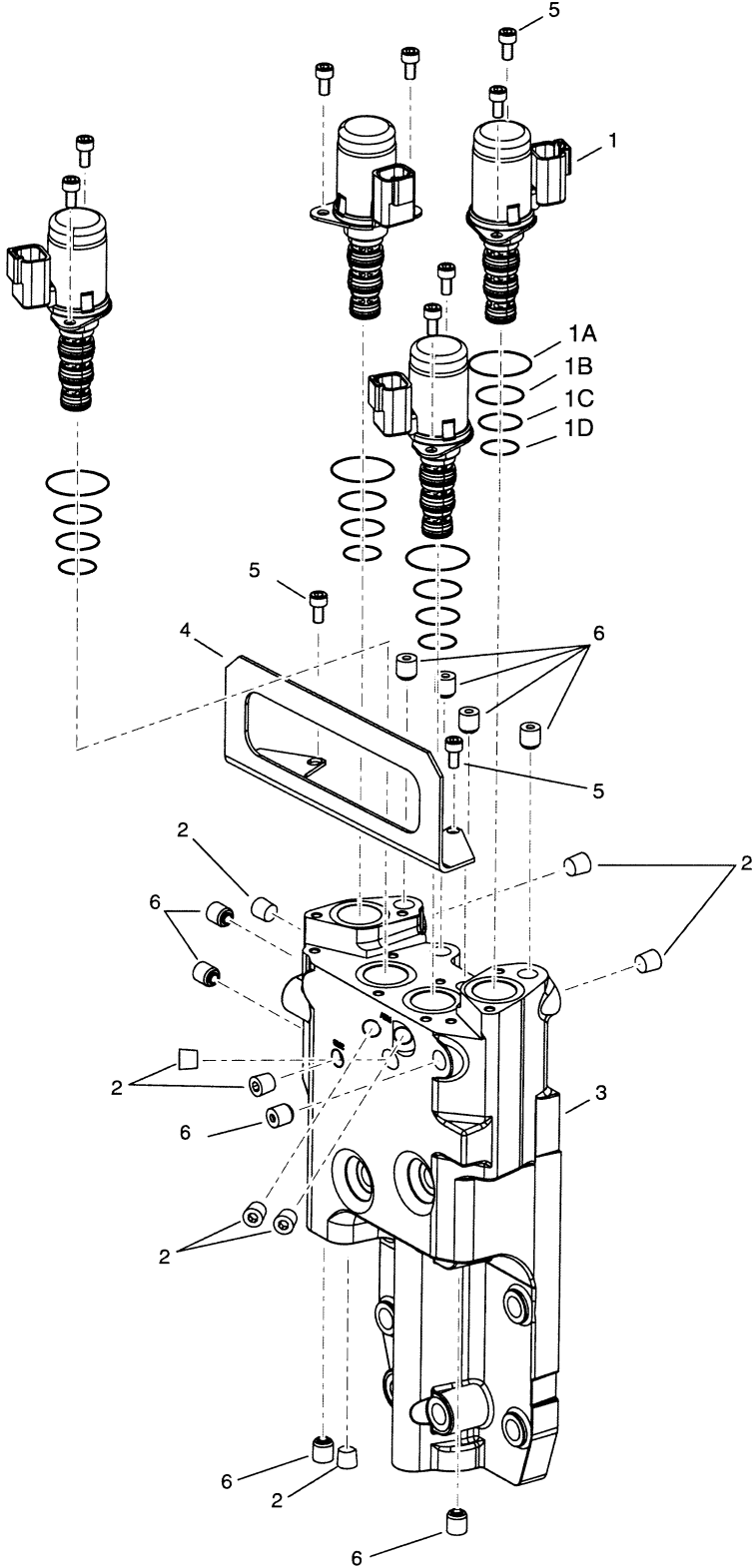
Date : 31-JAN-13  
Revised : A  
MODEL : 4504027

T20000  
GROUP-VALVE 3 SPEED

<u>Item</u>	<u>Qty</u>	<u>Part Number</u>	<u>%</u>	<u>Description</u>	
1	1	4211199	E	ASSY-VALVE - DEUTSCH 24V order partnumber 4211199 to service body plug expansions are part of assembly 4211199	
2	1	4211196	B	GASKET	
3	4	1C624		CAPSCREW	
4	3	1C636		CAPSCREW	
5	2	1C648		CAPSCREW	
6	9	4E6		LOCKWASHER	
	1	4213159		SHIPPING COVER DROPIN SOLENOIDS	N.I.

N.S.S. - Not Sold Separately  
N.I. - Not Illustrated  
% - Part Stock Recommendation

T20000  
ASSY-VALVE 3SP  
W/O INCHING & W/O DECLUTCH



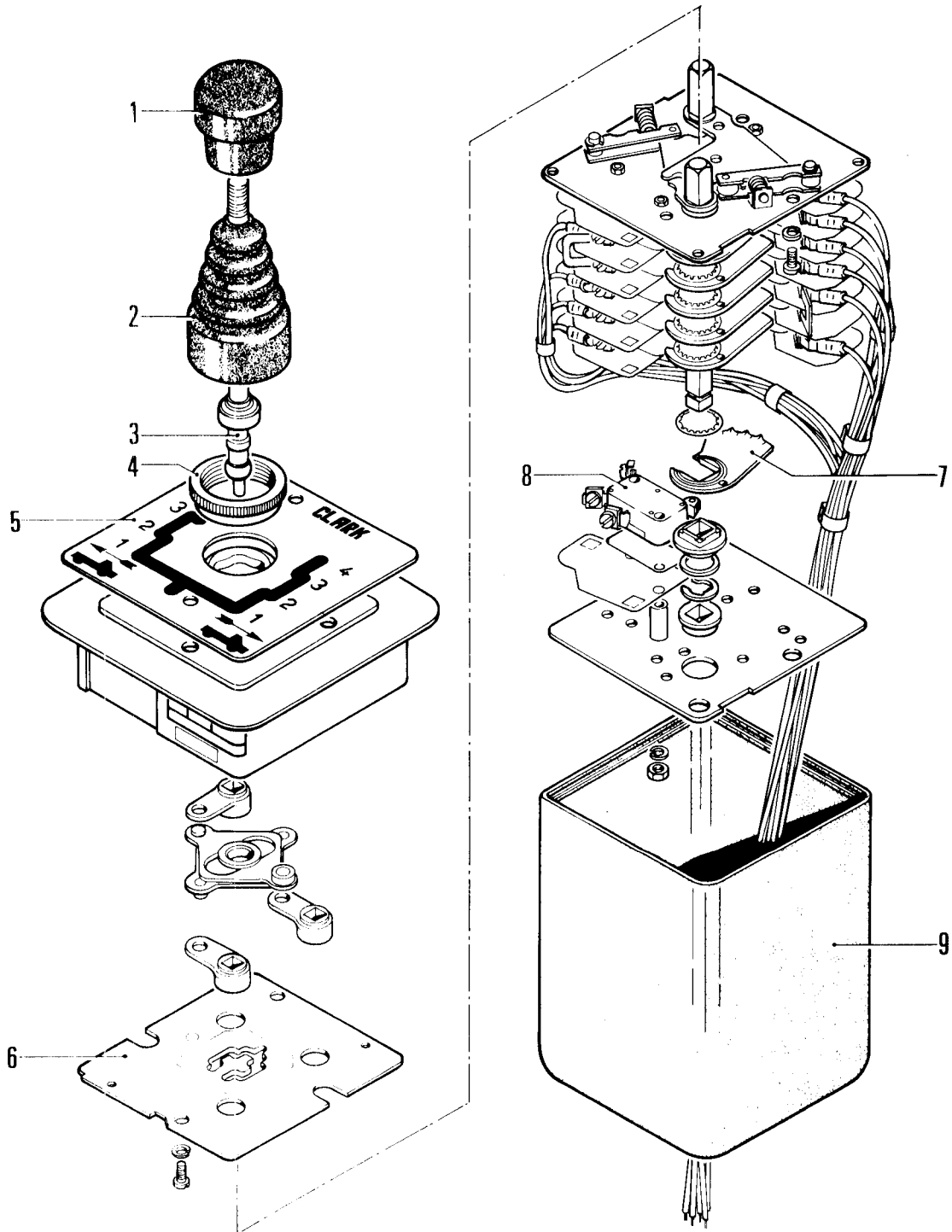
Date : 31-JAN-13  
Revised :  
MODEL : 4211199

T20000  
ASSY-VALVE - DEUTSCH 24V

<u>Item</u>	<u>Qty</u>	<u>Part Number</u>	<u>%</u>	<u>Description</u>
1	4	4211145	D	SOLENOID-DEUTSCH 24V-INCL.ITEMS 1A,1B,1C & 1D
1A	4	4210660	B	O-RING 21.5X1.5 MM VITON - PART OF ITEM 1
1B	4	4210661	B	O-RING 15.1X1.60 MM VITON - PART OF ITEM 1
1C	4	4210662	B	O-RING 14.1X1.60 MM VITON - PART OF ITEM 1
1D	4	4210663	B	O-RING 12.1X1.60 MM VITON - PART OF ITEM 1
2	8	239244		PLUG
3	1	N.S.S.		BODY order partnumber 4211199 to service body
4	1	4211435	D	COVER-SOLENOID
5	10	1GM510		CAPSCREW M5X10
6	9	N.S.S.		PLUG-EXPANSION DIA 10 plug expansions are part of assembly 4211199

N.S.S. - Not Sold Separately  
N.I. - Not Illustrated  
% - Part Stock Recommendation

ELECTRIC CAB CONTROL  
SINGLE LEVER



Date : 31-JAN-13  
Revised : A  
MODEL : 4200383

EGS50  
SINGLE LEVER CAB CONTROL

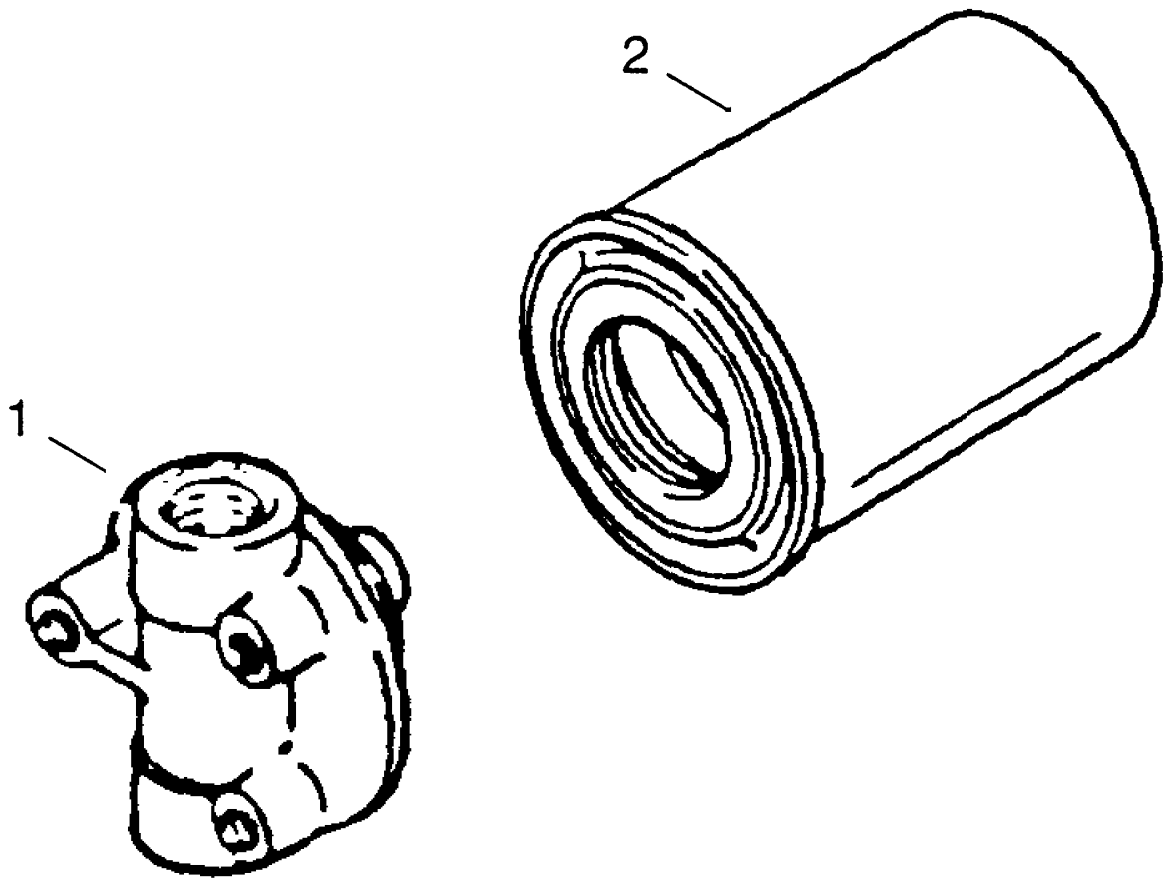
<u>Item</u>	<u>Qty</u>	<u>Part Number</u>	<u>%</u>	<u>Description</u>
1	1	4200597		KNOB
2	1	4200599		RUBBER GAITER
3	1	4200598		ASSY-SHIFT LEVER
4	1	4200600		KNURLED RING NUT
5	1	4200613		SHIFT PATTERN IDENT. PLATE
6	1	4200604		INTERNAL SHIFT PATTERN PLATE
7	1	4200486		CAM
7A	1	4200487		CAM
7B	1	4200488		CAM
7C	1	4200489		CAM
7D	1	4200490		CAM
7E	1	4200491		CAM
7F	1	4200492		CAM
7G	1	4200546		CAM
8	8	4200503		SINGLE LEVER CAB CONTROL
9	1	4200601		BODY PROTECTION CAB

N.S.S. - Not Sold Separately  
N.I. - Not Illustrated  
% - Part Stock Recommendation



# T20000

GROUP - REMOTE FILTER



Date : 14-FEB-13  
Revised :  
MODEL : 247055

18000-24000  
ASSEMBLY-OIL FILTER AND ADAPTOR

<u>Item</u>	<u>Qty</u>	<u>Part Number</u>	<u>%</u>	<u>Description</u>
1	1	236645	E	ADAPTOR-FILTER
2	1	247052	D	ASSEMBLY-OIL FILTER

N.S.S. - Not Sold Separately  
N.I. - Not Illustrated  
% - Part Stock Recommendation

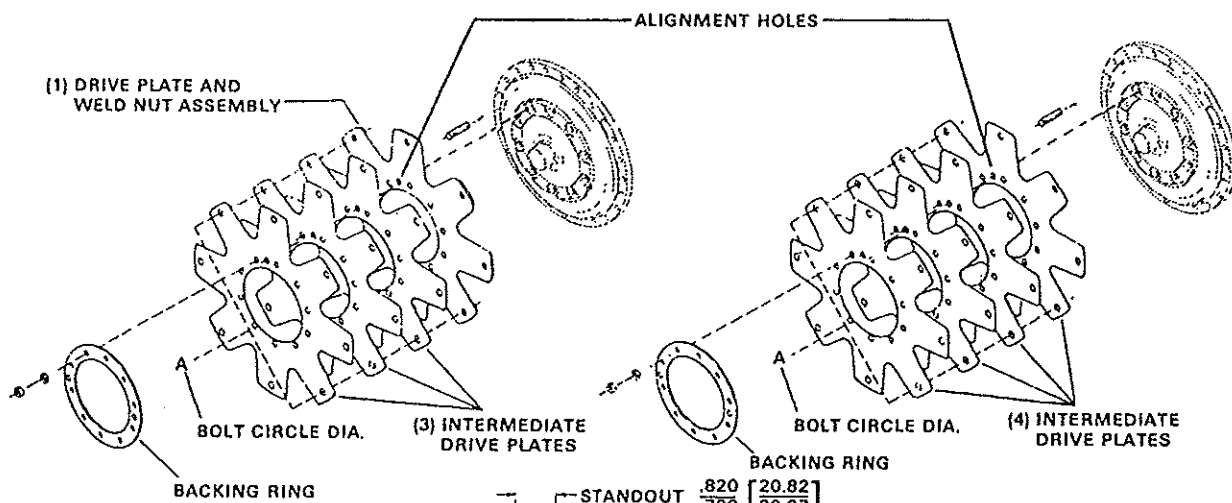
# TECHNICAL SERVICE BULLETIN

**SUBJECT: 24000 Series Transmission Drive Plate Kits.**

**REASON FOR BULLETIN: Proper Identification by Bolt Circle Diameter.**

Measure the "A" dimension (Bolt Circle diameter) and order Drive Plate Kit listed below.

Note four (4) kits have three (3) intermediate drive plates and one (1) drive plate and weld nut assembly. Two (2) kits with four intermediate drive plates.



- "A" Dimension (Bolt Circle Diameter)
- 11.38" (288,900 mm) Diameter  
Kit No. 802215
  - 13.125" (333,375 mm) Diameter  
Kit No. 802216
  - 13.50" (342,900 mm) Diameter  
Kit No. 802214
  - 17.00" (431,800 mm) Diameter  
Kit No. 802264

- "A" Dimension (Bolt Circle Diameter)
- 13.50" (342,900 mm) Diameter  
Kit No. 802217
  - 13.125" (333,375 mm) Diameter  
Kit No. 802263
  - 17.000" (431,800 mm) Diameter  
Kit No. 802278

- Each Kit will include the following parts:
- 3 Intermediate Drive Plates.
  - 1 Drive Plate and Weld Nut Assembly.
  - 1 Backing Ring.
  - 10 Studs.
  - 10 Lockwashers.
  - 10 Stud Nuts.
  - 1 Instruction Sheet.

- Each kit will include the following parts:
- 4 Intermediate Drive Plates.
  - 1 Backing Ring.
  - 10 Studs.
  - 10 Lockwashers.
  - 10 Stud Nuts.
  - Instruction Sheet.

## Drive Plate Installation Procedure

TO FACILITATE ASSEMBLY, ALIGN SMALL HOLES IN DRIVE PLATES—SEE ILLUSTRATION ABOVE.

Clean tapped holes and studs thoroughly with Loctite 755 Solvent. Must be free of any grease or oil. Spray Loctite 747 Primer "T" in tapped holes and on studs and allow to dry. Apply Loctite 262 Threadlocker to both tapped holes and (16 NC thread) stud end. Assemble to standoff shown. Remove excess Loctite after assembly. Allow 30 minutes minimum before installing on engine. NOTE: If Loctite 747 Primer "T" is not used, allow 24 hours for the threadlocker to cure before installing on engine.

Position drive plate and weld nut assembly on impeller cover studs with weld nuts toward cover. Align intermediate drive plate and backing ring with studs in impeller cover. NOTE: Two dimples 180° apart in backing ring must be out (toward engine flywheel). Install washers and stud nuts. With a calibrated torque wrench, tighten nuts 26 to 29 ft. lbs. torque [35,3 - 39,3 N.m].

Over for TRANSMISSION TO ENGINE INSTALLATION PROCEDURE  
©Copyright Clark Equipment Company 1989  
Unpublished material - - All rights reserved

## TRANSMISSION TO ENGINE INSTALLATION PROCEDURE

1. Remove all burrs from flywheel mounting face and nose pilot bore. Clean drive plate surface with solvent.
2. Check engine flywheel and housing for conformance to standard S.A.E. #3 - S.A.E. J-927 tolerance specifications for pilot bore size, pilot bore runout and mounting face flatness. Measure and record engine crankshaft end play.
3. Install two 2.50 [63, 50 mm] long transmission to flywheel housing guide studs in the engine flywheel housing as shown. Rotate the engine flywheel to align a drive plate mounting screw hole with the flywheel housing access hole.
4. Install a 4.00 [101, 60 mm] long drive plate locating stud .3750-24 fine thread in a drive plate nut. Align the locating stud in the drive plate with the flywheel drive plate mounting screw hole positioned in step No. 3.
5. Locate transmission on flywheel housing aligning drive plate to flywheel and transmission to flywheel housing. **NOTE:** Fig. 4 installation, align drive plate holes with flywheel studs.

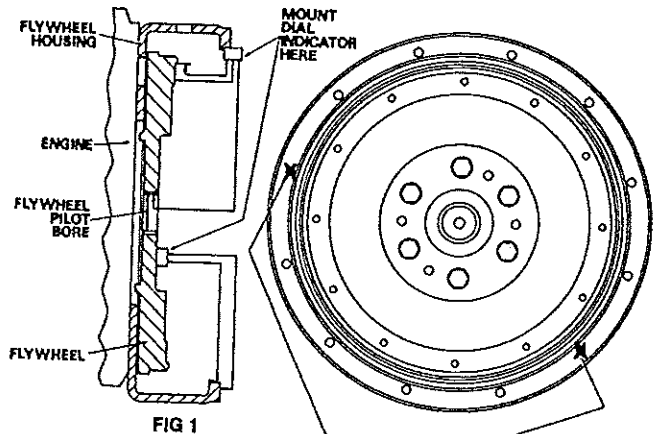


FIG 1

Install transmission to flywheel housing screws. Tighten screws to specified torque. Remove transmission to engine guide studs. Install remaining screws and tighten to specified torque.

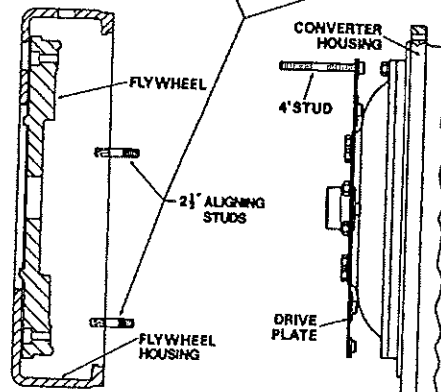


FIG 2

6. Remove drive plate locating stud.
7. Install drive plate attaching screw and washer. Snug screw but do not tighten. **NOTE:** Fig. 4 installation, install drive plate attaching washers and nuts. Tighten each nut 28 to 30 ft. lbs. torque [38,0 - 40,6 N.m]. Some engine flywheel housings have a hole located on the flywheel housing circumference in line with the drive plate screw access hole. A screwdriver or pry bar used to hold the drive plate against the flywheel will facilitate installation of the drive plate screws. Rotate the engine flywheel and install the remaining seven (7) flywheel to drive plate attaching screws. Snug screws but do not tighten. After all eight (8) screws are installed torque each one 25 to 30 ft. lbs. torque [33,9 - 40,6 N.m]. This will require torquing each screw and rotating the engine flywheel until the full amount of eight (8) screws have been tightened.

SPECIAL STUD, WASHER AND SELF LOCK NUT FURNISHED BY ENGINE MANUFACTURER.

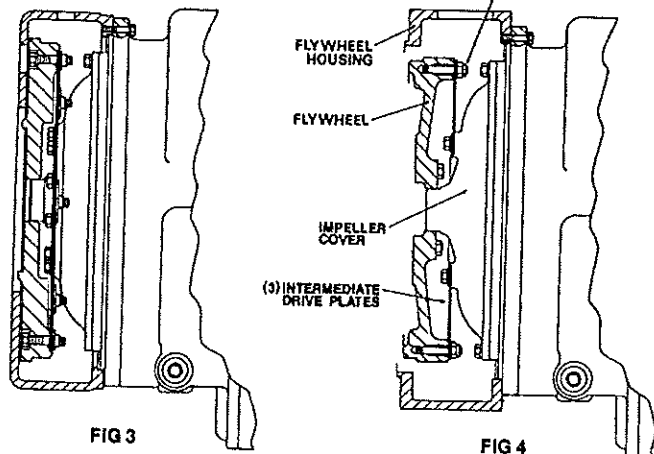


FIG 3

FIG 4

8. Measure engine crankshaft end play after transmission has been completely installed on engine flywheel. This value must be within .001 [0,025mm] of the end play recorded in step No. 2.

\* Does not apply to units having 3 intermediate drive plates. See Fig. 4.

Model: 24000

KIT-GASKET AND SEALING FOR 3,4 AND 6 SPD LD  
 -HR AND LMHR VERSION- CONVERTER AND TRANSMISSION SECTION  
 WITH STEEL TORQUE CONVERTER

---

 QTY SHOWN IS TO MAKE ONE OF THE NEXT HIGHER ASSEMBLY
 

---

REV	P	PART NUMBER	QTY	S/E	PARTNAME AND APPLICATION
		219373	2		GASKET
		223085	1		RING-PISTON
		225823	1		SEAL-OIL
		230918	1		IDLER SHAFT REAR BEARING CAP GASKET
		230954	2		SEAL-OIL
		234113	6		SEAL-CLUTCH PISTON OUTER
		234643	2		SEAL-PUMP SHAFT
		234650	2		SEAL-OIL
		235283	1		GASKET-PUMP ASSEMBLY TO CONVERTER HOUSING
		237032	6		SEAL-CLUTCH PISTON INNER
		241279	1		GASKET-CONV. HSG. TO TRANSM CASE
		241893	1		SEAL-OIL
		242651	4		RING-PISTON
		242685	1		GASKET-REAR BEARING CAP
		243045	1		GASKET-FILTER ADAPTOR
		249124	1		SPRING-PISTO RING EXPANDER
		245772	1		RING-PISTON
		243052	1		SEAL-OIL
		247614	1		GASKET-CONTROL VALVE TO MODULATION VALVE
		247615	1		GASKET-MODULATION VALVE TO CONV. HSG.
		248006	1		GASKET-MODULATION HSG TO CONV. HSG.
		248047	1		GASKET-SHUTTLE VALVE TO ELECTRIC CONTROL
		249158	1		RING-PISTON SEAL
		250215	1		RING-PISTON
		4204710	1		SEAL-OIL
		4205272	1		GASKET-SHIPPING COVER
		4208098	6		RING-PISTON

---

Ltr :  
 Date:  
 ECN :

Issued : sv

Rel : sv  
 Date: 06-MAR-09  
 ERN : SERVICE

Model: 24000

KIT-GASKET AND SEALING FOR 3,4 AND 6 SPD LD  
 -HR AND LMHR VERSION- CONVERTER AND TRANSMISSION SECTION  
 WITH STEEL TORQUE CONVERTER

---

 QTY SHOWN IS TO MAKE ONE OF THE NEXT HIGHER ASSEMBLY
 

---

REV	P	PART NUMBER	QTY	S/E	PARTNAME AND APPLICATION
		4209656	1		SEAL-OIL
		4210660	5		O-RING
		4210661	5		O-RING
		4210662	5		O-RING
		4210663	5		O-RING
		4211009	1		GASKET
		4215354	1		O RING
		60K30012	2		O-RING
		60K30016	1		O-RING
		60K30018	2		O-RING
		60K30020	2		O-RING
		60K30026	1		O-RING
		60K30022	1		O-RING
		60K30110	1		O-RING
		60K40026	7		O-RING
		60K40104	1		O-RING
		60K30120	1		O-RING
		60K40400	2		O-RING
		60K40412	2		O-RING
		60K40428	1		O-RING
		60K60116	2		O-RING
		76K223	1		O-RING
		91F7	4		O-RING
		60K40120	2		O-RING
		241894	1		SEAL-OIL
		91F8	1		O-RING
		60K40908	1		O-RING

---

Ltr :  
 Date:  
 ECN :

Issued : sv

Rel : sv  
 Date: 06-MAR-09  
 ERN : SERVICE

Model: 24000

KIT-GASKET AND SEALING FOR 3,4 AND 6 SPD LD  
-HR AND LMHR VERSION- CONVERTER AND TRANSMISSION SECTION  
WITH STEEL TORQUE CONVERTER

---

QTY SHOWN IS TO MAKE ONE OF THE NEXT HIGHER ASSEMBLY

REV	P	PART NUMBER	QTY	S/E	PARTNAME AND APPLICATION
		60K40120	2		O-RING
		239892	1		SEAL-OIL
		60K40200	1		O-RING
		4200704	1		GASKET - LOW SPEED DRIVE BEARING CAP
		248006	1		GASKET-MODULATION HSG TO CONV. HSG.
		243915	1		GASKET-PUMP ADAPTOR
		231798	1		SEAL-OIL
		232125	1		CONVERTER HOUSING FRONT COVER GASKET
		60K40520	2		O-RING

---

Ltr :  
Date:  
ECN :

Issued : sv

Rel : sv  
Date: 06-MAR-09  
ERN : SERVICE



## Part Stocking Recommendation

The table below is a minimum spare parts inventory recommendation designated by letter code in each Service Parts List. Each letter code indicates a percentage for determining stock quantities to support the field population. Any quantity less than 1 or partial quantities need not be stocked.

Letter Code	Percentage	Example
A	15%	Part quantity = 10 per unit Field Population = 240 units Recommended stock = $240 \text{ units} \times 10 \text{ per unit} \times .15 = 360 \text{ parts}$
B	10%	Part quantity = 4 per unit Field Population = 66 units Recommended stock = $66 \text{ units} \times 4 \text{ per unit} \times .10 = 26.4 \text{ or } 26 \text{ parts}$
C	6%	Part quantity = 2 per unit Field Population = 203 units Recommended stock = $203 \text{ units} \times 2 \text{ per unit} \times .06 = 24.4 \text{ or } 24 \text{ parts}$
D	4%	Part quantity = AR* Field Population = 42 units Recommended stock = $42 \text{ units} \times 3 \text{ per unit} \times .04 = 5.04 \text{ or } 5 \text{ parts}$
E	2%	Part quantity = 1 per unit Field Population = 75 units Recommended stock = $75 \text{ units} \times 1 \text{ per unit} \times .02 = 1.5 \text{ or } 1 \text{ part}$
*Part quantities denoted by "AR" (as required) should be ordered by a quantity of 3 per unit.		





© Copyright 2013 Dana Holding Corporation  
All content is subject to copyright by Dana and may not be reproduced in whole or in part by any means, electronic or otherwise, without prior written approval.  
THIS INFORMATION IS NOT INTENDED FOR SALE OR RESALE, AND THIS NOTICE MUST REMAIN ON ALL COPIES.

For product inquiries or support,  
visit [www.dana.com](http://www.dana.com) or call 419-887-6445  
For other service publications,  
visit [www.SpicerParts.com/literature.asp](http://www.SpicerParts.com/literature.asp)  
For online service parts ordering,  
visit [www.SpicerParts.com/order.asp](http://www.SpicerParts.com/order.asp)



**SPICER®**

*Off-Highway Products*