



SPICER®

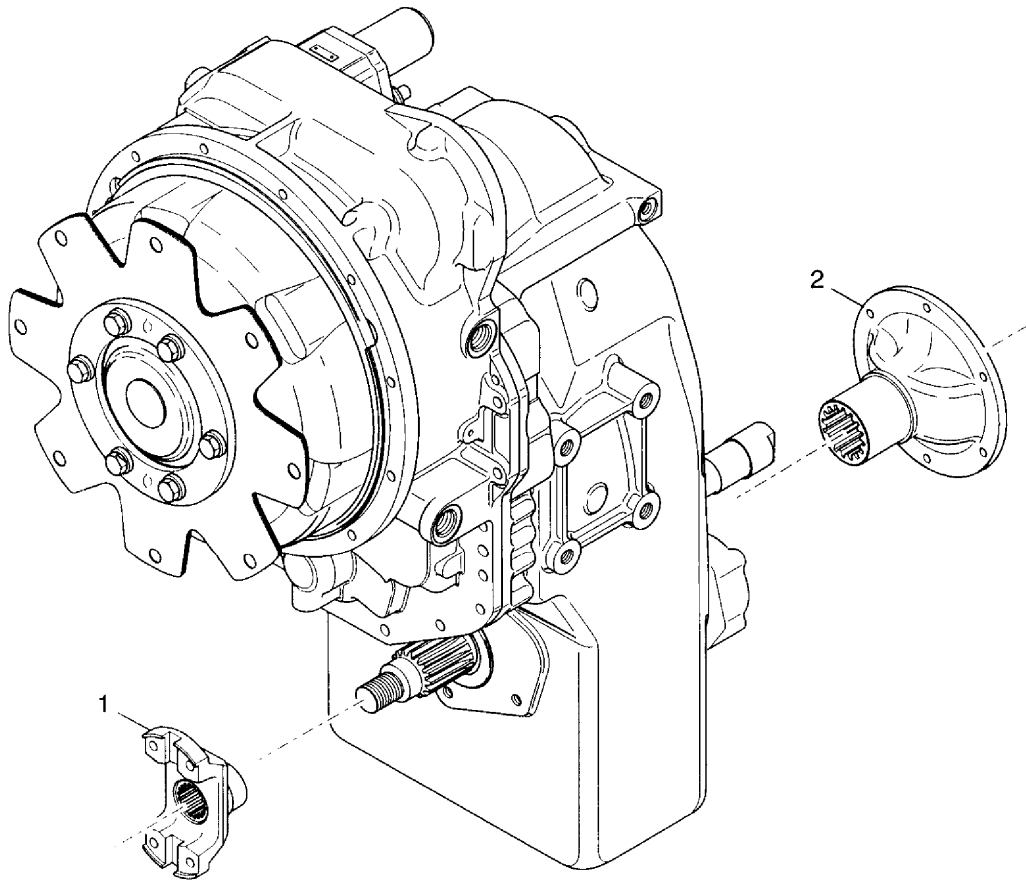
Off-Highway Products

Service Parts List

Transmission
1204FT20321-103
4265451

TPL-1726
Aug 2012

T20000 Series



GRP-T20-04 rev. 140302

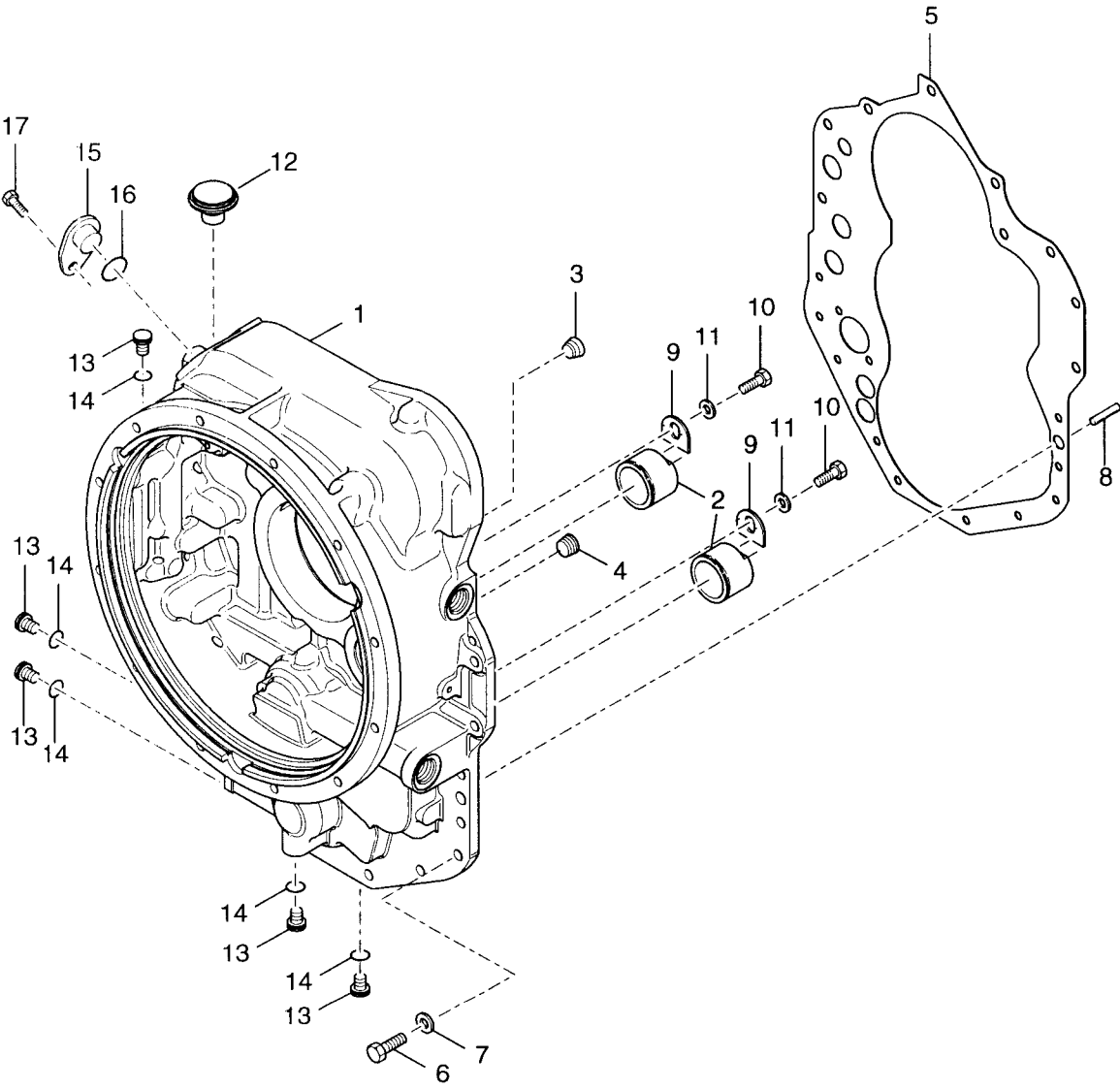
Date : 22-AUG-12
Revised :
MODEL : 4265451

1204FT20321-103
ASSY-T20000 TRANSMISSION FOR PAUS

<u>Item</u>	<u>Qty</u>	<u>Part Number</u>	<u>%</u>	<u>Description</u>	
1	1	4200030	E	FLANGE-COMPANION 387/30	
2	1	4200030	E	FLANGE-COMPANION 387/30	
	1	4217546	C	GAUGE-CLUTCH PRESSURE	N.I.
	1	234033	C	GAUGE-TEMPERATURE	N.I.
	1	4200799		SET-CLAMP	N.I.
	4	4210487		INTERFACE CABLE: DEUTSCH-WEATHER-PACK	N.I.

N.S.S. - Not Sold Separately
N.I. - Not Illustrated
% - Part Stock Recommendation

T20000
GROUP CONVERTER HOUSING



Date : 22-AUG-12
Revised : B
MODEL : 4501189

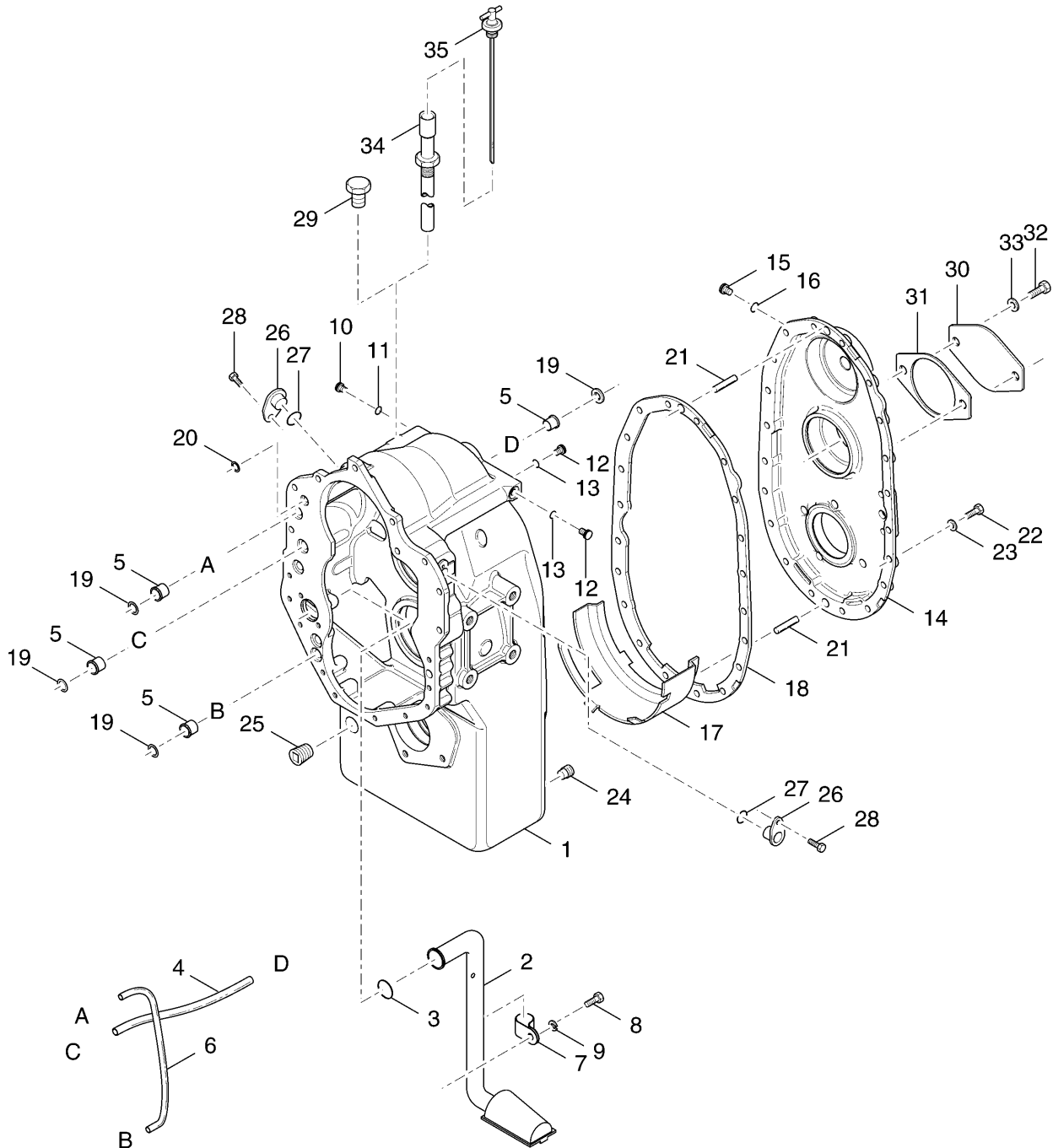
T20000
GROUP-CONVERTER HOUSING

<u>Item</u>	<u>Qty</u>	<u>Part Number</u>	<u>%</u>	<u>Description</u>
1	1	4205088	E	ASSY-CONVERTER HOUSING AND PLUG
2	2	248612	C	SLEEVE-CONVERTER HOUSING
3	1	11F8		PLUG-PIPE TEMP PICKUP
4	1	239244		PLUG-PIPE
5	1	4205090	B	GASKET-CONV HSG TO TRANS CASE
6	18	17C720		SCREW-CONV HSG TO TRANS CASE
7	18	4E7		LOCKWASHER-CONV HSG TO TRANS CA
8	1	4203907		PIN-CONV HSG TO TRANS CASE DOWE
9	2	230851		CLIP
10	2	1C510		SCREW-CLIP
11	2	4E5	E	LOCKWASHER-CLIP SCREW
12	1	238535	C	AIR-BREATHER
13	5	47K5		PLUG - INCLUDING ITEM 14
14	5	91F5	B	"O" RING - PLUG - PART OF ITEM 13
15	1	4202489		PLUG-SPEED SENSOR PORT
16	1	4203422	B	"O" RING-SPEED SENSOR
17	1	3GM612		SCREW-SPEED SENSOR

N.S.S. - Not Sold Separately
N.I. - Not Illustrated
% - Part Stock Recommendation

T20000

CASE & REAR COVER GROUP



Date : 22-AUG-12
Revised : G
MODEL : 4501190

T20000
GROUP-TRANSMISSION CASE & COVER

<u>Item</u>	<u>Qty</u>	<u>Part Number</u>	<u>%</u>	<u>Description</u>
1	1	4205091	E	ASSY-TRANSM. CASE -INCL. ITEMS 2 THRU 9
2	1	4205093		ASSY-SUCTION TUBE
3	1	4205097	B	O RING-SUCTION TUBE ASSEMBLY
4	1	234157	D	TUBE-LOW CLUTCH
5	4	222067	E	SLEEVE-PRESSURE & LUBRICATION TUBE
6	1	4205098	D	TUBE-3RD CLUTCH PRESSURE
7	1	6H42		CLIP-CLOSED - PART OF ITEM 2
8	1	1C712		SCREW-TUBE CLIP
9	1	4E7		LOCKWASHER-TUBE CLIP SCREW
10	1	47K5		PLUG-INCLUDING ITEM 11
11	1	91F5	B	"O" RING-PLUG-PART OF ITEM 10
12	2	47K6		PLUG-INCLUDING ITEM 13
13	2	91F6	B	"O" RING-PLUG-PART OF ITEM 12
14	1	4205099	E	ASSY-REAR COVER & PLUG-INCLUDING ITEM 15
15	1	47K5		PLUG-INCLUDING ITEM 16
16	1	91F5	B	"O" RING-PLUG-PART OF ITEM 15
17	1	4205472		OIL-BAFFLE
18	1	4205101	B	GASKET-TRANS CASE TO REAR COVER
19	4	60K40026	B	"O" RING-CLUTCH PRESSURE TUBE
20	1	60K30018	B	"O" RING-CLUTCH PRESSURE
21	2	4203907		PIN-TRANS CASE TO REAR COVER DOWEL
22	20	17C728		SCREW-REAR COVER TO TRANS CASE
23	20	4E7		LOCKWASHER-REAR COVER TO CASE SCREW
24	2	215757		PLUG-MAGNETIC DRAIN
25	1	11F16		PLUG-DRAIN BACK HOLE

N.S.S. - Not Sold Separately
N.I. - Not Illustrated
% - Part Stock Recommendation

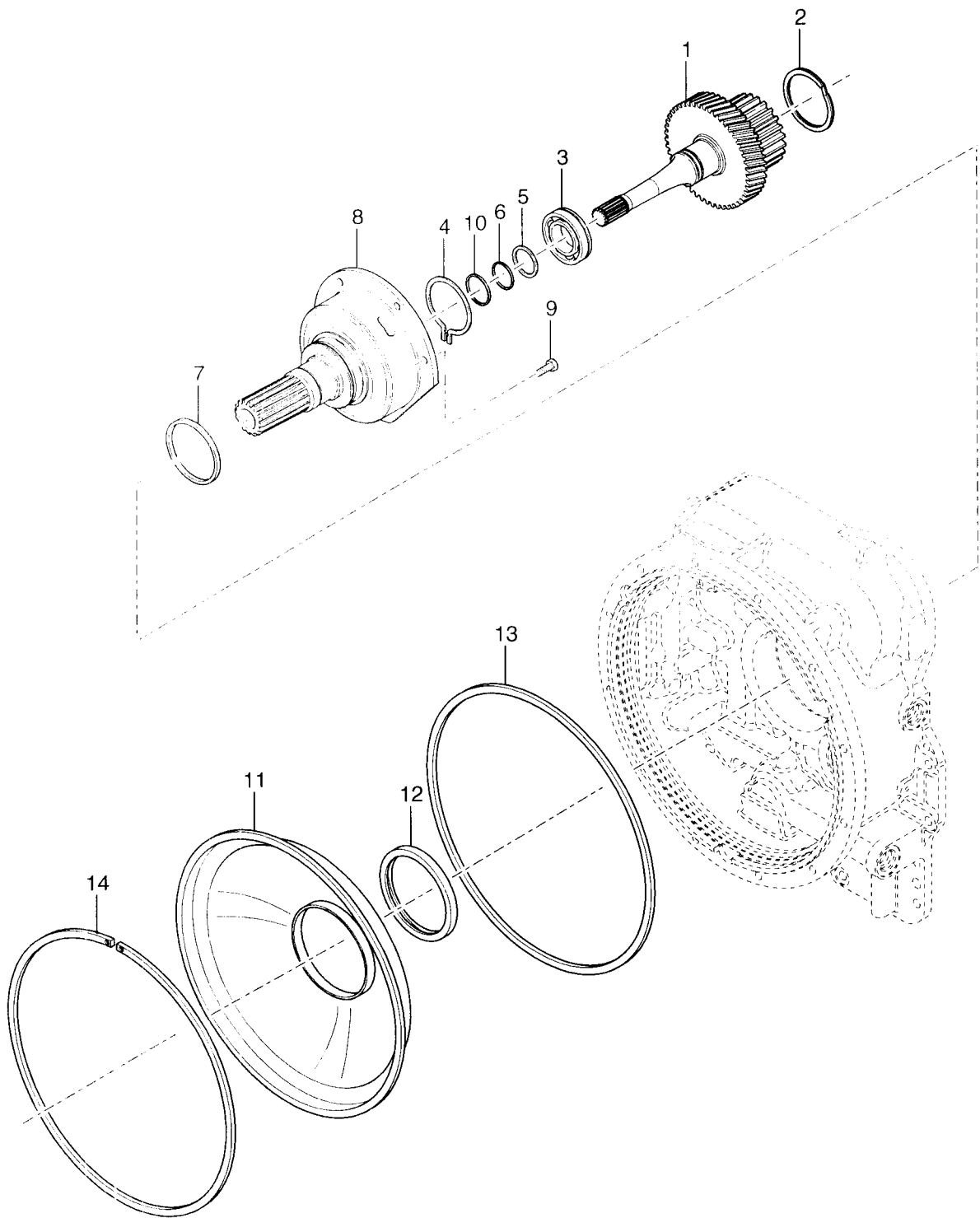
Date : 22-AUG-12
Revised : G
MODEL : 4501190

T20000
GROUP-TRANSMISSION CASE & COVER

<u>Item</u>	<u>Qty</u>	<u>Part Number</u>	<u>%</u>	<u>Description</u>
26	2	4202489		PLUG-SPEED SENSOR PORT
27	2	4203422	B	"O"-RING-SPEED SENSOR
28	2	3GM612		SCREW-SPEED SENSOR
29				Not Used On This Model
30	1	219430	E	COVER-PUMP ADAPTOR
31	1	232640	B	GASKET-COVER
32	2	1C612		SCREW-COVER
33	2	4E6		LOCKWASHER-COVER SCREW
34	1	236669	D	ASSY-DIPSTICK TUBE
35	1	242603	C	DIPSTICK

N.S.S. - Not Sold Separately
N.I. - Not Illustrated
% - Part Stock Recommendation

T20000
GROUP TURBINE SHAFT



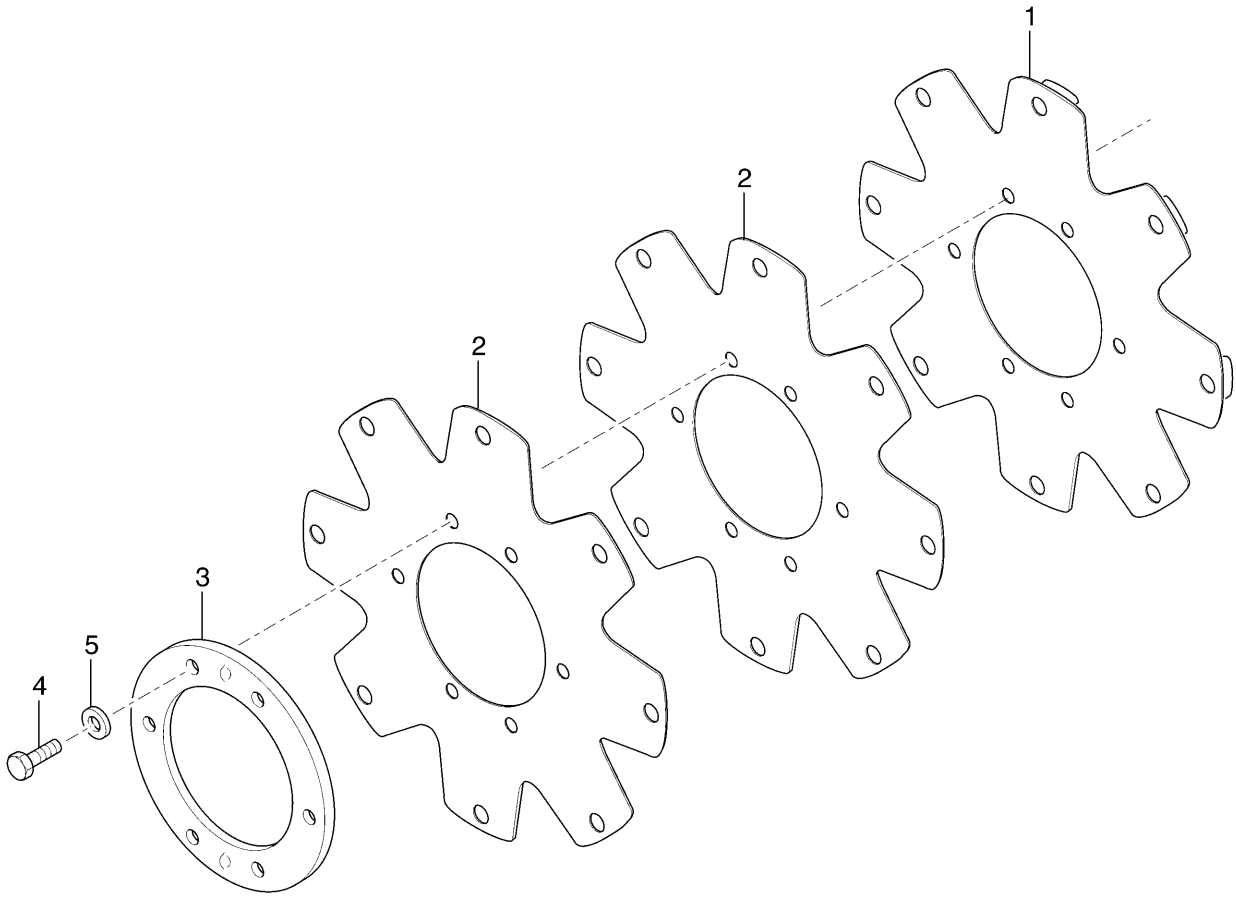
Date : 22-AUG-12
Revised :
MODEL : 4501191

T20000
GROUP-TURBINE SHAFT

<u>Item</u>	<u>Qty</u>	<u>Part Number</u>	<u>%</u>	<u>Description</u>
1	1	4205762	D	ASSY-TURBINE SHAFT,HUB & RET.RING-INCL.ITEM 2
2	1	240617	D	RING-RETAINING - PART OF ITEM 1
3	1	4205105	C	BEARING-BALL
4	1	234229	C	SNAP RING-BEARING
5	1	234230	D	WASHER-BEARING SUPPORT
6	1	231776	C	RING-BEARING RETAINING
7	1	4205235	B	RING-PISTON
8	1	4205236	D	SUPPORT-STATOR
9	6	241308		SCREW-STATOR SUPPORT
10	1	250219	B	RING-PISTON
11	1	242831	E	ASSY-OIL BAFFLE & SEAL - INCLUDING ITEM 12
12	1	4204710	B	SEAL-OIL BAFFLE - PART OF ITEM 11
13	1	241237	B	RING-OIL BAFFLE SEAL
14	1	245787	D	RING-OIL BAFFLE RETAINING

N.S.S. - Not Sold Separately
N.I. - Not Illustrated
% - Part Stock Recommendation

T20000
DRIVE PLATE GROUP



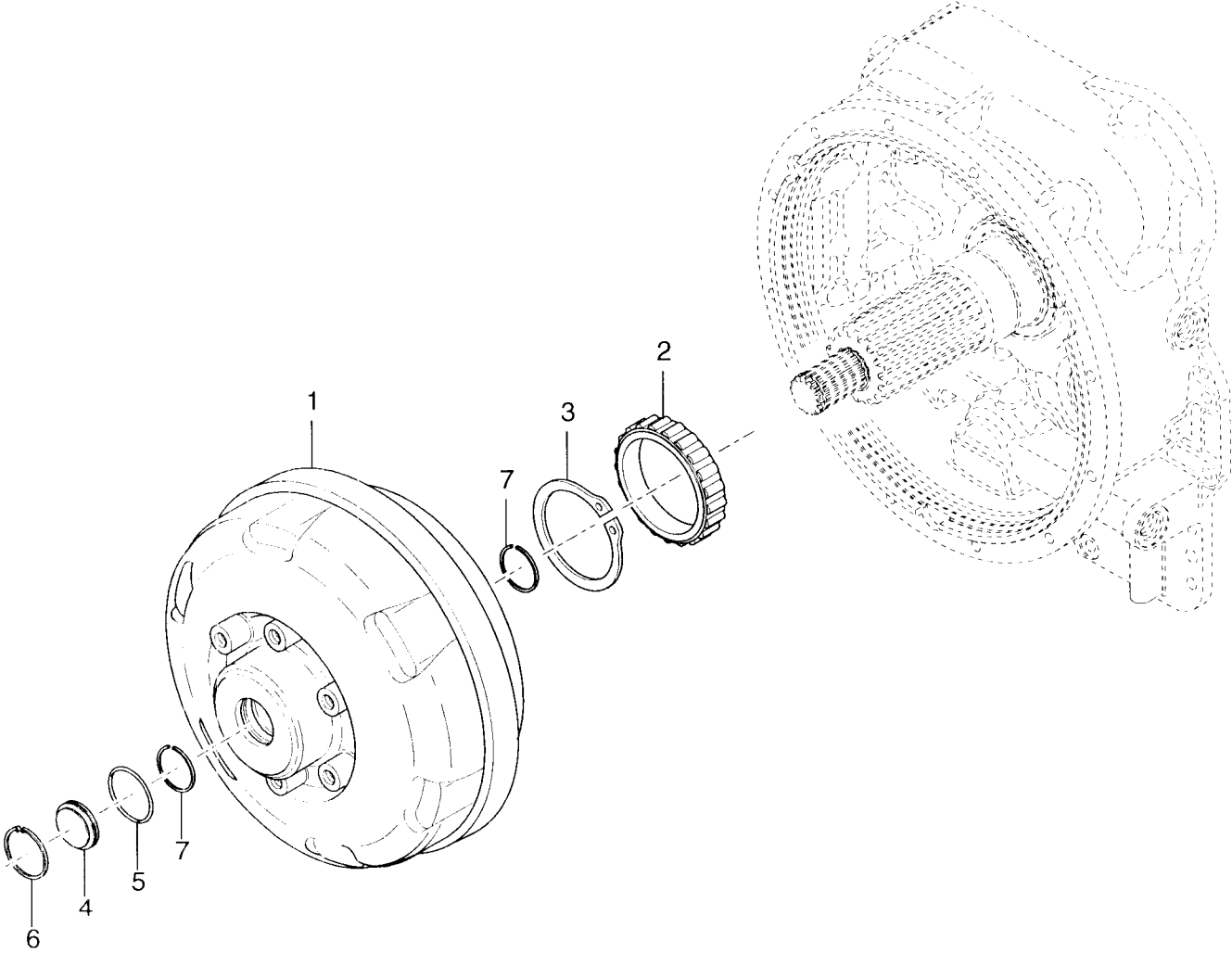
Date : 22-AUG-12
Revised : A
MODEL : 4501282

T20000
GROUP-DRIVE PLATE

<u>Item</u>	<u>Qty</u>	<u>Part Number</u>	<u>%</u>	<u>Description</u>
1	1	N.S.S.		ASSY-DRIVE PLATE - INCLUDING IN ITEM 6
2	2	N.S.S.		PLATE-DRIVE - INCLUDING IN ITEM 6
3	1	4205107		RING-DRIVE PLATE BACKING
4	6	1CM1016		CAPSCREW
5	6	6EM100		LOCKWASHER-DRIVE PLATE MTG
	1	814977	E	KIT - DRIVE PLATE - INCL. ITEMS 1 THRU 5 N.I.

N.S.S. - Not Sold Separately
N.I. - Not Illustrated
% - Part Stock Recommendation

T20000
GROUP TORQUE CONVERTER



Date : 22-AUG-12
Revised :
MODEL : 4501193

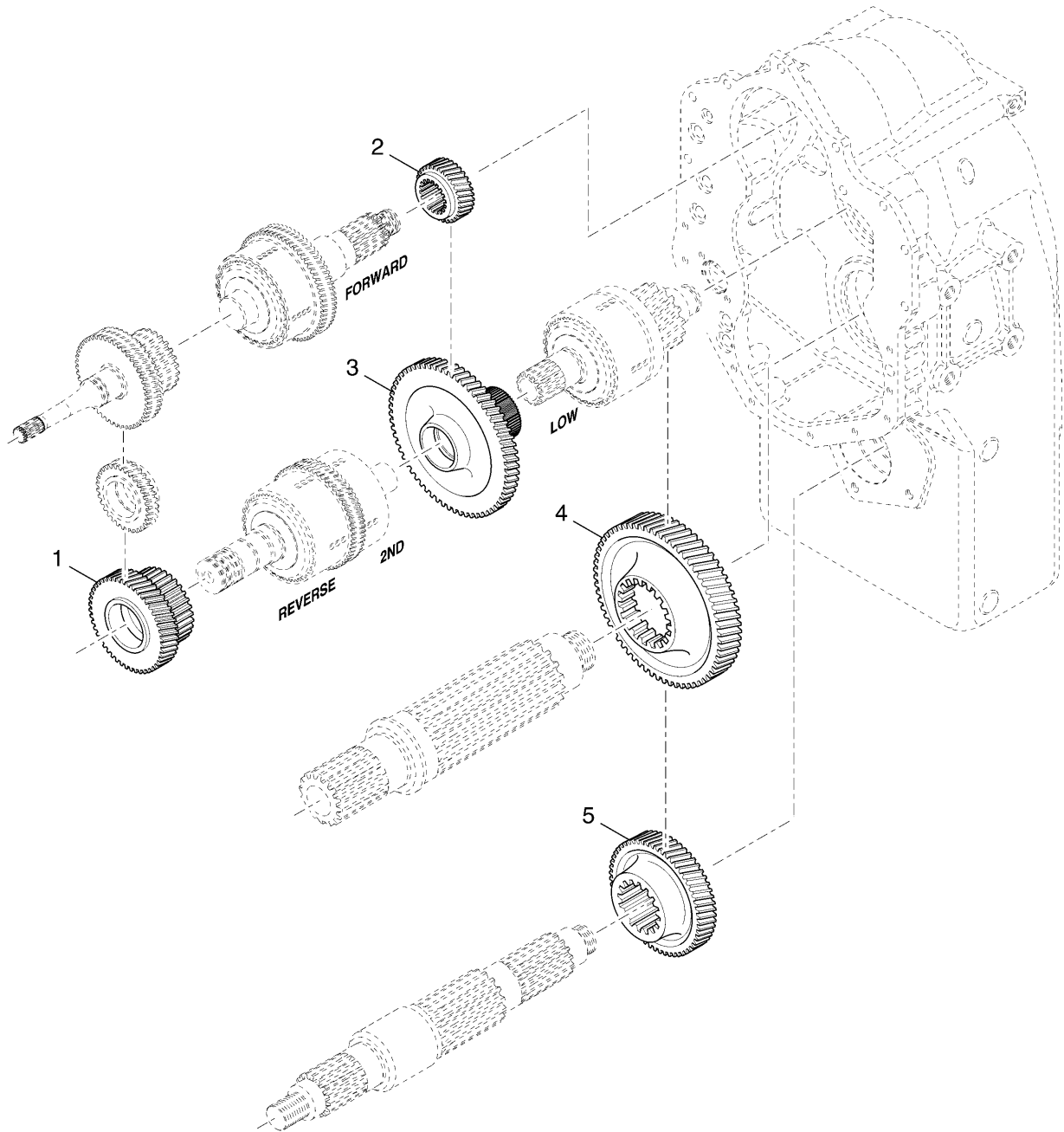
T20000
GROUP-TORQUE CONVERTER ASSEMBLY

<u>Item</u>	<u>Qty</u>	<u>Part Number</u>	<u>%</u>	<u>Description</u>
1	1	4205110	E	ASSY-TORQUE CONVERTER 1204F
2	1	238391	D	BEARING-IMPELLER HUB GEAR
3	1	5JM45	C	RING-EXTERNAL SNAP
4	1	223015		PLUG-TORQUE CONVERTER
5	1	60K30114	B	"O" RING-TORQUE CONVERTER PLUG
6	1	246354	C	RING-SNAP
7	2	4205114	C	RING-TURBINE RETAINING

N.S.S. - Not Sold Separately
N.I. - Not Illustrated
% - Part Stock Recommendation

T20000

GEAR GROUP



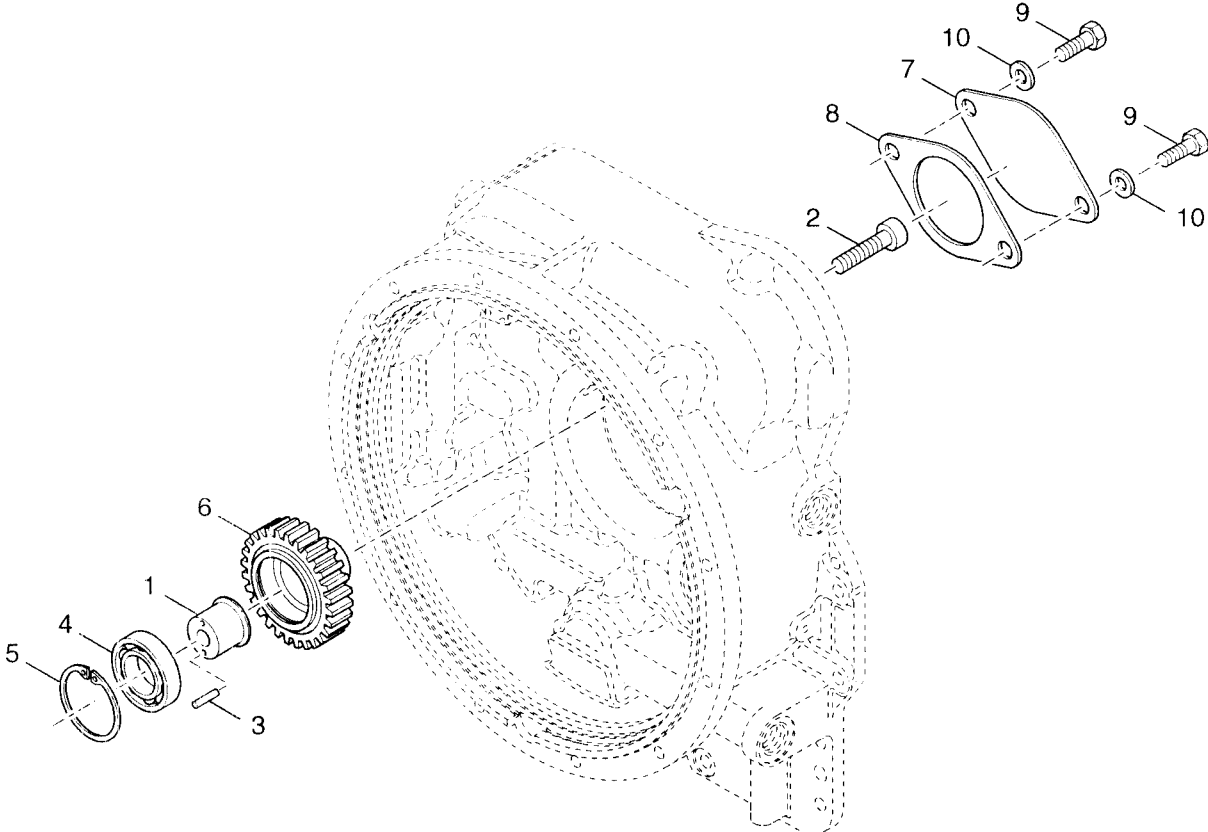
Date : 22-AUG-12
Revised :
MODEL : 4501235

T20000
GROUP-GEAR

<u>Item</u>	<u>Qty</u>	<u>Part Number</u>	<u>%</u>	<u>Description</u>	
1	1	4205115	D	GEAR-REVERSE CLUTCH	43T
2	1	4205225	E	GEAR-1ST DRIVE	29T
3	1	4205227	D	GEAR-LOW CLUTCH	63T
4	1	4205118	E	GEAR-IDLER	51T
5	1	4205229	E	GEAR-OUTPUT	41T

N.S.S. - Not Sold Separately
N.I. - Not Illustrated
% - Part Stock Recommendation

T20000
GROUP AUXILIARY PUMP DRIVE



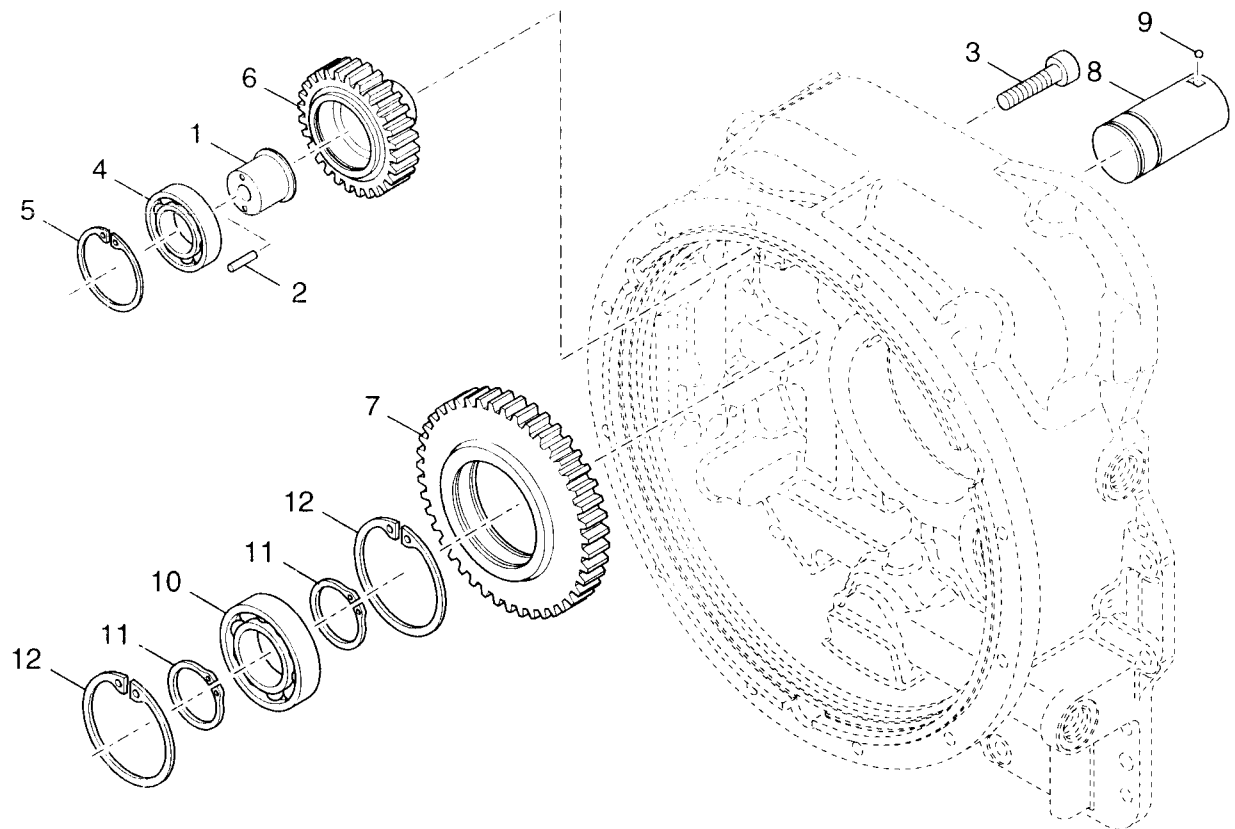
Date : 22-AUG-12
Revised :
MODEL : 4501195

T20000
GROUP-PUMP DRIVE SAE B AUXILIARY

<u>Item</u>	<u>Qty</u>	<u>Part Number</u>	<u>%</u>	<u>Description</u>	
1	1	4205121	D	SUPPORT-PUMP DRIVE BEARING	
2	1	73G828		SCREW-BEARING SUPPORT	
3	1	4205122	C	PIN-BEARING SUPPORT	
4	1	225953	C	BEARING-BALL	
5	1	223878	C	RING-DRIVE GEAR BEARING RETAINING	
6	1	4205123	D	GEAR-AUX PUMP DRIVE	37T
7	1	3614642	E	COVER-PUMP MOUNTING PERMANENT	
8	1	4205272	B	GASKET-PUMP MOUNTING	
9	2	1C816		SCREW-PUMP MOUNTING PERMANENT COVER	
10	2	4E8		LOCKWASHER-PUMP COVER SCREW	

N.S.S. - Not Sold Separately
N.I. - Not Illustrated
% - Part Stock Recommendation

T20000 GROUP PUMP DRIVE



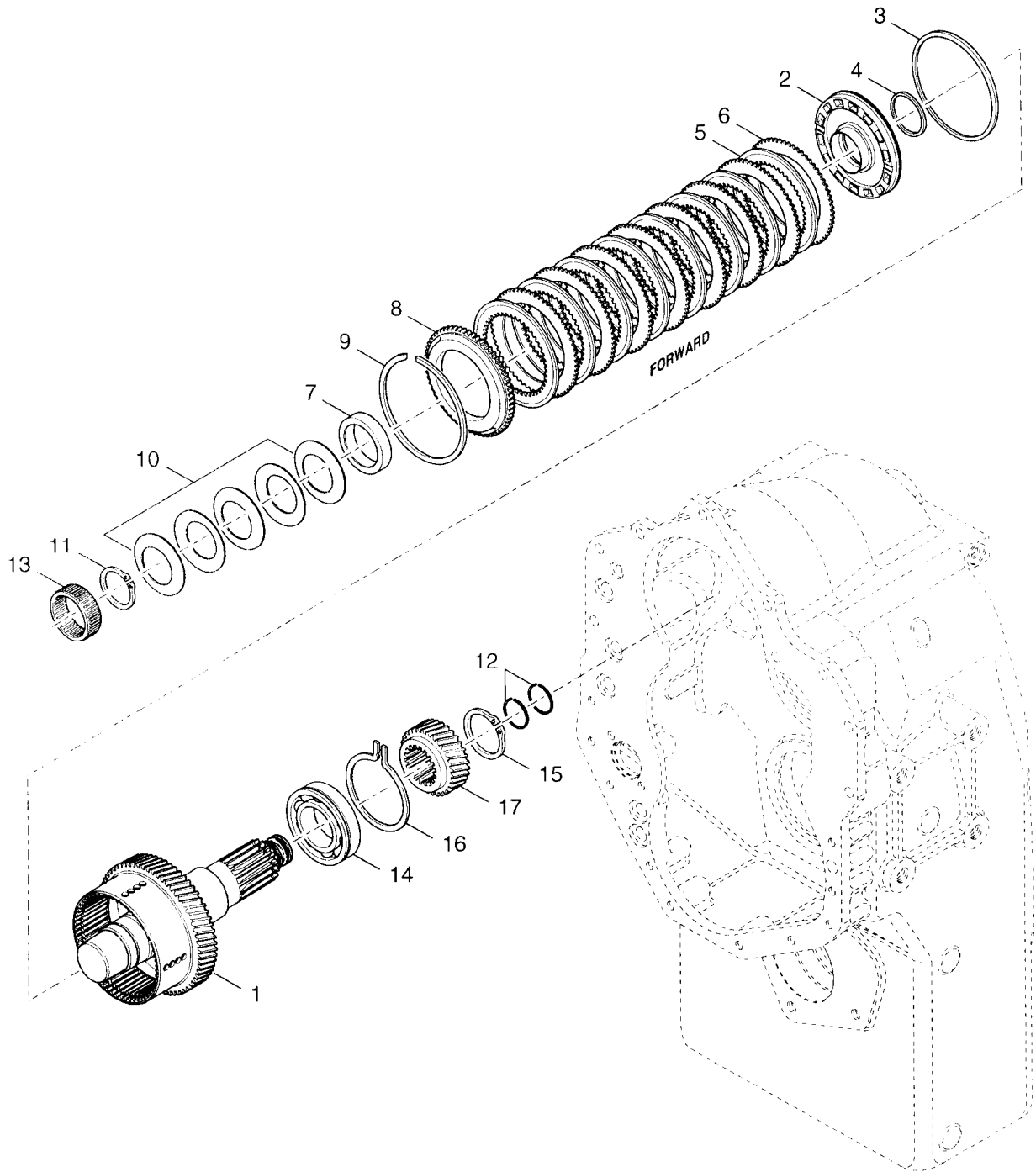
Date : 22-AUG-12
Revised :
MODEL : 4501196

T20000
GROUP-PUMP DRIVE CHARGING

<u>Item</u>	<u>Qty</u>	<u>Part Number</u>	<u>%</u>	<u>Description</u>	
1	1	4205121	D	SUPPORT-PUMP DRIVE BEARING	
2	1	4205122	C	PIN-BEARING SUPPORT	
3	1	73G828		SCREW-BEARING SUPPORT	
4	1	225953	C	BEARING-BALL	PUMP DR
5	1	223878	C	RING-DRIVE GEAR BEARING RETAINING	
6	1	4205124	D	GEAR-CHARGING PUMP DRIVE	-37T-
7	1	4205125	D	GEAR-PUMP DRIVE IDLER	-55T-
8	1	238215	D	SHAFT-IDLER GEAR STUB	
9	1	10J8		BALL-IDLER SHAFT LOCK	
10	1	235057	C	BEARING-BALL	PUMP ID
11	2	234908	C	RING-IDLER GEAR BEARING LOCATING	
12	2	223964	C	RING-IDLER GEAR BEARING RET.	

N.S.S. - Not Sold Separately
N.I. - Not Illustrated
% - Part Stock Recommendation

T20000 GROUP FORWARD SHAFT



Date : 22-AUG-12
Revised : D
MODEL : 4501454

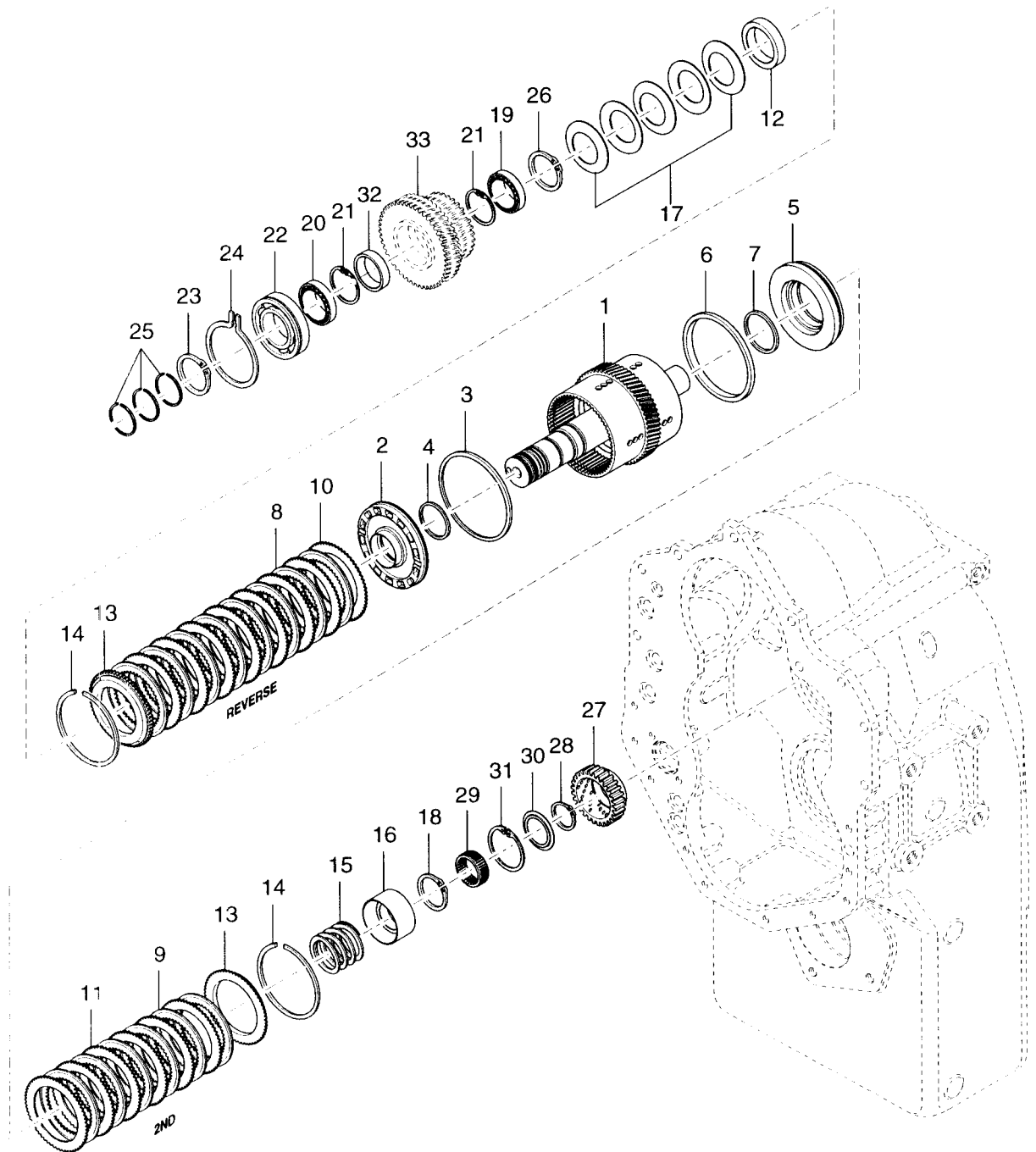
T20000
GROUP-FORWARD SHAFT

<u>Item</u>	<u>Qty</u>	<u>Part Number</u>	<u>%</u>	<u>Description</u>
1	1	4209369	E	ASSY-FWD SHAFT, DRUM & PLUG
2	1	4204050	D	ASSY-CLUTCH PISTON AND SEALS-INCL.ITEMS 3 & 4
3	1	237032	B	SEAL-CLUTCH PISTON - OUTER - PART OF ITEM 2
4	1	234113	B	SEAL-CLUTCH PISTON - INNER - PART OF ITEM 2
5	8	237016	C	DISC-CLUTCH INNER
6	8	234109	C	DISC-CLUTCH OUTER
7	1	237442		SPACER-PISTON RETURN SPRING
8	1	4204253	C	END PLATE
9	1	234111	C	SNAP RING-BACKING PLATE
10	1	247656	D	ASSY-DISC SPRING - INCLUDING 5 WASHERS
11	1	237669	D	SNAP RING-SPRING RETAINING
12	2	4208098	B	PISTON-RING
13	1	235763	C	BEARING-FORWARD SHAFT PILOT
14	1	4205132	C	BEARING-BALL FWD SHAFT REA
15	1	238034	D	RING-GEAR RETAINING
16	1	4205133	D	RING-BEARING RETAINING
17				GEAR - 1ST DRIVE - SEE GEAR GROUP

N.S.S. - Not Sold Separately
N.I. - Not Illustrated
% - Part Stock Recommendation

T20000

REVERSE AND 2ND SHAFT GROUP



Date : 22-AUG-12
Revised : D
MODEL : 4501199

T20000
GROUP-REVERSE & 2ND SHAFT

<u>Item</u>	<u>Qty</u>	<u>Part Number</u>	<u>%</u>	<u>Description</u>
1	1	4209373	E	ASSY-REV & 2ND SHAFT, DRUM & PLUG
2	1	4204050	D	ASSY-CLUTCH PISTON AND SEALS-INCL.ITEMS 3 & 4
3	1	237032	B	SEAL-CLUTCH PISTON - OUTER -PART OF ITEM 2
4	1	234113	B	SEAL-CLUTCH PISTON - INNER - PART OF ITEM 2
5	1	4207175	B	ASSY-CL PISTON,BALL &SEALS-INCL.ITEMS 6 AND 7
6	1	237032	B	SEAL-CLUTCH PISTON - OUTER -PART OF ITEM 2
7	1	234113	B	SEAL-CLUTCH PISTON - INNER - PART OF ITEM 2
8	8	237016	C	DISC-CLUTCH INNER REV CLUTCH
9	6	237016	C	DISC-CLUTCH INNER 2ND CLUTCH
10	8	234109	C	DISC-CLUTCH OUTER REV CLUTCH
11	6	234109	C	DISC-CLUTCH OUTER 2ND CLUTCH
12	1	237442		SPACER-PISTON RETURN SPRING REV CLUTCH
13	2	4204253	C	END PLATE
14	2	234111	C	SNAP RING-BACKING PLATE
15	1	235960	D	SPRING-PISTON RETURN 2ND CLUTCH
16	1	235959	E	RETAINER-SPRING 2ND CLUTCH
17	1	247656	D	ASSY-DISC SPRING - INCLUDING 5 WASHERS
18	1	234350	D	SNAP RING-SPRING RETAINING 2ND CLUTCH
19	1	230829	C	BEARING-CLUTCH DRIVEN GEAR
20	1	233389	C	BEARING-CLUTCH DRIVEN GEAR
21	2	234141	D	RING-REV CLUTCH GEAR BEARING
22	1	241606	C	BEARING-BALL FRONT
23	1	247949	D	RING-FRONT BEARING RETAINING
24	1	230889	D	SNAP RING-FRONT BEARING
25	3	4208098	B	PISTON-RING

N.S.S. - Not Sold Separately
N.I. - Not Illustrated
% - Part Stock Recommendation

Date : 22-AUG-12
Revised : D
MODEL : 4501199

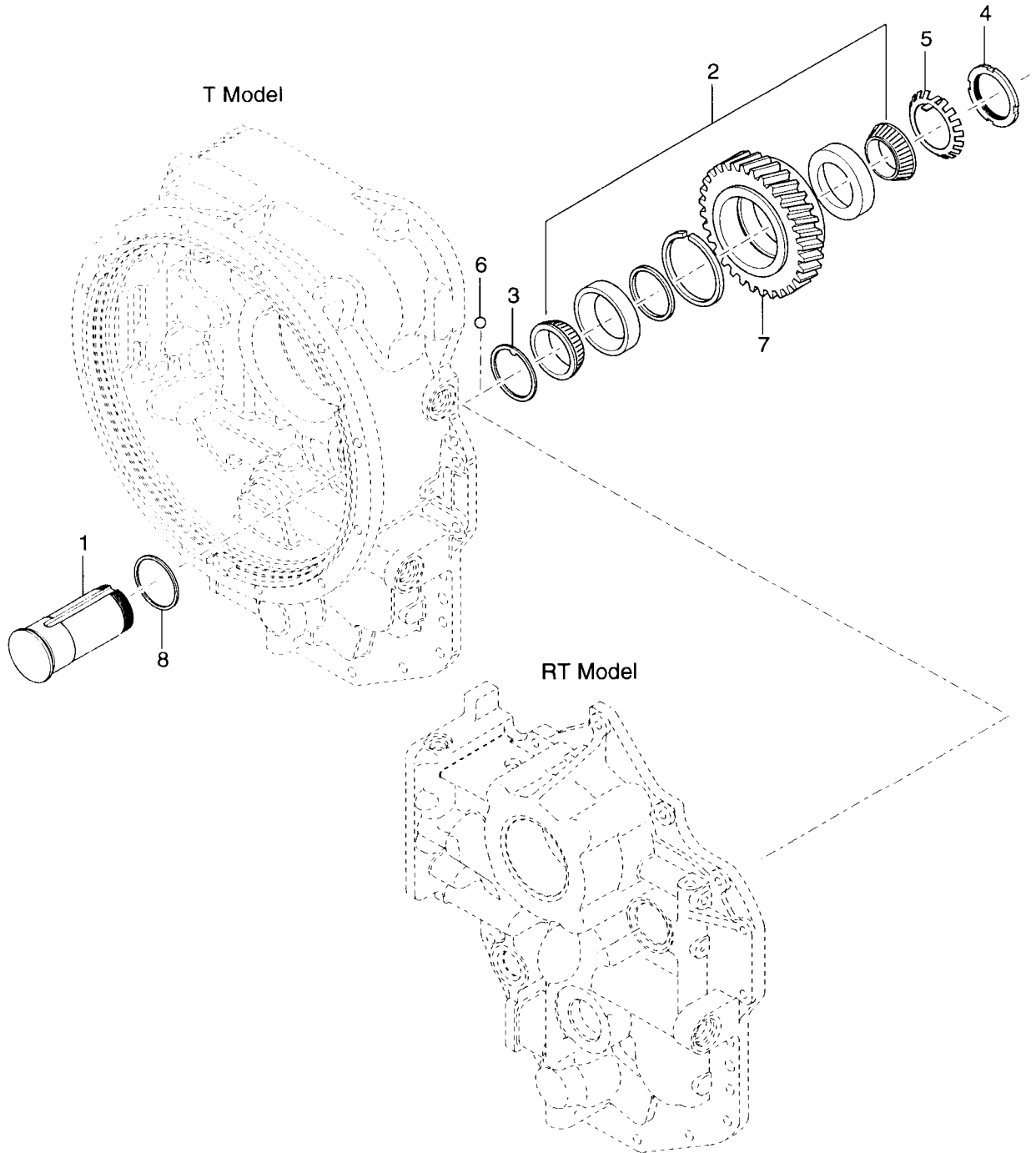
T20000
GROUP-REVERSE & 2ND SHAFT

<u>Item</u>	<u>Qty</u>	<u>Part Number</u>	<u>%</u>	<u>Description</u>
26	1	237669	D	SNAP RING-SPRING RETAINING
27	1	4205140	E	HUB-2ND CLUTCH
28	1	234350	D	RING-2ND CLUTCH DISC HUB RETAINING
29	1	233066	C	BEARING-NEEDLE REAR
30	1	241313		RETAINER-RETAINING RING
31	1	241603	C	RING-RETAINER LOCATING
32	1	4205141		SPACER-REVERSE CLUTCH GEAR
33				GEAR - REVERSE CLUTCH - SEE GEAR GROUP

N.S.S. - Not Sold Separately
N.I. - Not Illustrated
% - Part Stock Recommendation

T20000

REVERSE IDLER GROUP



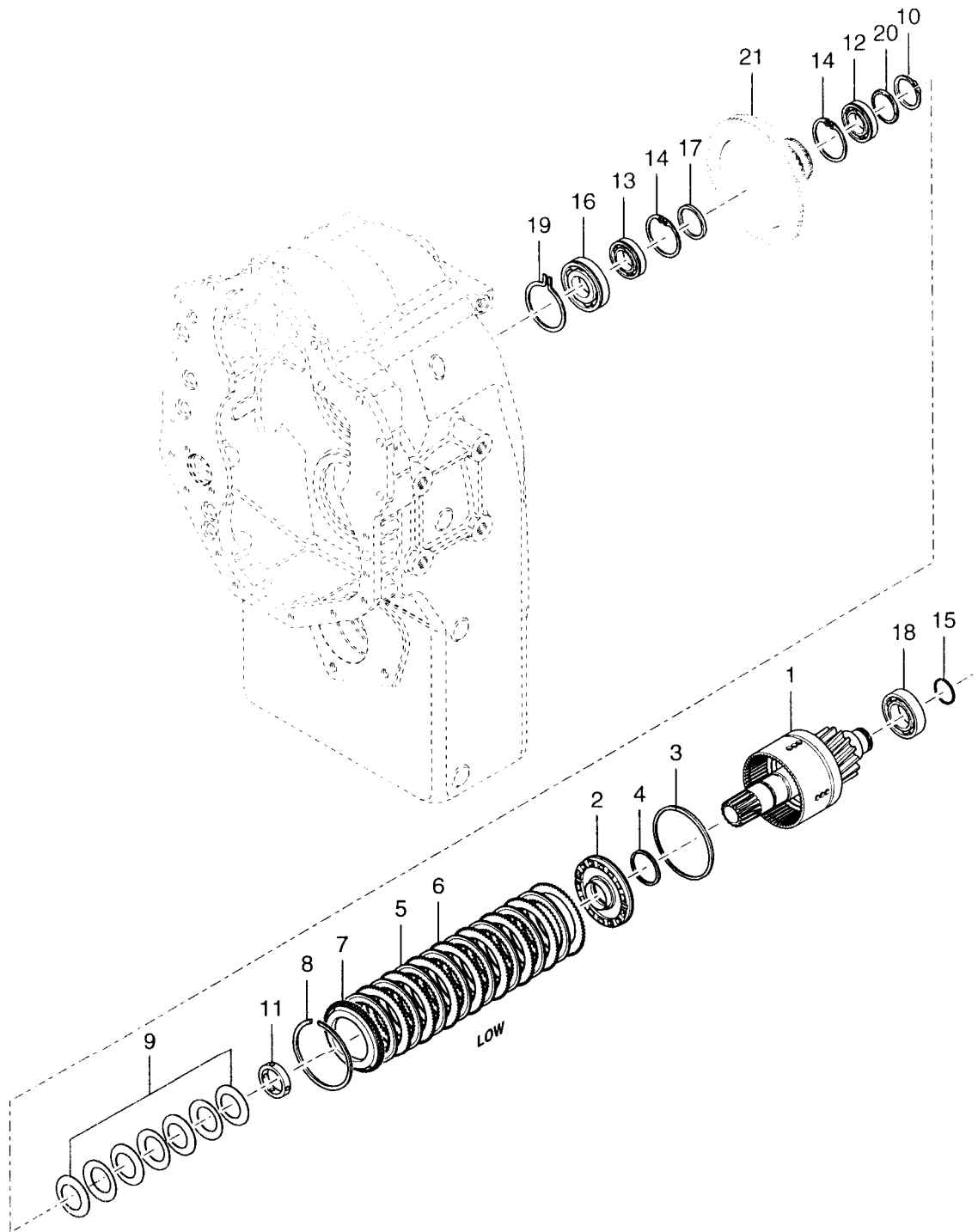
Date : 22-AUG-12
Revised :
MODEL : 4501198

T20000
GROUP-REVERSE IDLER

<u>Item</u>	<u>Qty</u>	<u>Part Number</u>	<u>%</u>	<u>Description</u>	
1	1	4205237	D	SHAFT-REVERSE IDLER	
2	1	247664	C	ASSY-REVERSE IDLER GEAR BEARING	
3	1	4205134		WASHER	
4	1	24H9		NUT-BEARING RETAINING	
5	1	26H9	C	WASHER-BEARING RETAINING	
6	1	10J10		LOCKBALL-IDLER SHAFT	
7	1	4205179	D	GEAR-REVERSE IDLER	32T
8	1	76K223	B	"O" RING-IDLER SHAFT	

N.S.S. - Not Sold Separately
N.I. - Not Illustrated
% - Part Stock Recommendation

T20000 GROUP LOW SPEED SHAFT



Date : 22-AUG-12
Revised : B
MODEL : 4501200

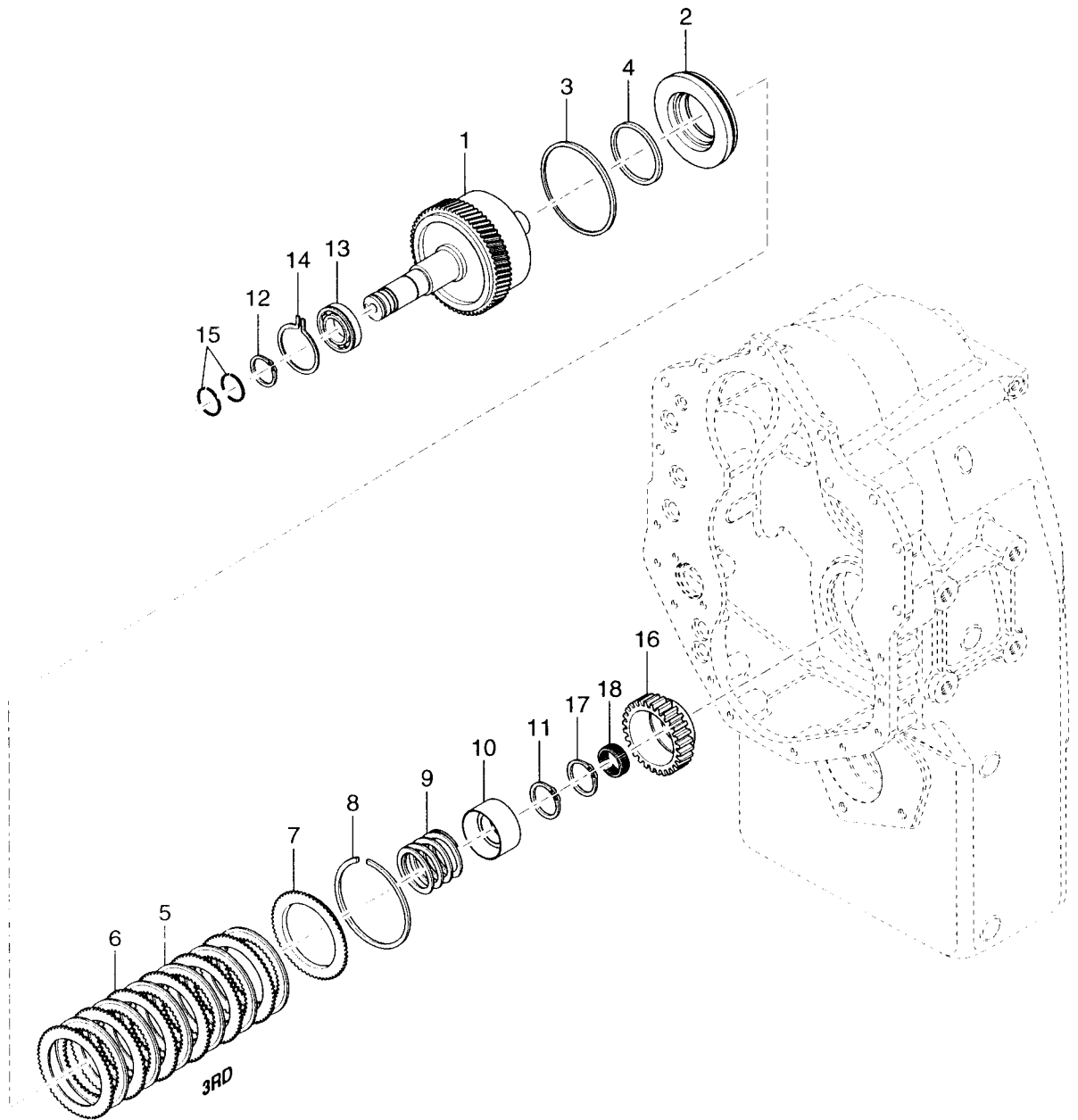
T20000
GROUP-LOW SPEED SHAFT

<u>Item</u>	<u>Qty</u>	<u>Part Number</u>	<u>%</u>	<u>Description</u>
1	1	4205142	E	ASSY-LOW SHAFT,HUB,DRUM & BLEED VALVE
2	1	4204050	D	ASSY-CLUTCH PISTON AND SEALS-INCL.ITEMS 3 & 4
3	1	237032	B	SEAL-CLUTCH PISTON - OUTER - PART OF ITEM 2
4	1	234113	B	SEAL-CLUTCH PISTON - INNER - PART OF ITEM 2
5	8	234336	C	DISC-CLUTCH INNER
6	8	234109	C	DISC-CLUTCH OUTER
7	1	4204253	C	END PLATE
8	1	234111	C	RING-BACKING PLATE RETAINING
9	1	247659	D	ASSY-DISC SPRING - INCLUDING 7 WASHERS
10	1	234350	D	SNAP RING-SPRING RETAINER
11	1	241317		SPACER-BELLEVILLE WASHER
12	1	230885	C	BEARING-LOW SPEED GEAR
13	1	241818	C	FRONT-LOW SPEED GEAR BEARING
14	2	223881	C	RING-LOW SPEED GEAR BRG LOCATING
15	1	250215	B	RING-LOW SHAFT PISTON
16	1	4205105	C	BEARING-BALL FRONT
17	1	241259	D	SPACER-LOW SPEED GEAR BEARING
18	1	4204258	C	BEARING-BALL REAR
19	1	234229	C	SNAP RING EXTERNAL-SPECIAL
20	1	248095		RETAINER-BELLEVILLE WASHER
21				GEAR - LOW CLUTCH - SEE GEAR GROUP

N.S.S. - Not Sold Separately
N.I. - Not Illustrated
% - Part Stock Recommendation

T20000

3RD SHAFT GROUP



Date : 22-AUG-12
Revised : D
MODEL : 4501201

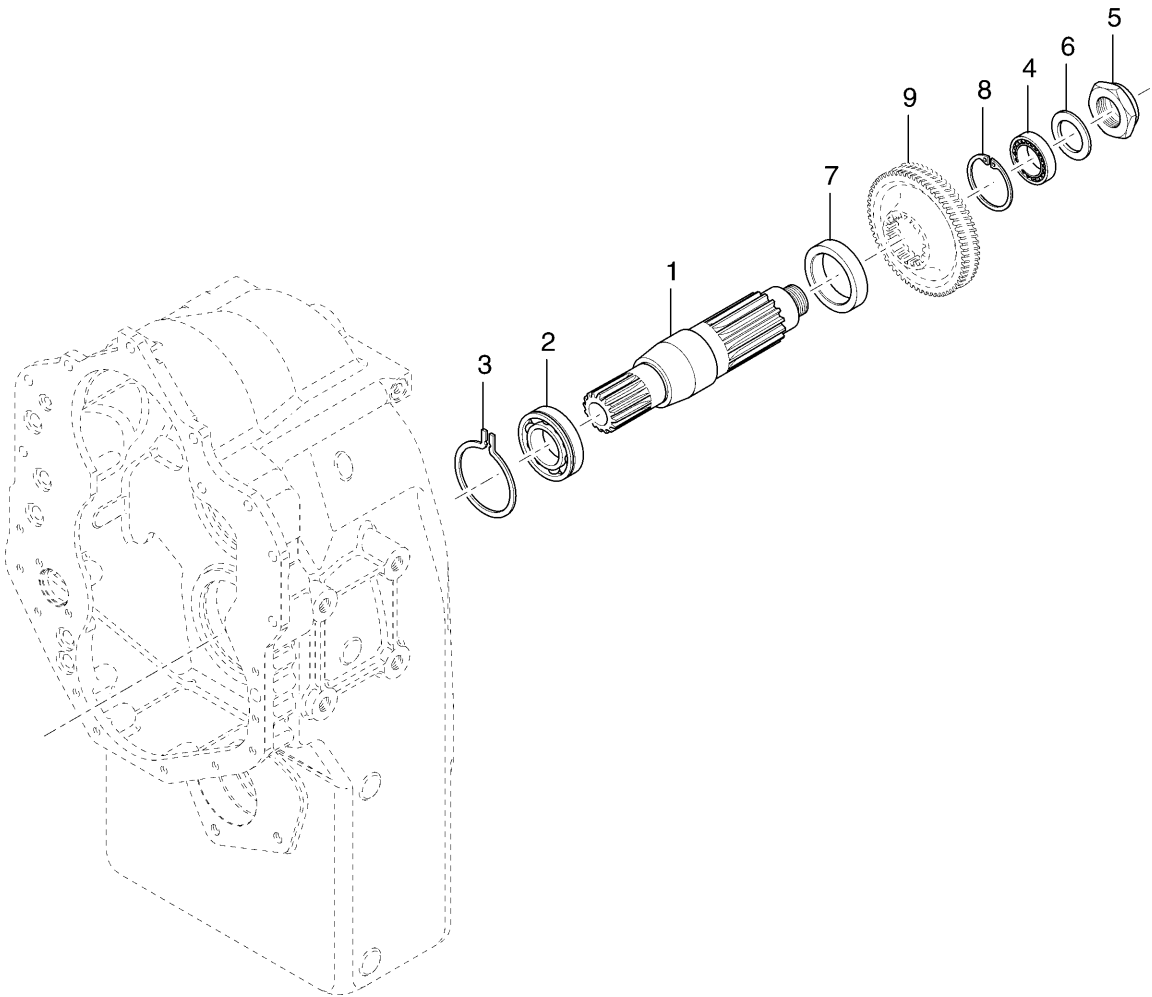
T20000
GROUP-3RD SHAFT

<u>Item</u>	<u>Qty</u>	<u>Part Number</u>	<u>%</u>	<u>Description</u>	
1	1	4209376	E	ASSY-3RD SHAFT,DRUM & PLUG	
2	1	4207175	B	ASSY-CL PISTON,BALL,SEAT&SEALS-INCL.ITEMS 3&4	
3	1	237032	B	SEAL-CLUTCH PISTON - OUTER - PART OF ITEM 2	
4	1	234113	B	SEAL-CLUTCH PISTON - INNER - PART OF ITEM 2	
5	6	237016	C	DISC-CLUTCH INNER	
6	6	234109	C	DISC-CLUTCH OUTER	
7	1	4204253	C	END PLATE	
8	1	234111	C	SNAP RING-BACKING PLATE	
9	1	235960	D	SPRING-PISTON RETURN	3RD CLUTC
10	1	235959	E	RETAINER-SPRING	3RD CLUTC
11	1	234350	D	SNAP RING-SPRING RETAINING	3RD CLUTC
12	1	247949	D	RING-FRONT BEARING RETAINING	
13	1	241606	C	BEARING-BALL	FRONT
14	1	230889	D	SNAP RING-FRONT BEARING	
15	2	4208098	B	PISTON-RING	
16	1	4203199	E	HUB-3RD CLUTCH	
17	1	234347	D	RING-3RD CLUTCH DISC HUB RETAINING	
18	1	233066	C	BEARING-NEEDLE	REAR

N.S.S. - Not Sold Separately
N.I. - Not Illustrated
% - Part Stock Recommendation

T20000

IDLER SHAFT GROUP



Date : 22-AUG-12
Revised : A
MODEL : 4501227

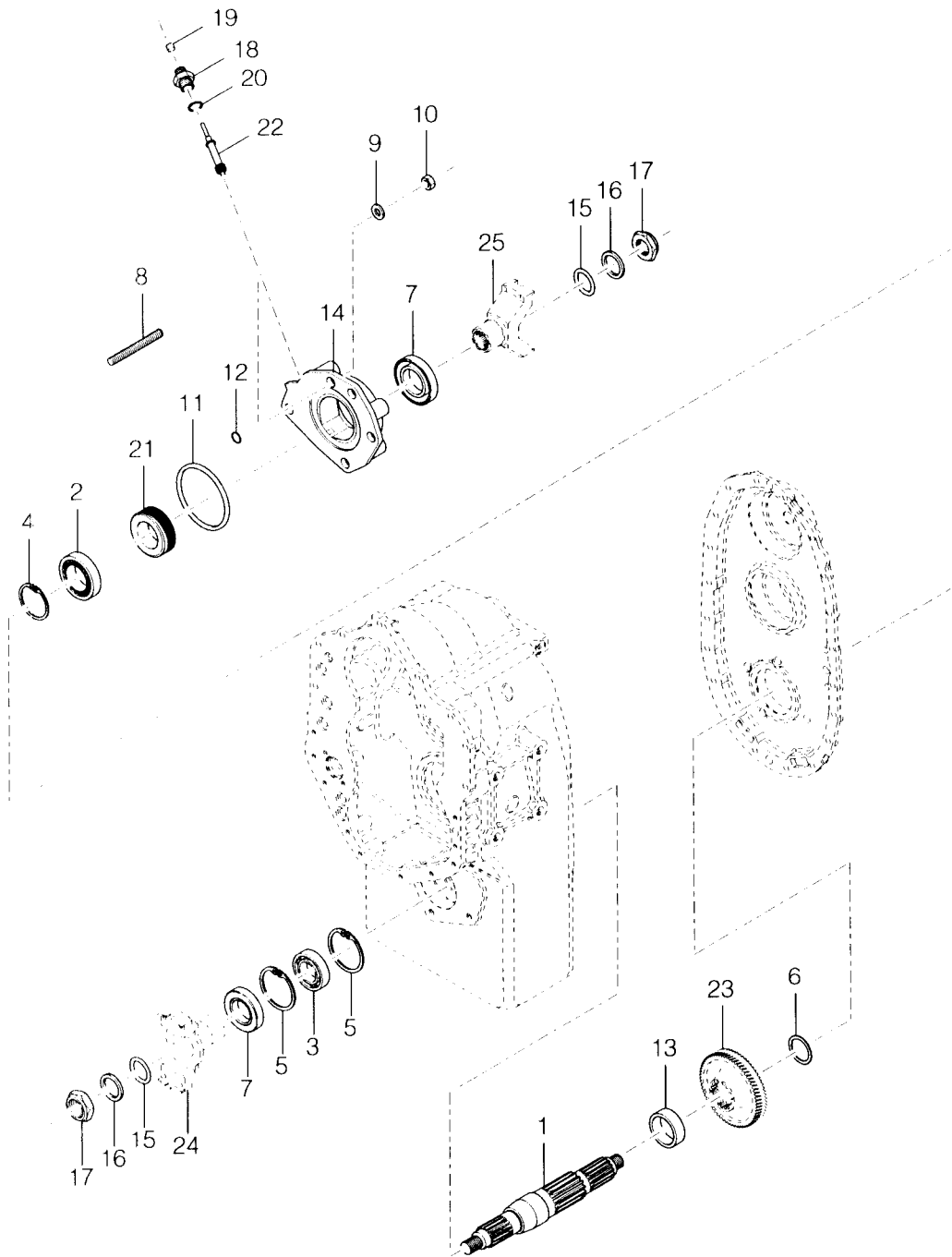
T20000
GROUP-IDLER SHAFT

<u>Item</u>	<u>Qty</u>	<u>Part Number</u>	<u>%</u>	<u>Description</u>	
1	1	4205207	E	SHAFT-IDLER	
2	1	4205105	C	BEARING-BALL	FRONT
3	1	234229	C	SNAP RING-BEARING	FRONT
4	1	4205151	C	BEARING-ROLLER	REAR
5	1	222960	C	NUT-BEARING	REAR
6	1	222179		WASHER-BEARING NUT	REAR
7	1	235910	D	SPACER-OUTPUT SHAFT GEAR	
8	1	214953	D	SNAP RING	
9				GEAR - IDLER - SEE GEAR GROUP	
	1	219430	E	COVER-PUMP ADAPTOR	N.I.
	1	246684	B	GASKET-SHIPPING COVER	N.I.
	2	1C612		CAPSCREW	N.I.
	2	4E6		LOCKWASHER	N.I.

N.S.S. - Not Sold Separately
N.I. - Not Illustrated
% - Part Stock Recommendation

T20000

OUTPUT SHAFT GROUP



Date : 22-AUG-12
Revised : C
MODEL : 4501416

T20000
GROUP-OUTPUT SHAFT

<u>Item</u>	<u>Qty</u>	<u>Part Number</u>	<u>%</u>	<u>Description</u>
1	1	4205210	E	SHAFT-OUTPUT
2	1	4205153	C	BEARING-OUTPUT SHAFT REAR
3	1	244093	C	BEARING-OUTPUT SHAFT FRONT
4	1	7JM90	C	RING-OUTPUT SHAFT REAR
5	2	223901	D	RING-OUTPUT SHAFT FRONT BRG RET.
6	1	234230	D	WASHER-OUTPUT SHAFT REAR BEARING
7	2	4205154	B	SEAL-OUTPUT SHAFT
8	4	238903		STUD-BEARING CAP
9	4	4E9		LOCKWASHER-BEARING CAP SCREW
10	4	62D9		NUT-STUD
11	1	60K40328	B	"O" RING-OUTPUT SHAFT REAR BEARING CAP
12	1	60K30022	B	"O" RING-OUTPUT SHAFT REAR BEARING CAP
13	1	235910	D	SPACER-GEAR
14	1	4205204	E	CAP-OUTPUT SHAFT REAR BEARING
15	2	60K60116	B	"O" RING-FLANGE
16	2	222179		WASHER-FLANGE
17	2	222960	C	NUT-FLANGE
18	1	236678	C	NUT-SPEEDO TUBE
19	1	241894	B	SEAL-SPEEDO NUT
20	1	91F8	B	"O" RING-SPEEDO TUBE NUT
21	1	237887	E	GEAR-SPEEDOMETER DRIVE 47T
22	1	237885	E	GEAR-SPEEDOMETER DRIVEN 12T
23				GEAR - OUTPUT - SEE GEAR GROUP
24				FLANGE - FRONT - SEE FRONT PAGE
25				FLANGE - REAR - SEE FRONT PAGE

N.S.S. - Not Sold Separately
N.I. - Not Illustrated
% - Part Stock Recommendation

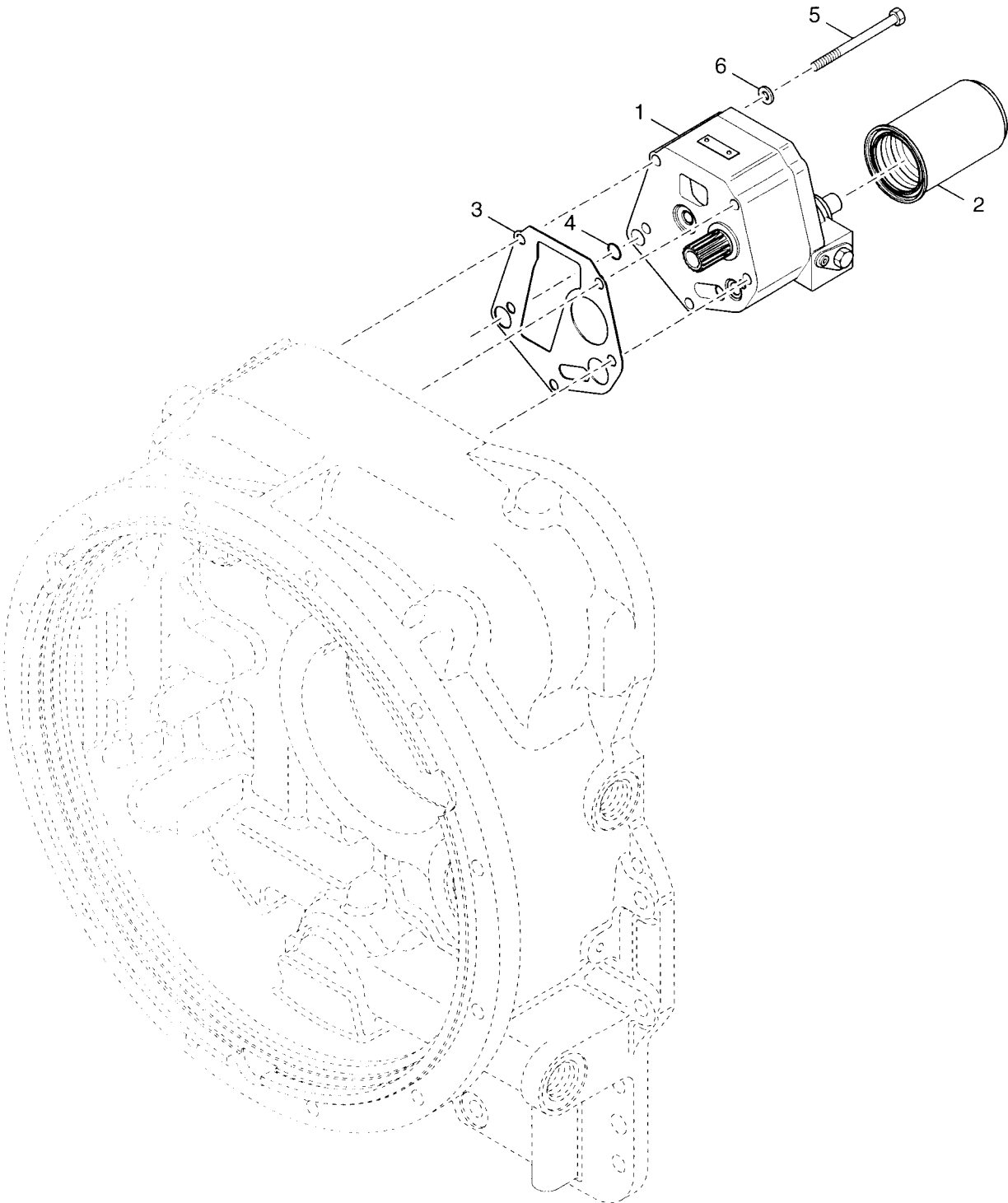
Date : 22-AUG-12
Revised : C
MODEL : 4501416

T20000
GROUP-OUTPUT SHAFT

<u>Item</u>	<u>Qty</u>	<u>Part Number</u>	<u>%</u>	<u>Description</u>
-------------	------------	--------------------	----------	--------------------

N.S.S. - Not Sold Separately
N.I. - Not Illustrated
% - Part Stock Recommendation

T20000
GROUP CHARGING PUMP & FILTER



Date : 22-AUG-12
Revised :
MODEL : 4501704

T20000
GROUP-CHARGING PUMP FILTER 14.5 GPM

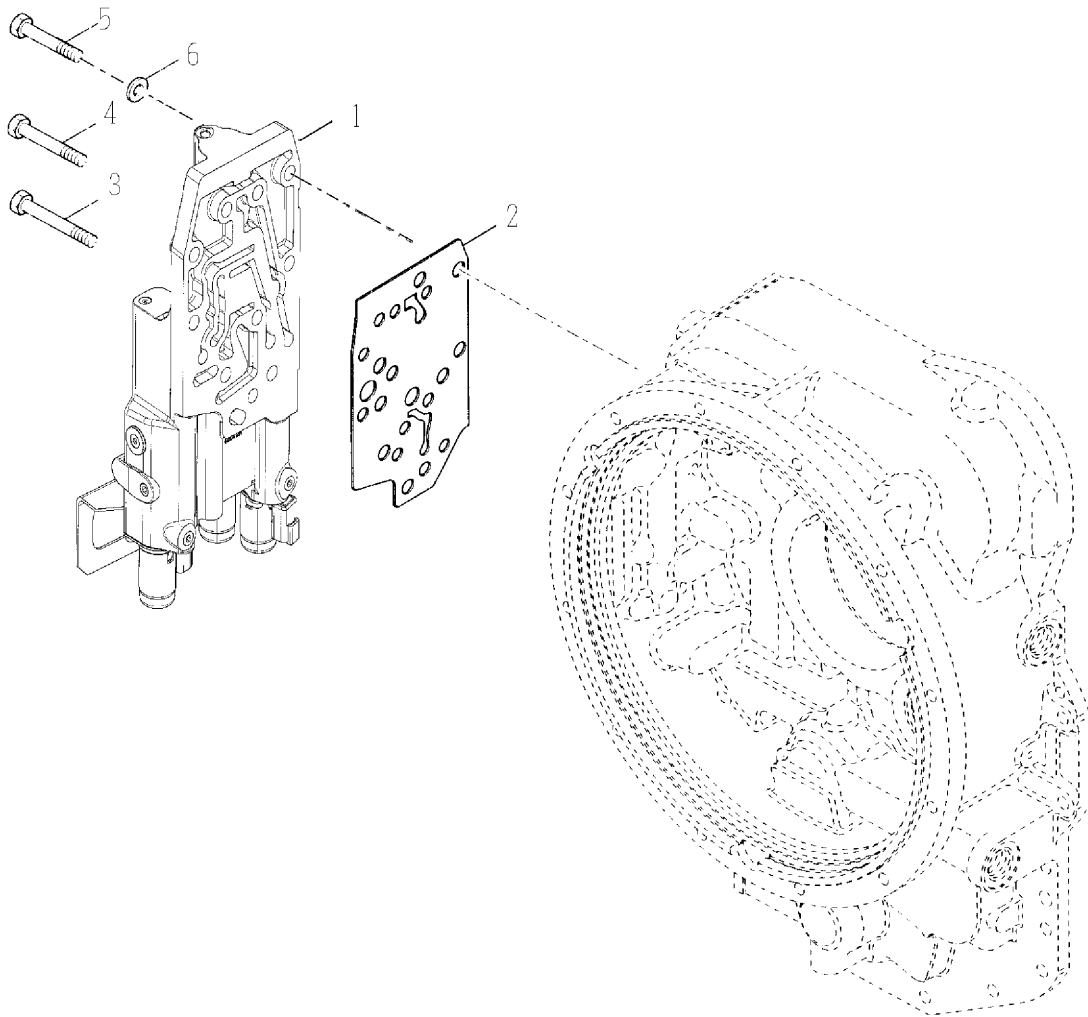
<u>Item</u>	<u>Qty</u>	<u>Part Number</u>	<u>%</u>	<u>Description</u>
1	1	4205949	D	PUMP-CHARGING STANDARD (240 - 280 PSI)
2	1	247050	C	ASSEMBLY-HYDRAULIC SPIN ON FILTER
3	1	235283	B	GASKET-PUMP ASSEMBLY TO CONV. HSG.
4	1	60K30018	B	"O" RING
5	1	1C776		SCREW-PUMP MOUNTING
5A	4	1C772		SCREW-PUMP MOUNTING
6	5	4E7		LOCKWASHER-PUMP MOUNTING SCREW

N.S.S. - Not Sold Separately
N.I. - Not Illustrated
% - Part Stock Recommendation

T20000

GROUP-VALVE 3 SPD

W/O INCHING, W/O DECLUTCH AND W/O MODULATION



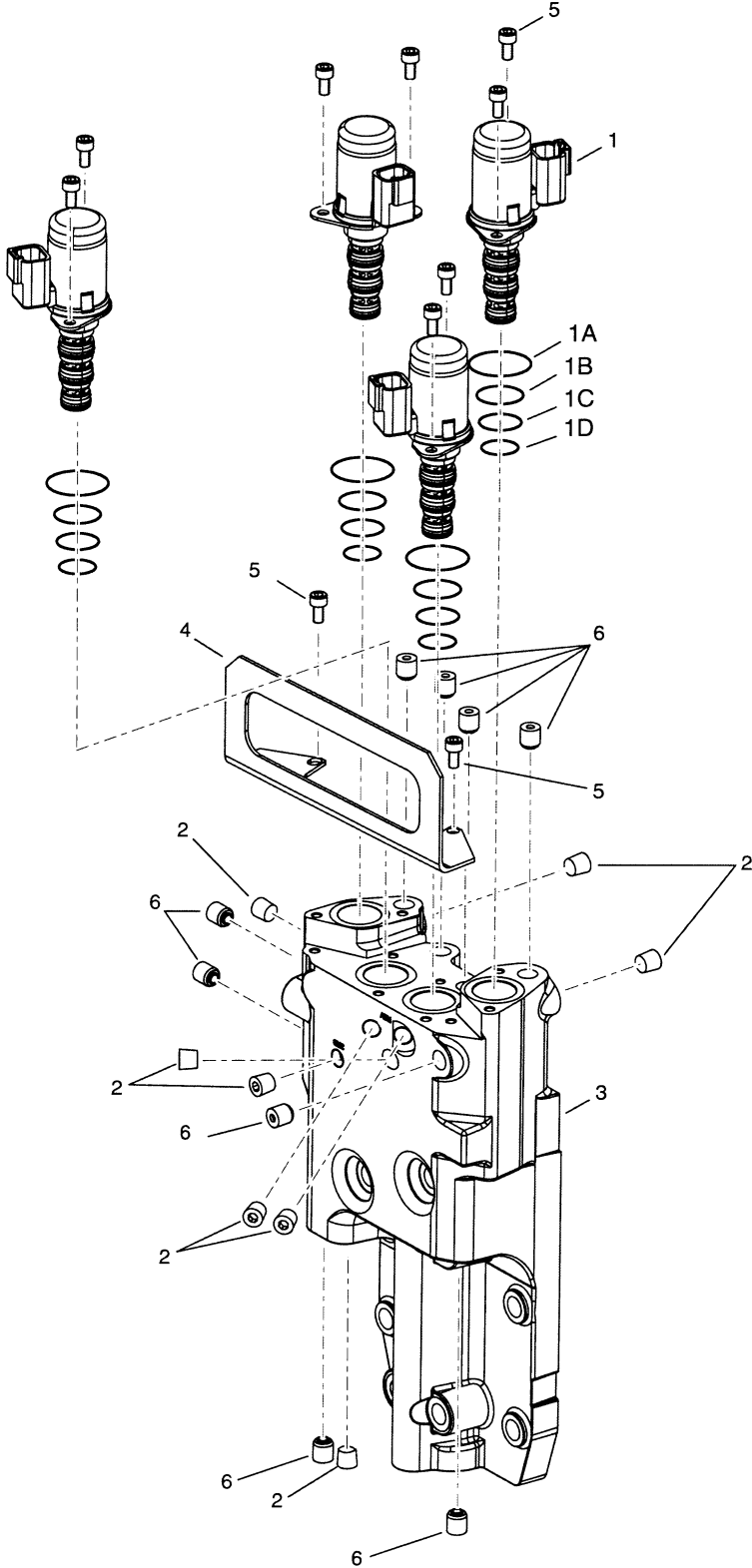
Date : 22-AUG-12
Revised : A
MODEL : 4504027

T20000
GROUP-VALVE 3 SPEED

<u>Item</u>	<u>Qty</u>	<u>Part Number</u>	<u>%</u>	<u>Description</u>	
1	1	4211199	E	ASSY-VALVE - DEUTSCH 24V order partnumber 4211199 to service body plug expansions are part of assembly 4211199	
2	1	4211196	B	GASKET	
3	4	1C624		CAPSCREW	
4	3	1C636		CAPSCREW	
5	2	1C648		CAPSCREW	
6	9	4E6		LOCKWASHER	
	1	4213159		SHIPPING COVER DROPIN SOLENOIDS	N.I.

N.S.S. - Not Sold Separately
N.I. - Not Illustrated
% - Part Stock Recommendation

T20000
ASSY-VALVE 3SP
W/O INCHING & W/O DECLUTCH



Date : 22-AUG-12
Revised :
MODEL : 4211199

T20000
ASSY-VALVE - DEUTSCH 24V

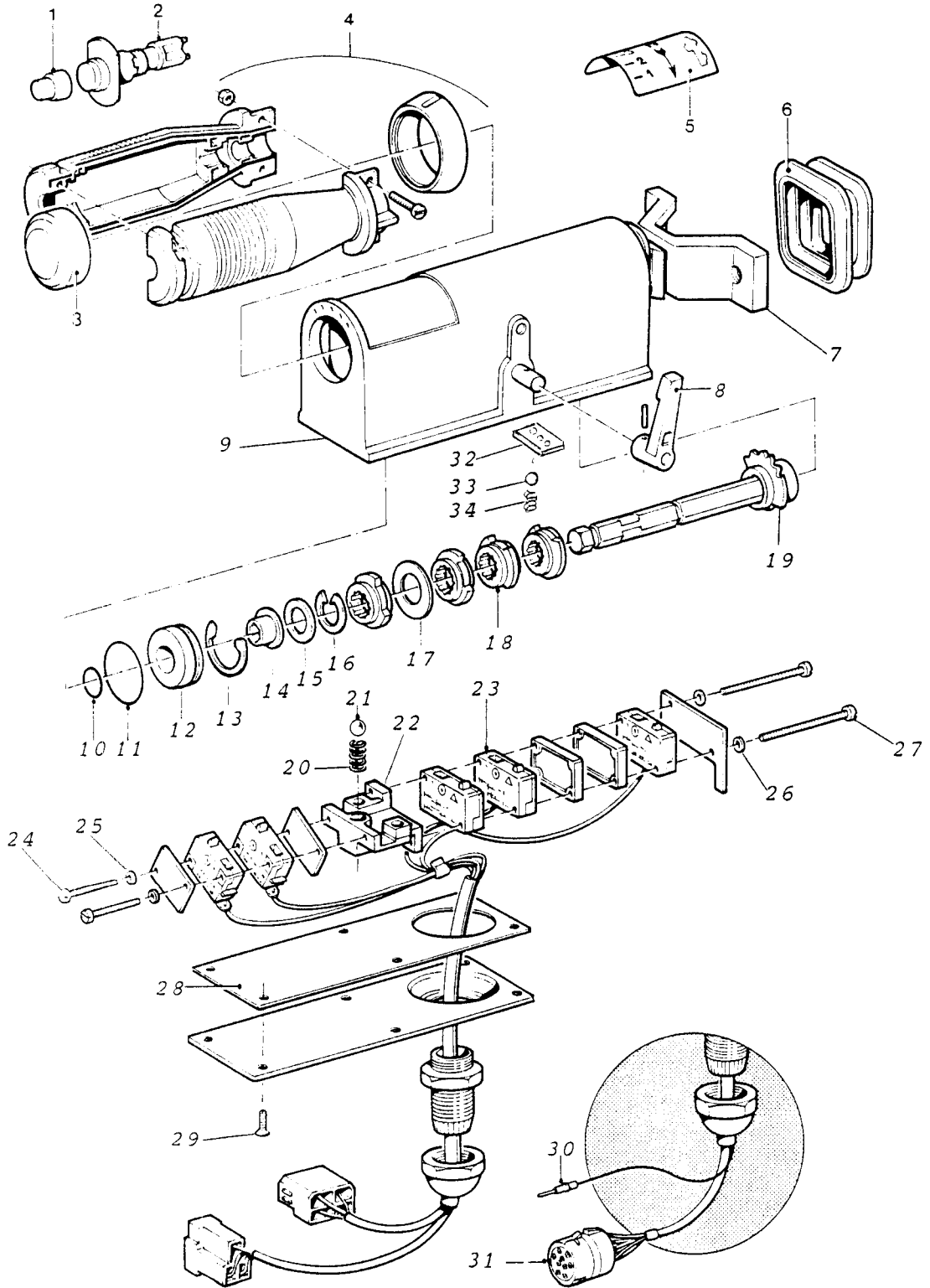
<u>Item</u>	<u>Qty</u>	<u>Part Number</u>	<u>%</u>	<u>Description</u>
1	4	4211145	D	SOLENOID-DEUTSCH 24V-INCL.ITEMS 1A,1B,1C & 1D
1A	4	4210660	B	O-RING 21.5X1.5 MM VITON - PART OF ITEM 1
1B	4	4210661	B	O-RING 15.1X1.60 MM VITON - PART OF ITEM 1
1C	4	4210662	B	O-RING 14.1X1.60 MM VITON - PART OF ITEM 1
1D	4	4210663	B	O-RING 12.1X1.60 MM VITON - PART OF ITEM 1
2	8	239244		PLUG
3	1	N.S.S.		BODY order partnumber 4211199 to service body
4	1	4211435	D	COVER-SOLENOID
5	10	1GM510		CAPSCREW M5X10
6	9	N.S.S.		PLUG-EXPANSION DIA 10 plug expansions are part of assembly 4211199

N.S.S. - Not Sold Separately
N.I. - Not Illustrated
% - Part Stock Recommendation



SPICER OFF-HIGHWAY

ELECTRIC CAB CONTROL GRIP TYPE



Date : 22-AUG-12
Revised :
MODEL : 4200673

GRIP TYPE CAB CONTROL

<u>Item</u>	<u>Qty</u>	<u>Part Number</u>	<u>%</u>	<u>Description</u>
1				Not Used On This Model
2				Not Used On This Model
3	1	4200825		CAP-HANDGRIP
4	1	4200962		ASSY-HANDGRIP
5	1	4200951		STICKER-SHIFT IDENT
6	1	4200950		GAITER-RUBBER
7	1	4202868		CLAMP
8	1	4200949		LEVER-NEUTRAL LOCK
9	1	4202867		HOUSING
10				Not Used On This Model
11				Not Used On This Model
12	1	4202990		CAP
13	1	4202989		RING
14	1	4202988		SPACER
15	1	4202987		WASHER
16	1	4202986		RING
17	1	4202985		WASHER
18	4	4200965		CAM
19	1	4202983		SHAFT
20	1	4201607		SPRING
21	1	19JM60		BALL
22	1	4202998		BLOCK
23	5	4200948		MICROSWITCH
24	2	4202994		SCREW
25	2	4202995		WASHER

N.S.S. - Not Sold Separately
N.I. - Not Illustrated
% - Part Stock Recommendation

Date : 22-AUG-12
Revised :
MODEL : 4200673

GRIP TYPE CAB CONTROL

<u>Item</u>	<u>Qty</u>	<u>Part Number</u>	<u>%</u>	<u>Description</u>
26	2	4202995		WASHER
27	2	4202993		SCREW
28	1	4200961	B	GASKET
29	6	4202997		SCREW
30				Not Used On This Model
31				Not Used On This Model
32	1	4203001		PLATE-FWD & REV
33	1	4203000		BALL-FWD & REV
34	1	4202999		SPRING-FWD & REV

N.S.S. - Not Sold Separately
N.I. - Not Illustrated
% - Part Stock Recommendation



SPICER OFF-HIGHWAY

Technical Service Bulletin

N°. BEA 280 E

Month - Year : 03 - 00

Subject : T20000 Series Transmissions – drive plate kits

Reason for bulletin : Proper identification by bolt circle diameter

Models affected : T20000 Series Transmissions

Ref. : Installation sheet 814974

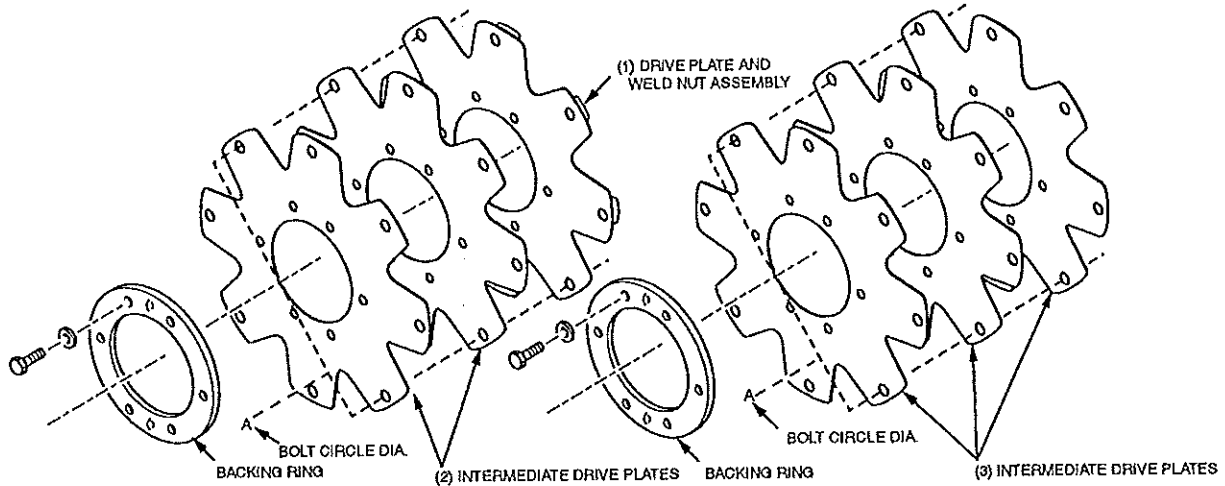
Please see attached two pages.

Additional copies of bulletin available upon request. Phone Spicer Off-Highway :
(704) 878-5850 (U.S.A.) – (39) 0464-580214 (Italy) – (32) 50-402442 (Belgium).

People Finding A Better Way

**T20000 SERIES TRANSMISSIONS
DRIVE PLATE KITS**

Measure the "A" dimension (bolt circle diameter) and order drive plate kit listed below. Note three (3) kits have two (2) intermediate drive plates and one (1) drive plate and weld nut assembly. Three (3) kits with three intermediate drive plates.



"A" Dimension (Bolt circle diameter)

- 11.380" (288.900 mm)diameter
Kit No.814978.
- 13.125" (333.38 mm)diameter
Kit No.814977.
- 13.500" (342.90 mm)diameter
Kit No.814975.

Each kit will include the following parts:

- 2 Intermediate drive plates.
- 1 Drive plate and weld nut assembly.
- 1 Backing ring.
- Mounting screws.
- 6 Lockwashers.
- 1 Instruction sheet.

"A" Dimension (Bolt circle diameter)

- 11.380" (288.900 mm)diameter
Kit No.814979.
- 13.125" (333.38 mm)diameter
Kit No.814980.
- 13.500" (342.90 mm)diameter
Kit No.814981.

Each kit will include the following parts:

- 3 Intermediate drive plates.
- 1 Backing ring.
- 6 Mounting screws.
- 6 Lockwashers.
- 1 Instruction sheet.

Position drive plate and weld nut assembly on torque converter assembly with weld nuts toward converter. Align intermediate drive plates and backing plate with holes in torque converter assembly.

NOTE

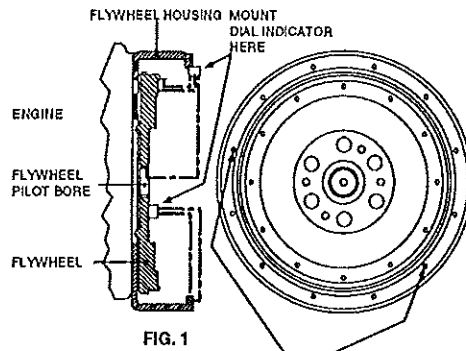


Two dimples 180° apart in backing ring must be out toward engine flywheel (hollow side facing torque converter assembly). Install cap screws and lockwashers. Tighten cap screws torque 40 - 50 Nm. (30 - 37 lb. ft.).

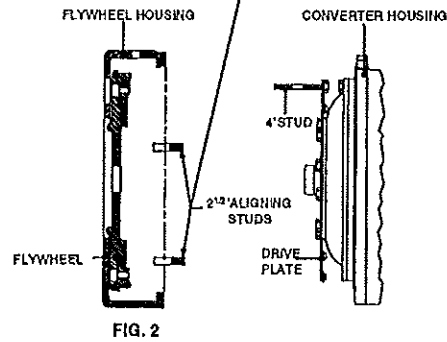


TRANSMISSION TO ENGINE INSTALLATION PROCEDURE

1. Remove all burrs from flywheel mounting face and nose pilot bore. Clean drive plate surface with solvent.
2. Check engine flywheel & housing for conformance to standard SAE No. 3 per SAE J927 and J1033 tolerance specifications for pilot bore size, pilot bore runout and mounting face flatness. Measure and record engine crankshaft end play (Fig. 1).
3. Install two 63,50 mm (2.50") long transmission to flywheel housing guide studs in the engine flywheel housing as shown. Rotate the engine flywheel to align a drive plate mounting screw hole with the flywheel housing access hole (Fig. 2).

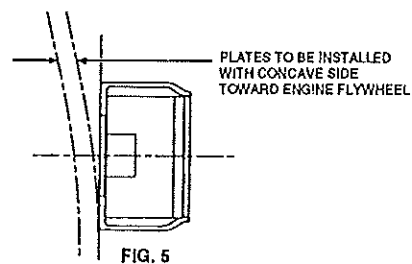
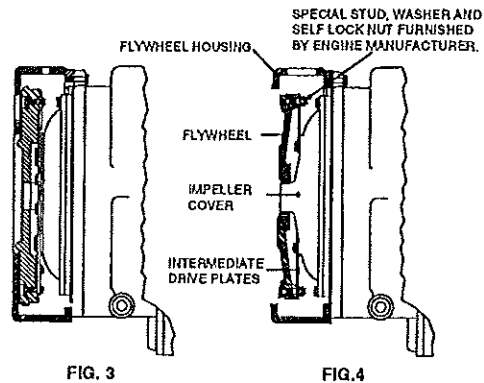


- *4. Install a 101,60 mm (4.00") long drive plate locating stud .3750-24 fine thread in a drive plate nut. Align the locating stud in the drive plate, with the flywheel drive plate mounting screw hole positioned in step No. 3.
5. Rotate the transmission torque converter to align the locating stud in the drive plate with the flywheel drive plate mounting screw hole positioned in step No. 3. Locate transmission on flywheel housing.



Aligning drive plate to flywheel and transmission to flywheel housing guide studs. Install transmission to flywheel housing screws. Tighten screws to specified torque. Remove transmission to engine guide studs. Install remaining screws and tighten to specified torque.

- *6. Remove drive plate locating stud.
7. Install drive plate attaching screw and washer. Snug screw but **do not tighten**. Some engine flywheel housings have a hole located on the flywheel housing circumference in line with the drive plate screw access hole. A screwdriver or pry bar used to hold the drive plate against the flywheel will facilitate installation of the drive plate screws. Rotate the engine flywheel and install the remaining seven (7) flywheel to drive plate attaching screws. Snug screws but **do not tighten**. After all eight (8) screws are installed. Torque each one 35 to 39 Nm. (26- 29ft.lbs.). This will require tightening each screw and rotating the engine flywheel until the full amount of eight (8) screws have been tightened to specified torque.
8. Measure engine crankshaft end play after transmission has been completely installed on engine flywheel. This value must be within 0,025 mm (0.001") of the end play recorded in step No. 2.



*Does not apply to units having 3 intermediate drive plates. See Fig.4.

Model: T20000

KIT-GASKET AND SEALING FOR LONG DROP

REF:4261495

QTY SHOWN IS TO MAKE ONE OF THE NEXT HIGHER ASSEMBLY

REV	P	PART NUMBER	QTY	S/E	PARTNAME AND APPLICATION
		4205090	1		GASKET-CONV HSG TO TRANS CASE
		4203422	3		O RING-SPEED SENSOR
		4205097	1		O RING-SUCTION TUBE ASSEMBLY
		4205101	1		GASKET-TRANS CASE TO REAR COVER
		60K40026	4		O RING
C		60K30018	3		O RING
		4205235	1		RING-PISTON
		250219	1		RING-PISTON
		4204710	1		SEAL-OIL BAFFLE
		241237	1		SEALING-RING
		60K30114	2		O RING
		237032	5		SEAL-CLUTCH PISTON - OUTER
		234113	5		SEAL-CLUTCH PISTON - INNER
B		4208098	7		PISTON-RING
		76K223	1		IDLER SHAFT O RING - REVERSE-
		60K30022	1		DISCONNECT HOUSING O RING
		60K40328	1		DISCONNECT HOUSING O RING
		60K30110	1		DISCONNECT BORE PLUG O-RING
		4205154	2		SEAL-OUTPUT SHAFT
		60K30016	1		DISCONNECT ACTUATOR PISTON O RING
		249158	1		DISCONNECT ACTUATOR RING-PISTON SEAL
		60K40124	1		DISCONNECT HSG O RING
		60K60116	2		OUTPUT FLANGE O RING
		60K40112	1		AIR SHIFT CYLINDER HOUSING O RING
		235283	1		PUMP ASSY TO CONVERTER GASKET
		247614	1		GASKET-CONTROL VALVE TO CONVERTER
		241150	1		SEAL-PISTON ROD HI/LO SHIFT CYLINDER

Ltr : C
Date: 05-APR-11
ECN : 11423200B1

Issued : sv

Rel : lt
Date: 21-MAY-99
ERN : SERVICE

Model: T20000

KIT-GASKET AND SEALING FOR LONG DROP

REF:4261495

QTY SHOWN IS TO MAKE ONE OF THE NEXT HIGHER ASSEMBLY

REV	P	PART NUMBER	QTY	S/E	PARTNAME AND APPLICATION
		241152	1		O RING-SEAL HI/LO SHIFT CYLINDER
		25K20012	1		O RING-SEAL HI/LO SHIFT CYLINDER
		241153	2		HI/LO SHIFT CYLINDERPISTON CUP SEAL
		60K30122	1		HI/LO SHIFT CYLINDER CAP O RING
		247616	1		GASKET-CONTROL VALVE COVER
		76K000008000	4		CONTROL VALVE CARTRIDGE O RING
		76K12	4		CONTROL VALVE CARTRIDGE O RING
		76K13	4		CONTROL VALVE CARTRIDGE O RING
		76K20	8		CONTROL VALVE SOLENOID &SOLENOID NUT O RING
		91F7	1		O RING - PLUG
		91F6	3		O RING - PLUG
		91F5	7		O RING - PLUG
		250215	1		LOW SHAFT RING-PISTON
C		232640	1		GASKET
C		243915	1		GASKET-PUMP ADAPTOR
C		245699	1		GASKET
C		4206098	1		GASKET-ADAPTER PLATE
C		239892	1		SEAL-OIL
C		91F4	1		O-RING
C		60K40420	1		O-RING
C		4211196	1		GASKET
C		4210660	4		O-RING
C		4210661	4		O-RING
C		4210662	4		O-RING
C		4210663	4		O-RING
C		234922	1		GASKET-OUTPUT BEARING CAP
C		247615	1		GASKET-MODULATION VALVE TO CONV. HSG.

Ltr : C
Date: 05-APR-11
ECN : 11423200B1

Issued : sv

Rel : lt
Date: 21-MAY-99
ERN : SERVICE



Part Stocking Recommendation

The table below is a minimum spare parts inventory recommendation designated by letter code in each Service Parts List. Each letter code indicates a percentage for determining stock quantities to support the field population. Any quantity less than 1 or partial quantities need not be stocked.

Letter Code	Percentage	Example
A	15%	Part quantity = 10 per unit Field Population = 240 units Recommended stock = 240 units x 10 per unit x .15 = 360 parts
B	10%	Part quantity = 4 per unit Field Population = 66 units Recommended stock = 66 units x 4 per unit x .10 = 26.4 or 26 parts
C	6%	Part quantity = 2 per unit Field Population = 203 units Recommended stock = 203 units x 2 per unit x .06 = 24.4 or 24 parts
D	4%	Part quantity = AR* Field Population = 42 units Recommended stock = 42 units x 3 per unit x .04 = 5.04 or 5 parts
E	2%	Part quantity = 1 per unit Field Population = 75 units Recommended stock = 75 units x 1 per unit x .02 = 1.5 or 1 part
*Part quantities denoted by "AR" (as required) should be ordered by a quantity of 3 per unit.		

© Copyright 2012 Dana Holding Corporation

All content is subject to copyright by Dana and may not be reproduced in whole or in part by any means, electronic or otherwise, without prior written approval.

THIS INFORMATION IS NOT INTENDED FOR SALE OR RESALE, AND THIS NOTICE MUST REMAIN ON ALL COPIES.

For product inquiries or support,
visit www.dana.com or call 419-887-6445

For other service publications,
visit www.SpicerParts.com/literature.asp

For online service parts ordering,
visit www.SpicerParts.com/order.asp



SPICER[®]

Off-Highway Products